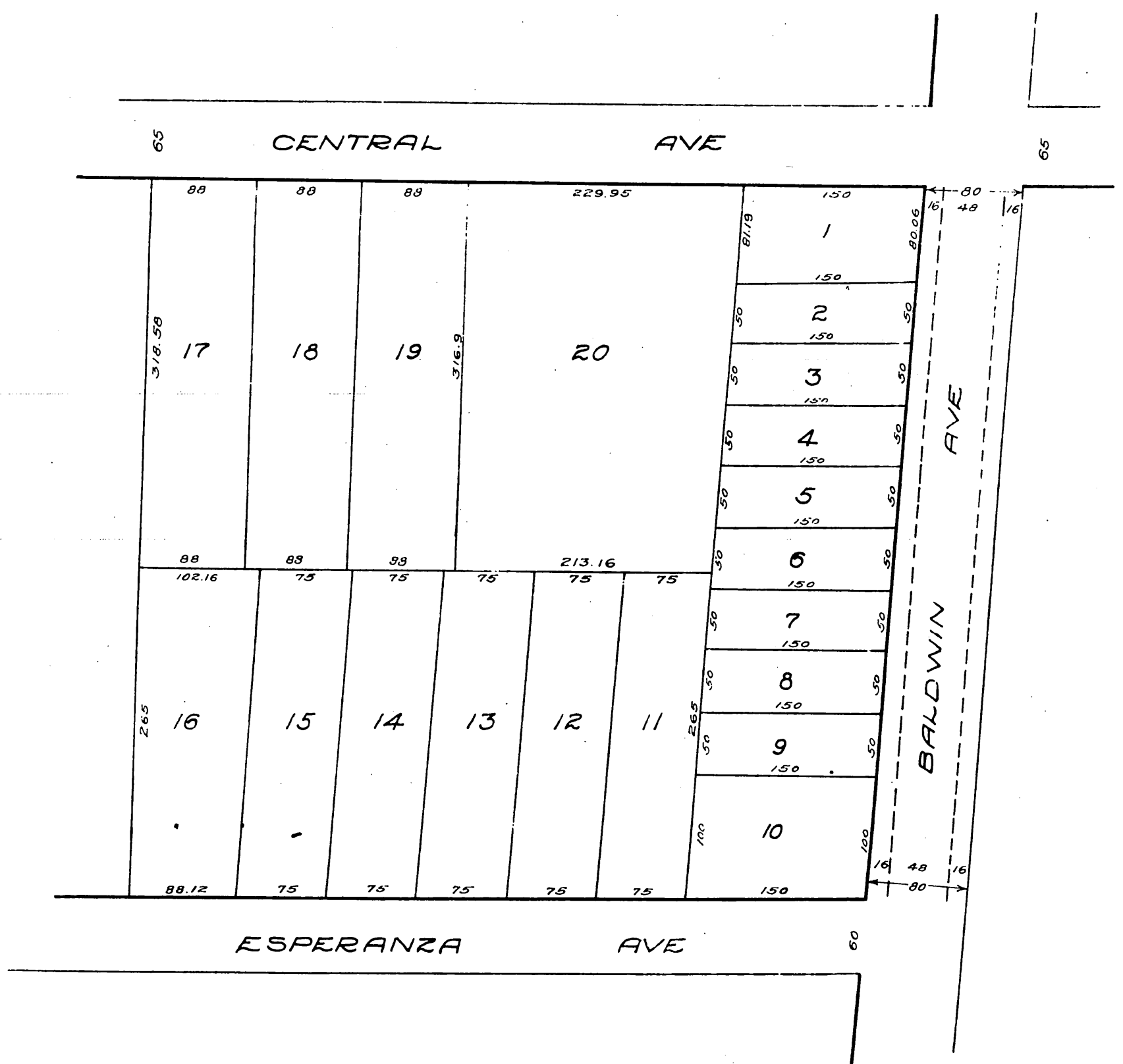


Map
 of the
N.H. Hosmer Subdivision.
 of
 Block "X" of the Hosmer Sub. of Sierra Madre Tract
 Sierra Madre, Los Angeles Co. Cal.
 Surveyed Dec. 1886 by J.M. Willard C.E.
 Scale 100 ft. to 1 inch.



A full true and correct copy of the original recorded
 December 21st 1886, at 10 A.M. at request of N.H. Hosmer:
 Frank A. Gibsori, County Recorder.
 By Geo. Bugbee Deputy.