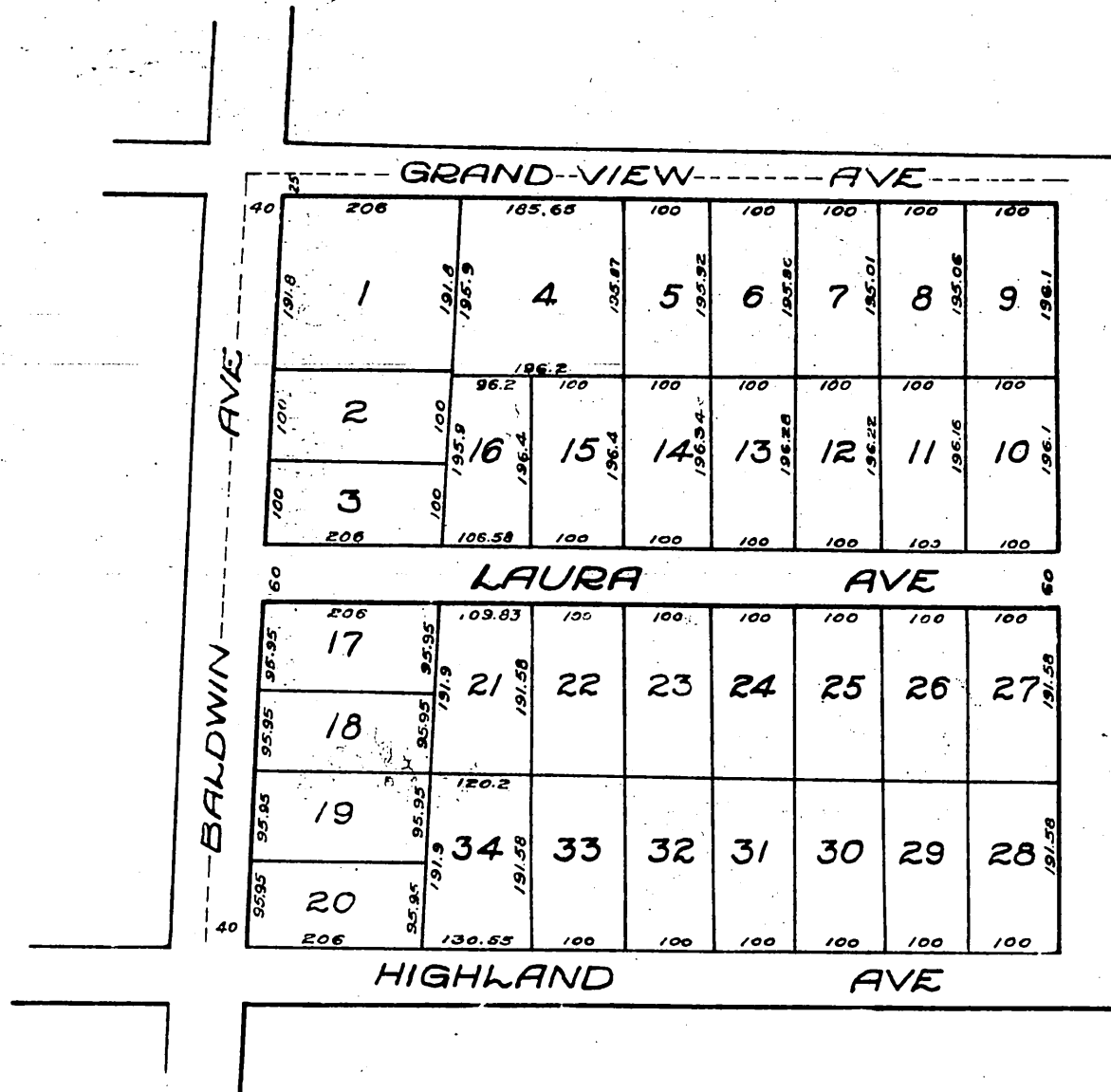


Map
of
Hawk's Addition
to
Sierra Madre

A subdivision of northwest portion of Lot 13, of the
Sierra Madre Tract, Sierra Madre, Cal.

Surveyed July 1886, by J.M. Willard, C.E.

Scale 100 ft = 1 inch.



A full true and correct copy of the original (reduced to scale of
200 ft. to 1 inch) recorded 21st December, 1886, at request of
C.W. Clement
Frank A. Gibson, County Recorder.
By Geo. Bugbee, Deputy.