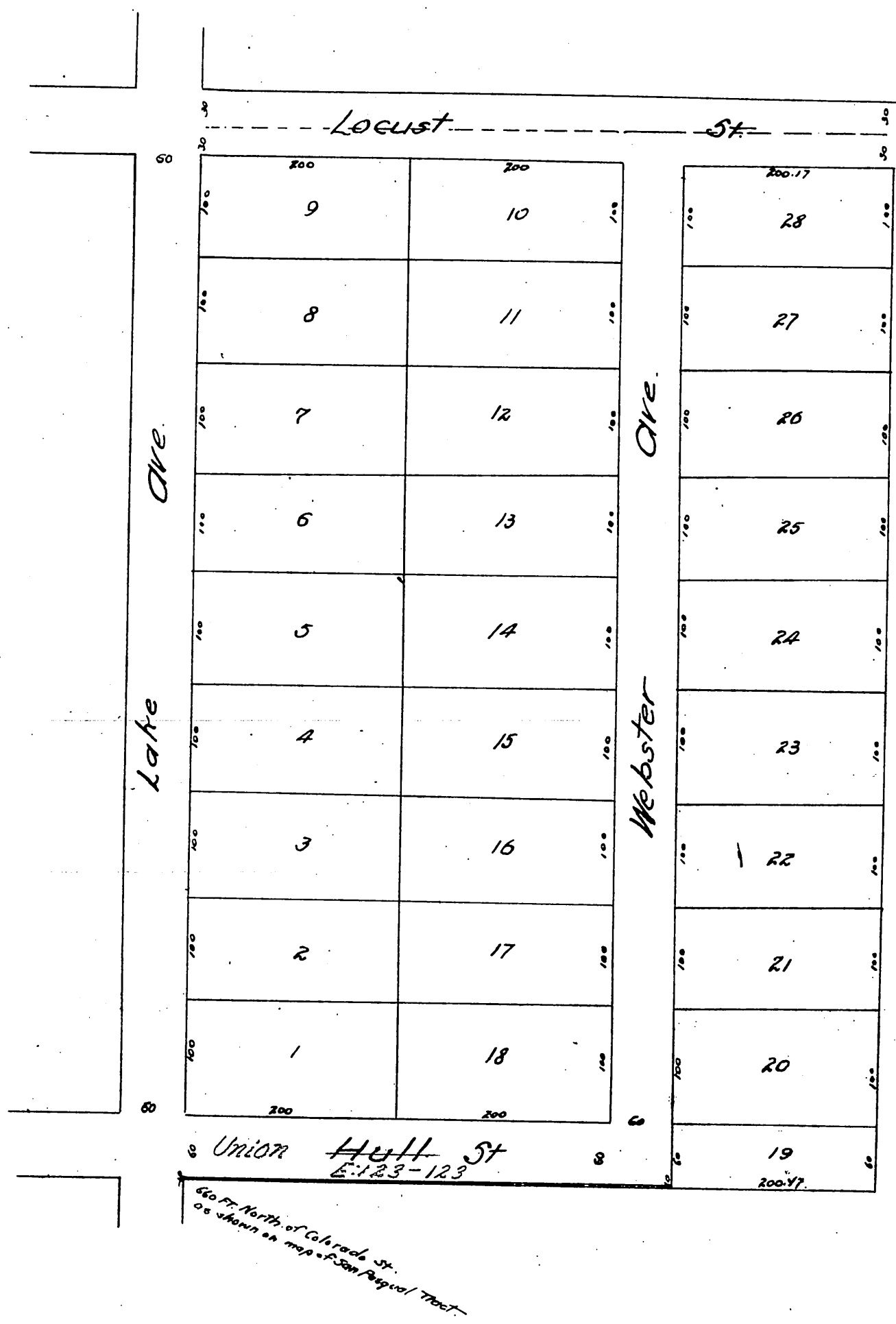


Map  
OF THE  
Brown & Newton Subdivision  
of Lots 34, 35, 36, 37 & 38  
of the lands of the  
Mutual Orchard Company.  
San Pasqual Tract, Pasadena, Cal.  
Surveyed Aug 1886 by J.M. Willard, C.E.  
Scale 60 ft. 1 inch.



A full true and correct copy of the original (reduced to scale of 120 ft. to 1 in ch) recorded December 22<sup>nd</sup> 1886 at 52 Min. past 9 A.M. at request of C.C. Brown.  
 Frank H. Gibson, County Recorder.  
 By Geo. Bugbee, Deputy.