

Map OF THE

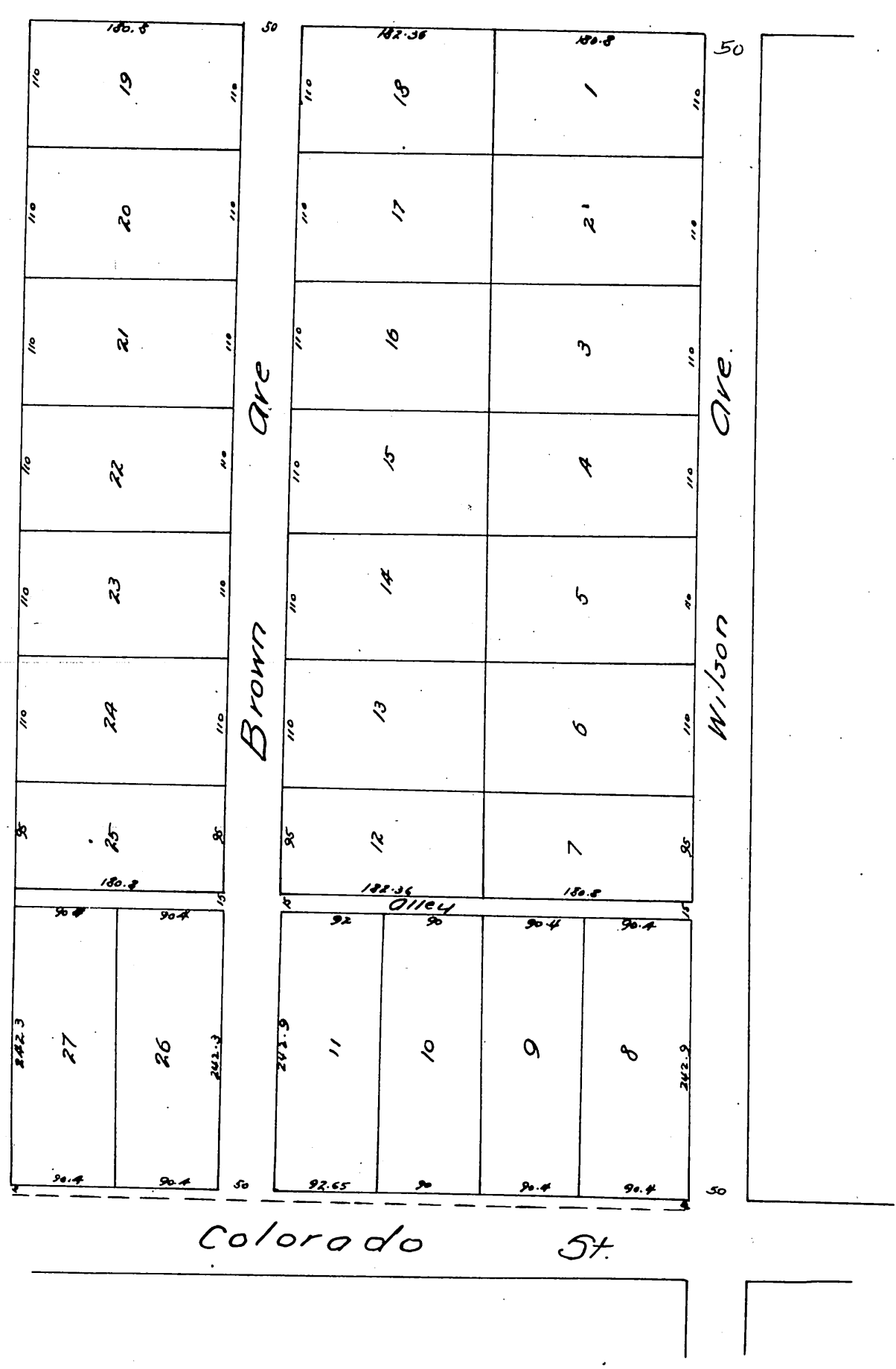
Hull Tract

A Subdivision of lots 25, 26, 27, 28 & 29
of the lands of the

Mutual Orchard Company

of the San Pasqual Tract of the lands of the Lake Vineyard Land & Water Association,
Pasadena Cal.

Surveyed Aug 1886 by J.M. Willard, C.E.
Scale 60 ft 1 inch.



A full true and correct copy of the original (reduced
to scale of 120 feet to inch) recorded December 22nd 1886
at 9:53 AM at request of B.J. Hull
Frank A. Gibson County Recorder.
By Geo. Bagbee. Deputy.