

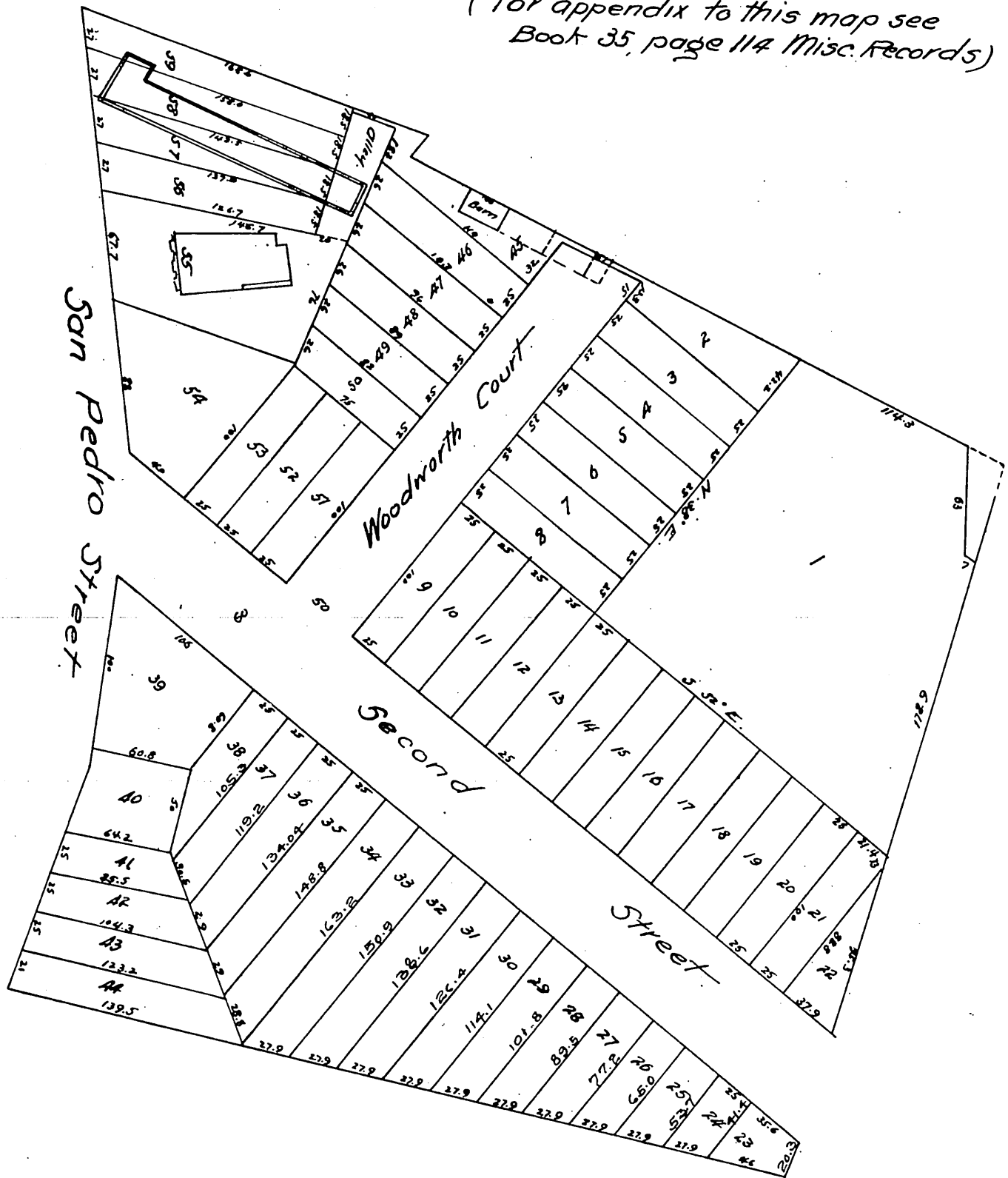
Map or Woodworth Tract

as subdivided by Burr Bassell C.E. at request of M. L. Wicks.
Dec. 1886.

Scale 40 feet inch.

M. L. Wicks

(For appendix to this map see
Book 35, page 114 Misc. Records)



A full true and correct copy of the original (reduced
to scale of 40 feet to one inch) recorded 22nd December 1886
at 11³⁰ a. m. at request of M. L. Wicks.

Frank A. Gibson, County Recorder
By Geo Bugbee, Deputy.