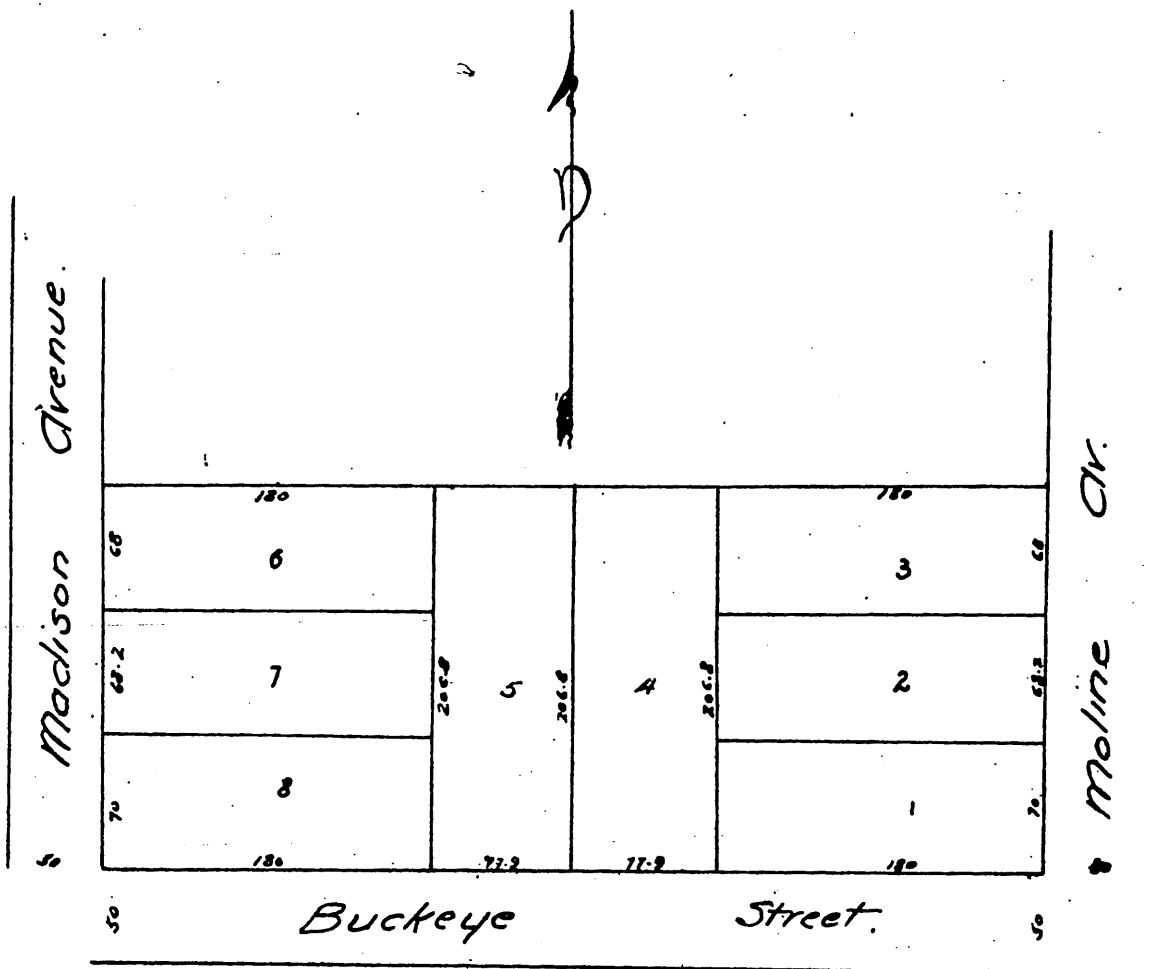


Lewis & Newsom's Subdivision

of
Three acre parcel described in Deed Chas. S. Howard
and wife to H. C. Lewis & R. J. Newsom recorded Dec. 1886.
Riggins & Jessup, Surveyors.
Scale 60 to 1 in.



(Full true and correct copy of the original (reduced to
scale of 100 feet to 1 inch) recorded December, 23rd 1886
at 9⁴² A. M. at request of H. C. Lewis.

Frank A. Gibson, County Recorder.
By Leo Bugbel, Deputy.