

Map OF THE

Malabar Tract

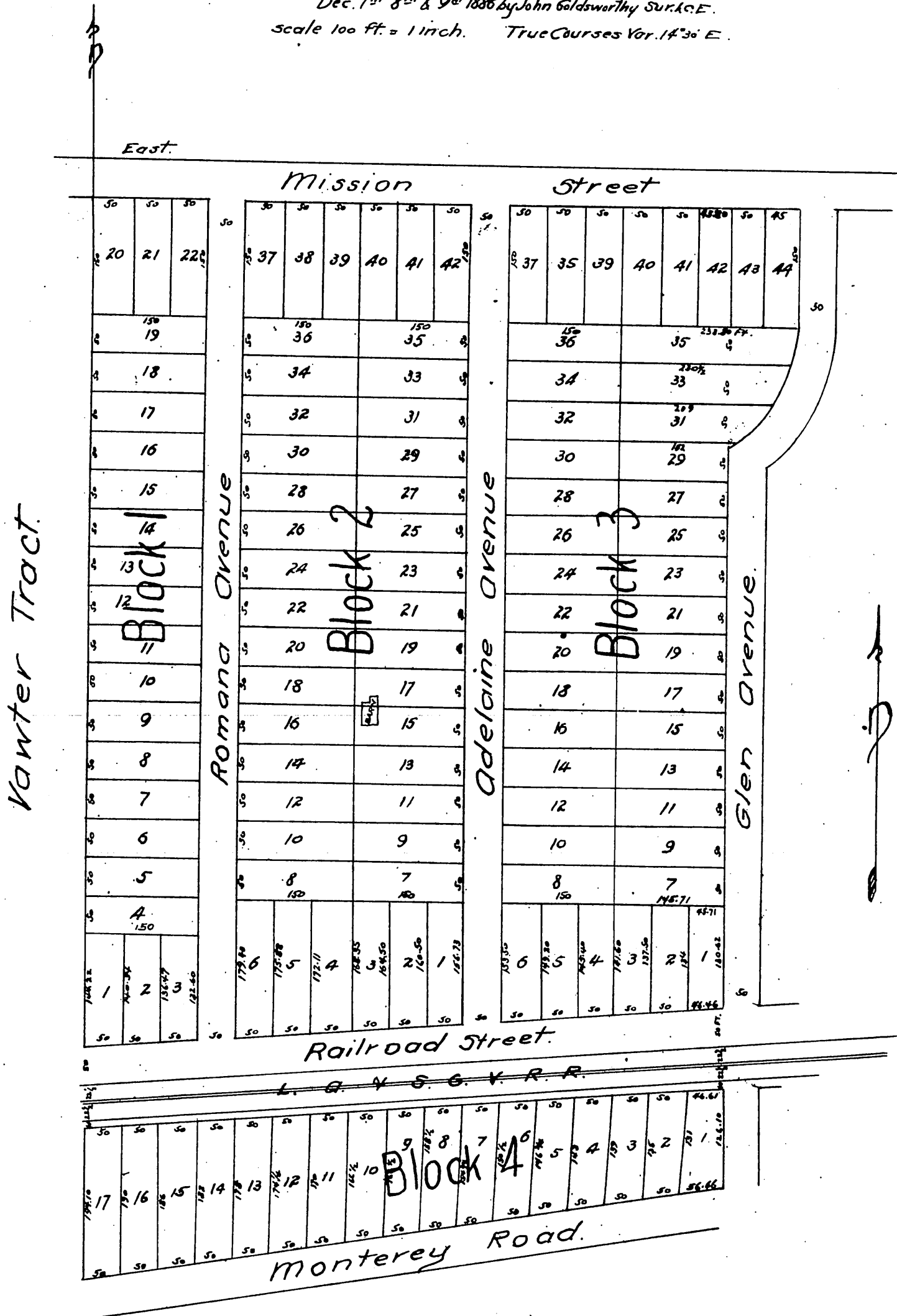
in South Pasadena Los Angeles Co. Cal.

being part of the Leavett Tract

subdivided at request of Geo. Boehme, E. Q. Cox, and C Brandt

Dec. 7th 8th & 9th 1886 by John Goldsworthy Sur. & C. E.

scale 100 ft. = 1 inch. True Courses Var. 14° 30' E.



A full, true and correct copy of the original
(reduced to the scale of 150 feet to one inch)
recorded December 23, 1886 at 15 min. past 2
P. M. at request of Russell, Cox & Brandt.
Frank A. Gibson. County Recorder.
By Geo. Bugbee. Deputy.