

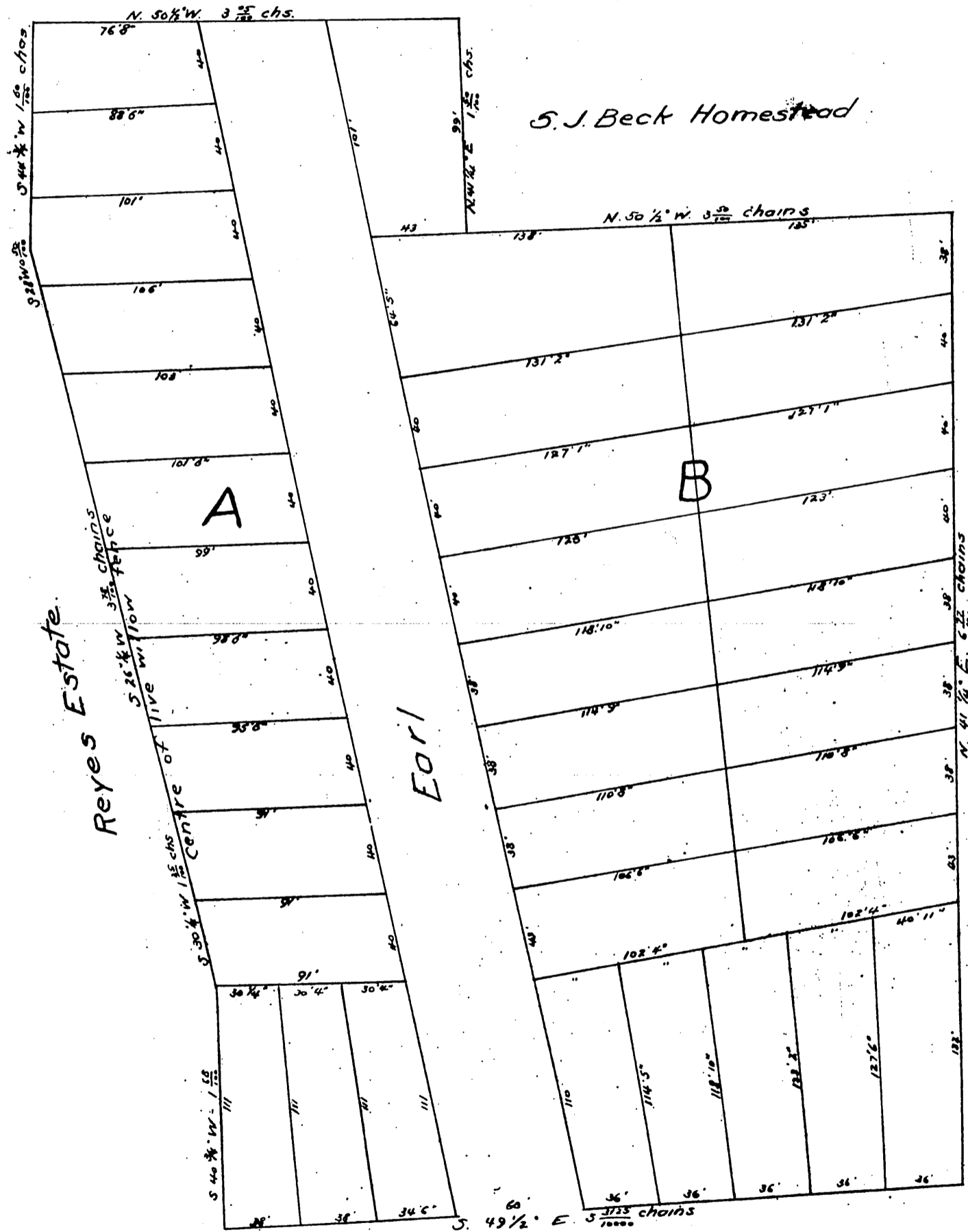
Beck Tract

Being that portion of the S.J. Beck property lying Northeast of Seventh St.

scale 50 ft. to 1 inch.

Surveyed by Gervaise Purcell C.E.

A. M. Bullis



Seventh Street

San Pedro Street

A full, true, and correct copy of the original (reduced to the scale of 50 feet to one inch) recorded December 23 1886 at A. P. 117 at request of H. H. Dixby.

Frank A. Gibson County Recorder
D. L. Burdell Deputy