

# THE PALMS

## HARRISON, CURTIS & SWEETSER'S SUBDIVISION

OF A PART OF THE

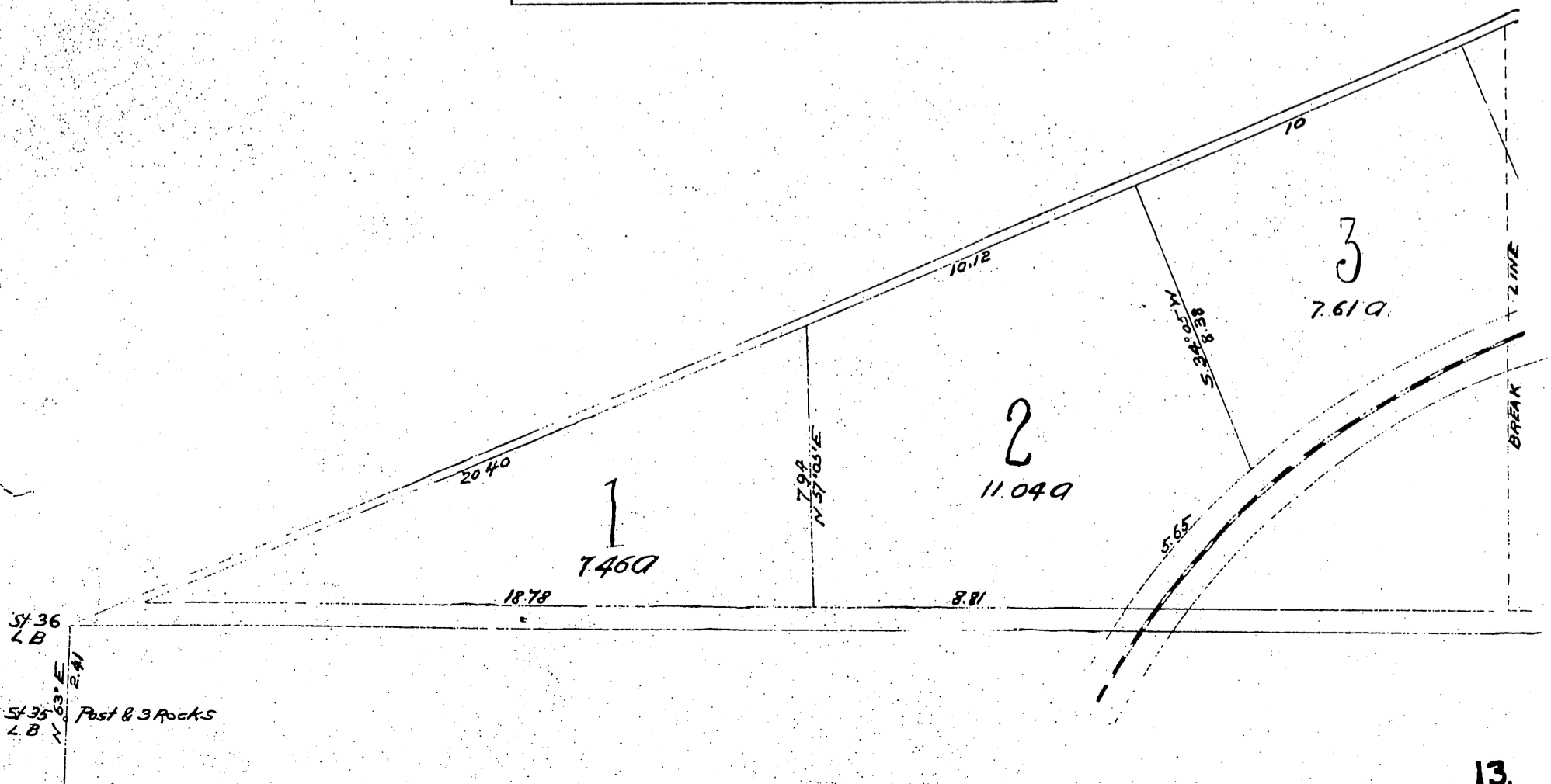
## LA BALLONA RANCHO

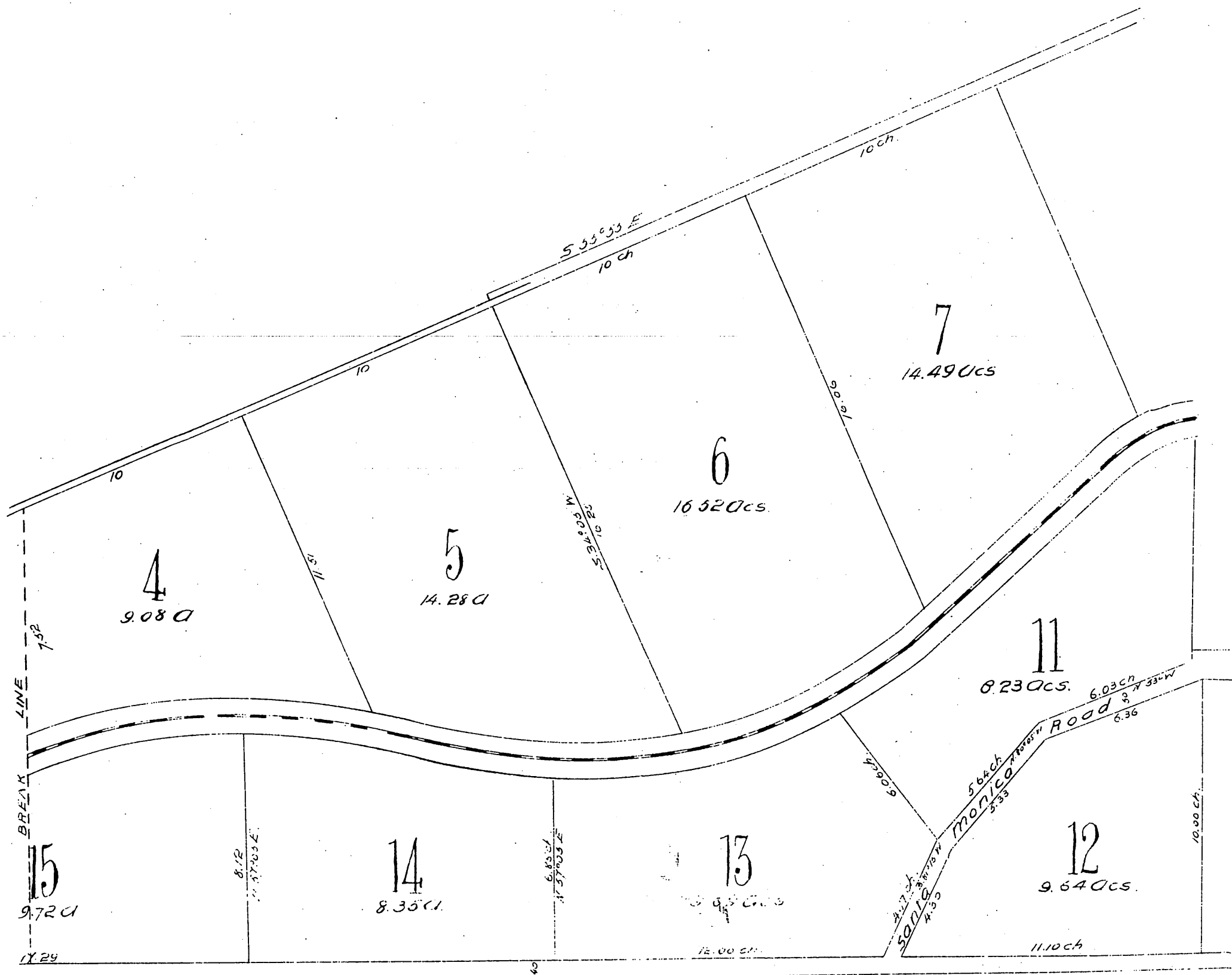
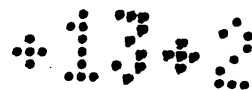
*Being part of the allotment to Macedonio Aguilar  
as per partition map of said Ranch*

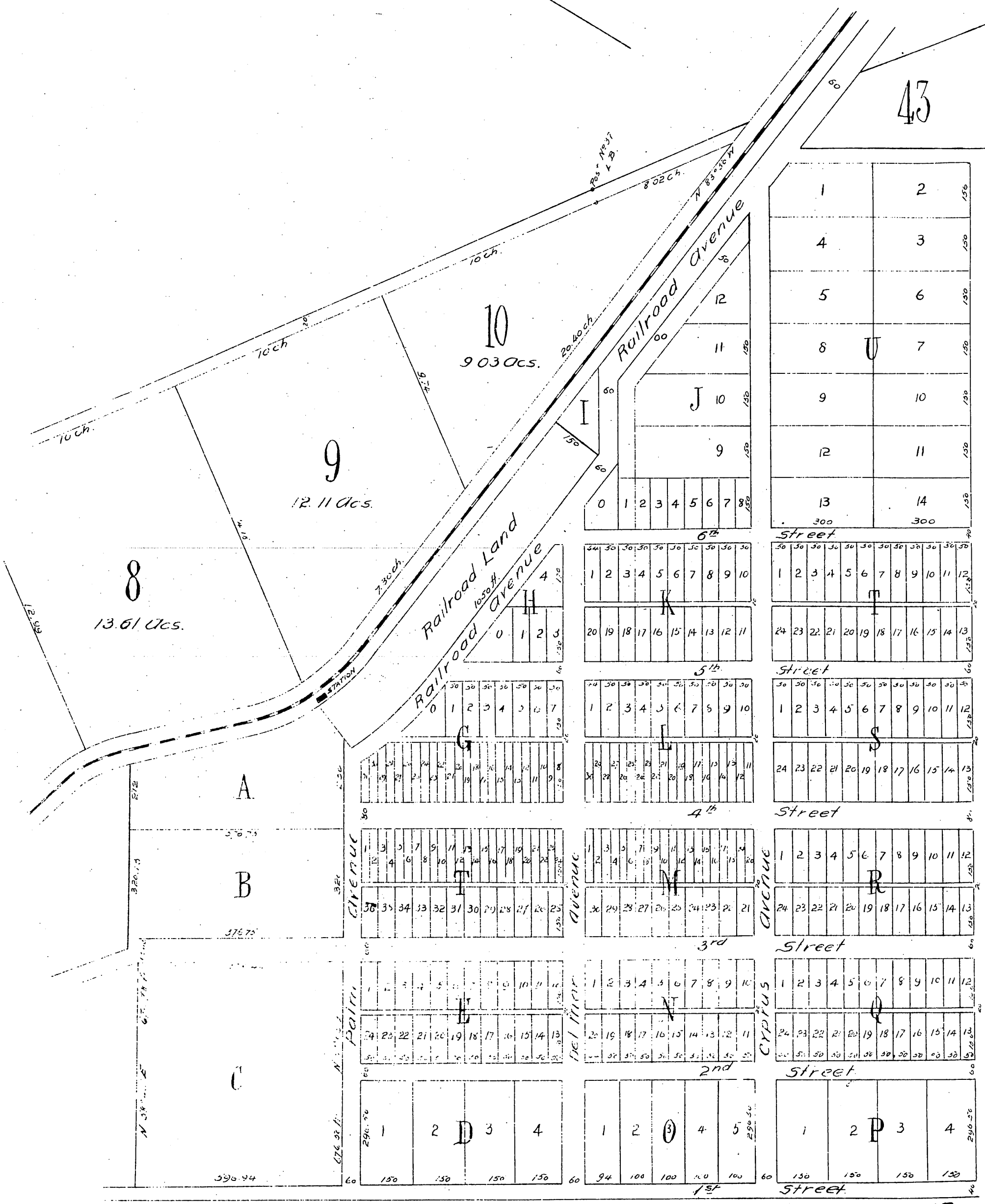
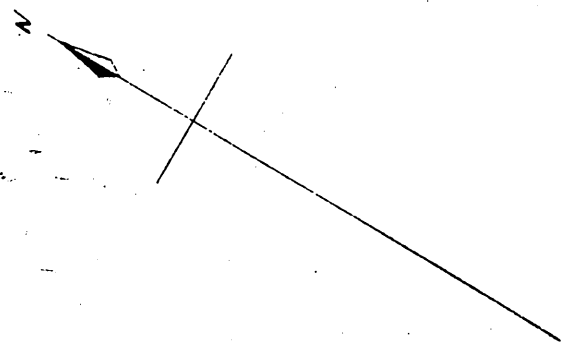
### LOS ANGELES CO CAL

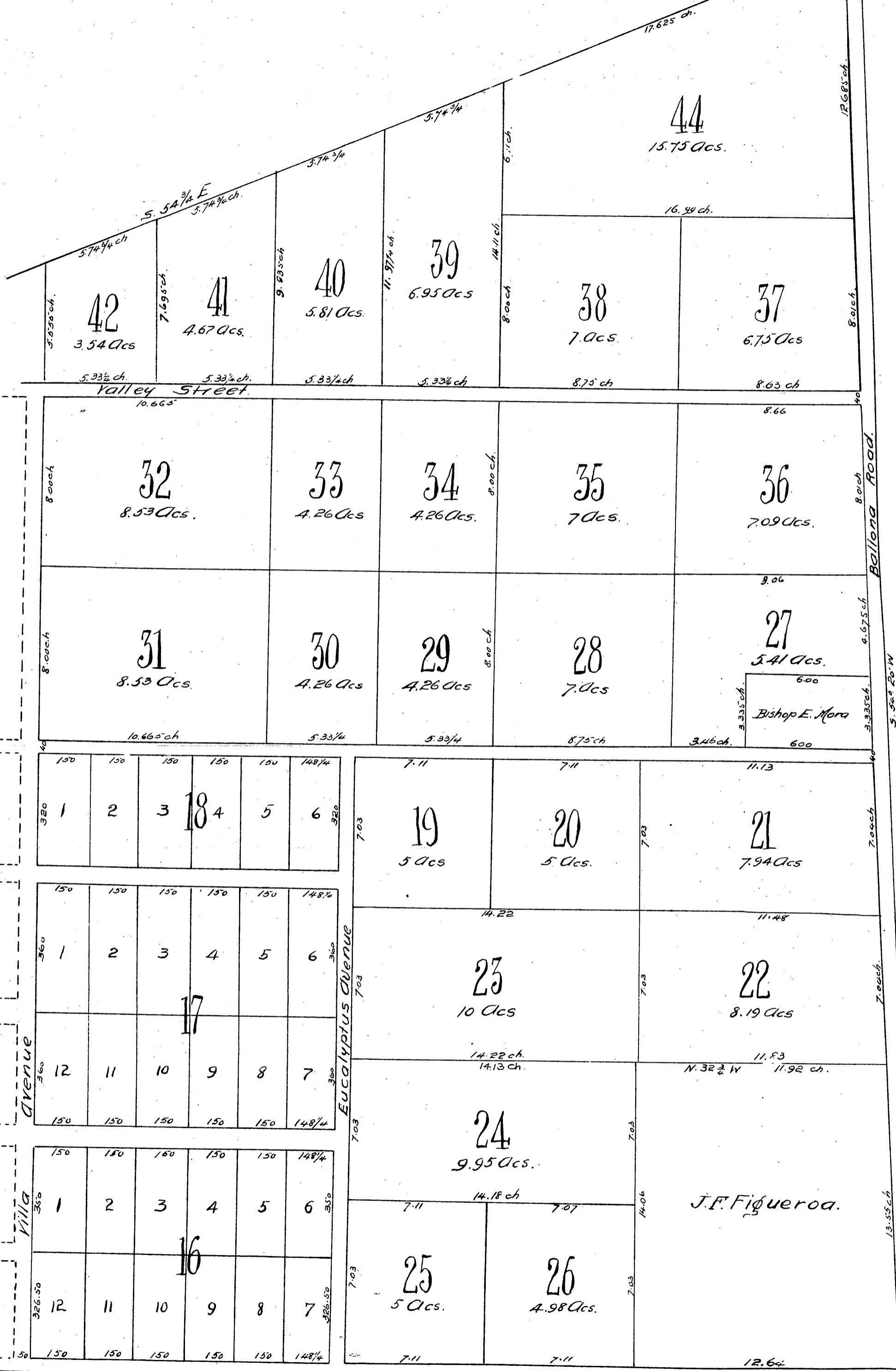
*Surveyed Nov 1886  
E. T. Wright County Surveyor.*

*Scale 4 chains to 1 inch.  
Acre Tracts distances marked in chains  
Streets and Town Lots marked in feet*









A full, true and correct copy of the original recorded December 24 1886  
 at 11 min. past 3 P.M. at request of Curtis and Sweetser.

Frank A. Johnson County Recorder  
 by Geo. Pughree Deputy.