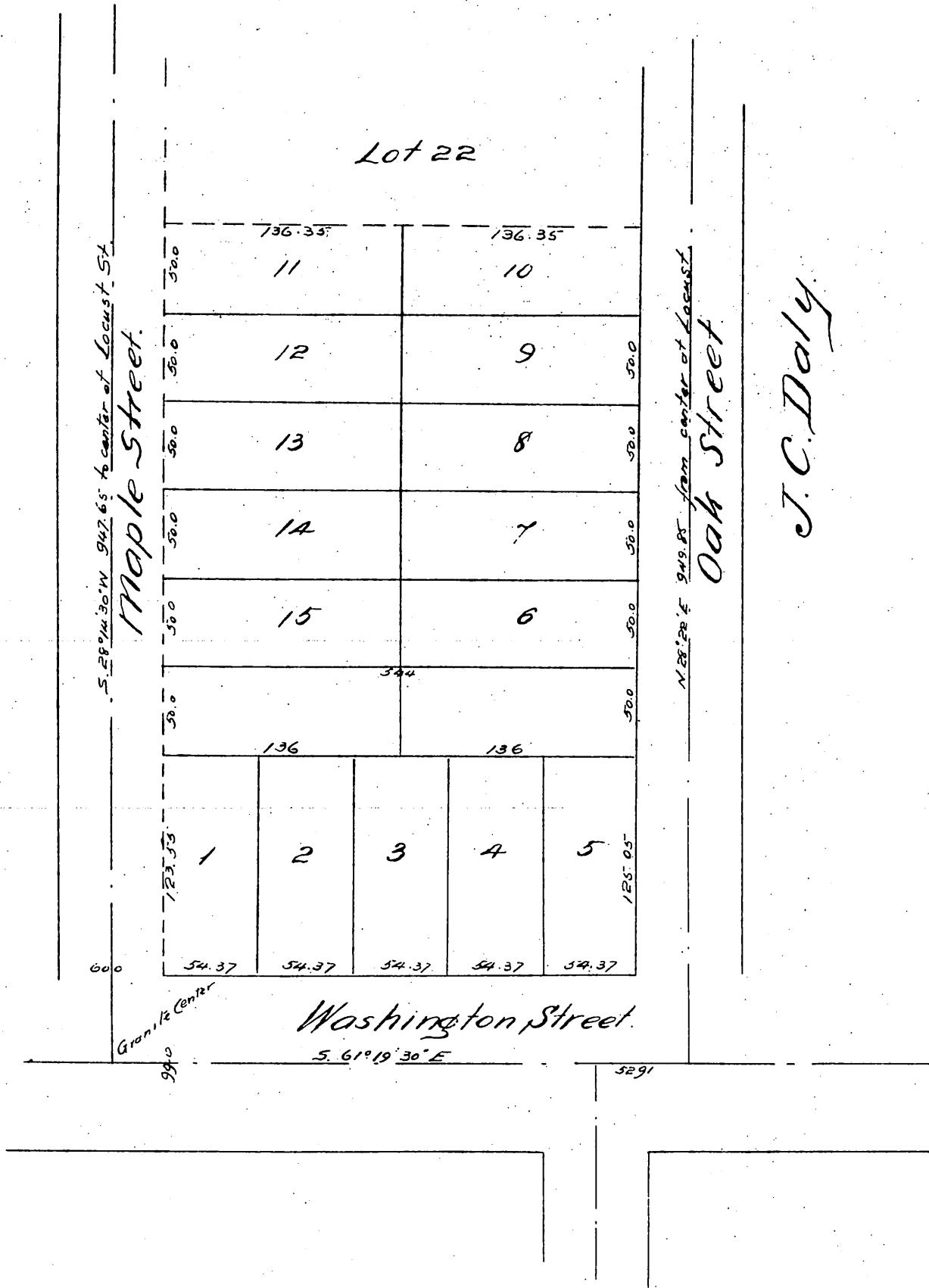


# MAP of the Hogan Tract.



J. C. Daly

A full true and correct copy of the original (reduced to scale of 80 feet to 1 inch) recorded December 27<sup>th</sup> 1886 at 2<sup>1</sup>/<sub>2</sub> P.M. at request of John F. Hogan.  
 Frank A. Gibson County Recorder.  
 by Geo. Bagbee Deputy.