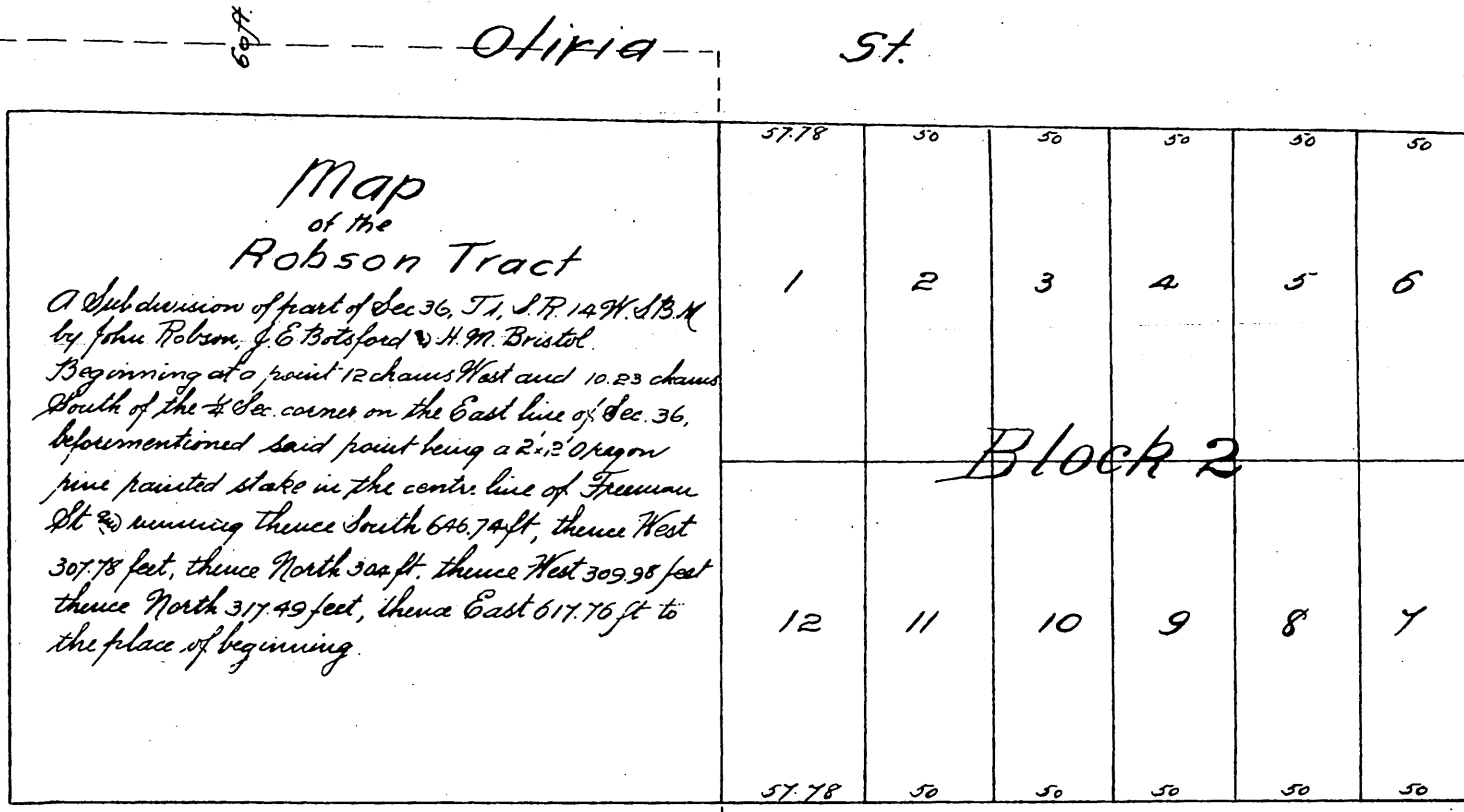
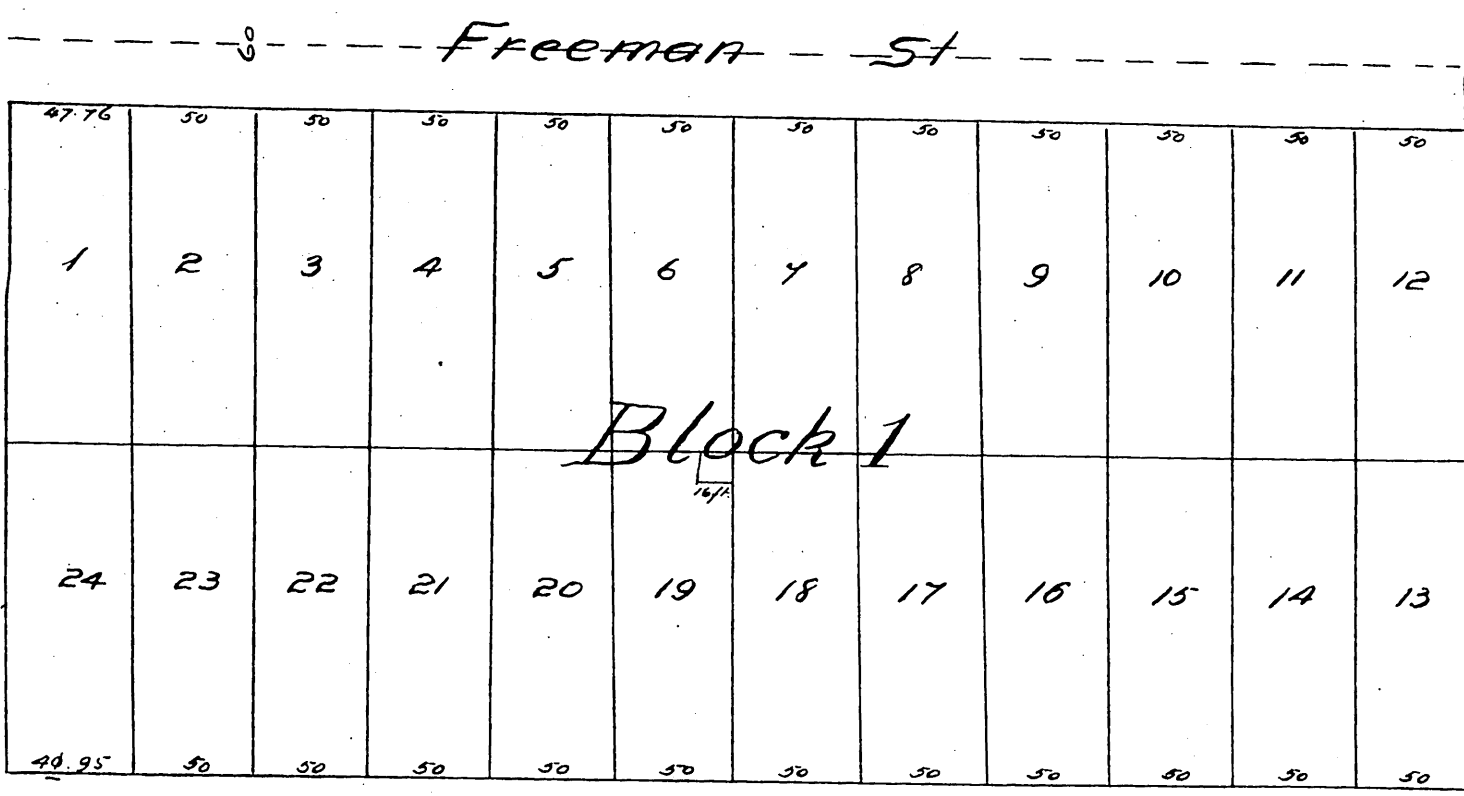




Plat of the Robson Tract.

Budlong Ave



40 ft

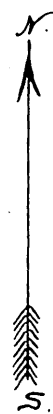
40 ft

Cypress Ave

Map
of the
Robson Tract

A Subdivision of part of Sec 36, T1, S.P. 14 N. R. 13 W.
by John Robson, J. G. Botsford & H. M. Bristol.

Beginning at a point 12 chains West and 10.23 chains
South of the 1/4 Sec. corner on the East line of Sec. 36,
beforementioned said point being a 2x2 Oregon
pine painted stake in the center line of Freeman
St. & running thence South 646.74 ft, thence West
307.78 feet, thence North 500 ft, thence West 309.98 feet
thence North 317.49 feet, thence East 617.76 ft to
the place of beginning.



A full true and correct copy of the original recorded
December 29th 1886 at 11 AM. at request of John Robson.
Frank A. Gibson. County Recorder.
By Geo. Bugbee. Deputy.