

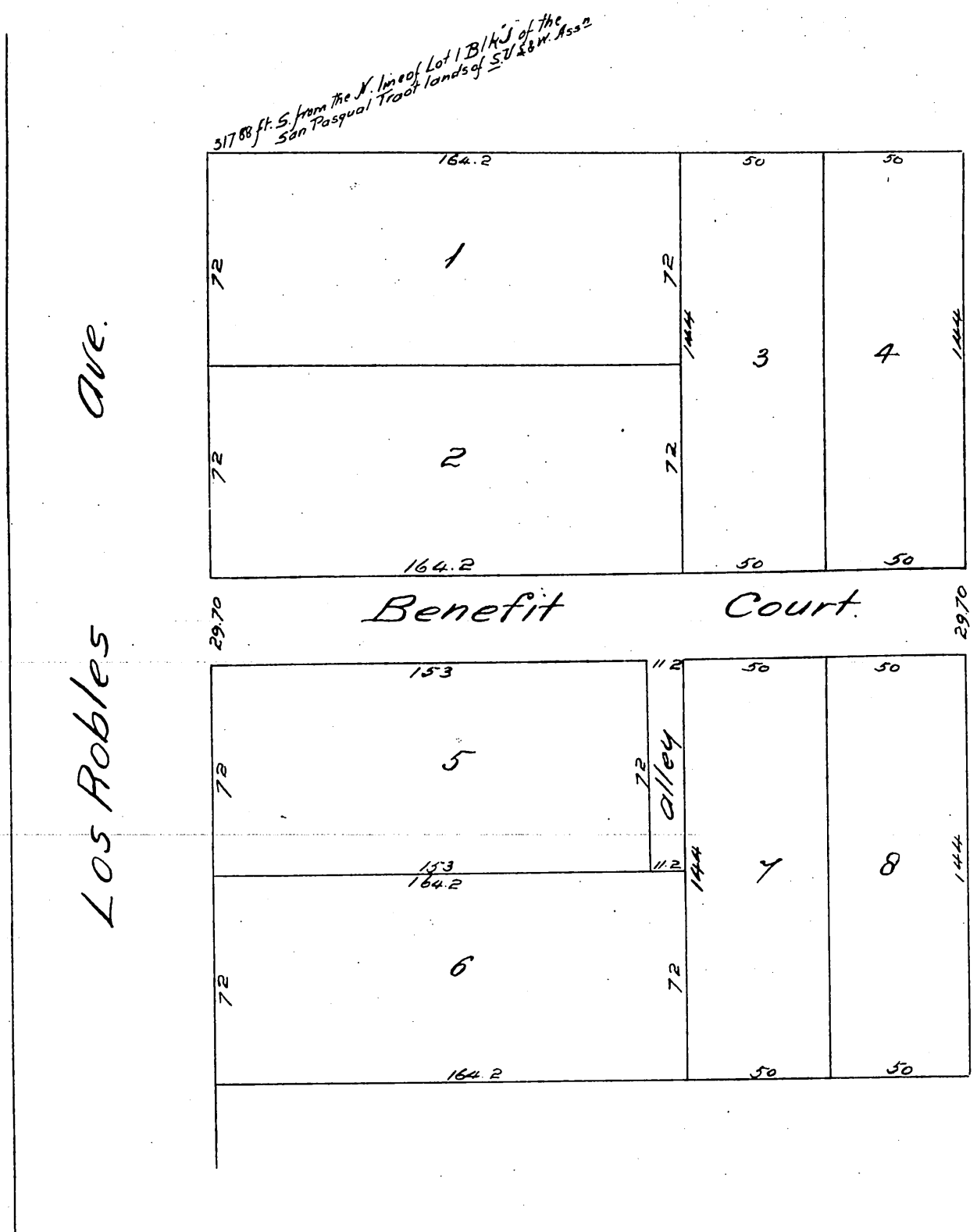
# Map Wallace Bros. & Keyes's Subdivision

Being a portion of Lot # Block J San Pasqual Tract  
of the lands of the Lake View and Land & Water Association.

Pasadena, Los Angeles Co. Cal.

Surveyed Dec. 1886 by J. M. Willard, C. E.

Scale 50 feet to one inch.



A full true and correct copy of the original recorded  
December 30, 1886 at 10 A. M. at request of Wallace Bros  
Frank A. Gibson, County Recorder.  
By Geo. Bugbee, Deputy.