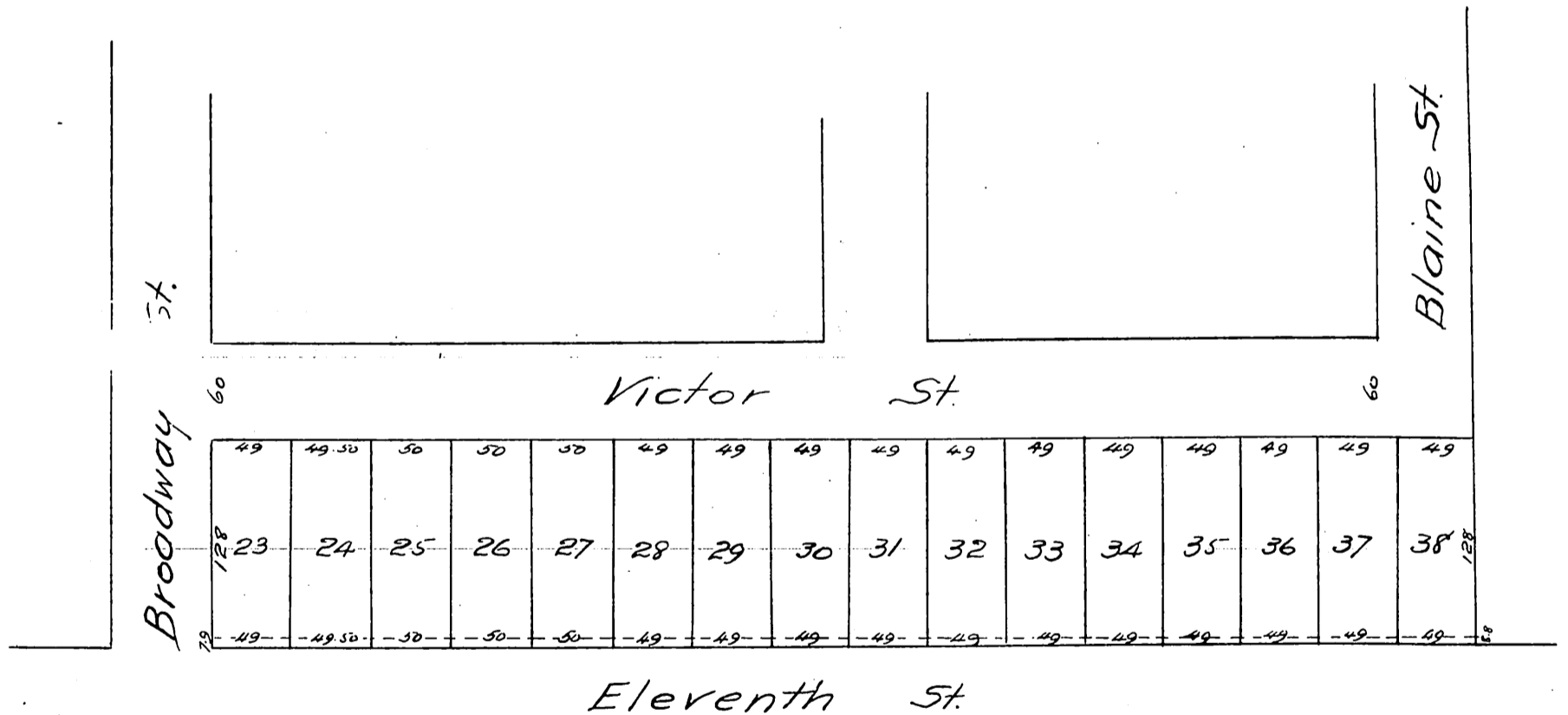


The Eleventh St. Block

Being a resubdivision of a portion of the Dunkelberger Tract (being a part of lots 1 & 2 Block 36 of Hancock's Survey) as recorded in a map of said Dunkelberger Tract in Book 6 of Miscellaneous Records at page 60 also including a fractional strip of land 8 feet (more or less) in width as shown on a map of the City Centre Tract which said map is recorded in Book 13 of Miscellaneous Records at Page 11.



a full, true and correct copy of the original
(reduced to the scale of 150 feet to one inch)
recorded December 31, 1886 at 59 min. past 11 A.M.
at request of Southern Cal. Land Co
Frank A. Gilson, County Recorder.
By George Kugler Deputy.