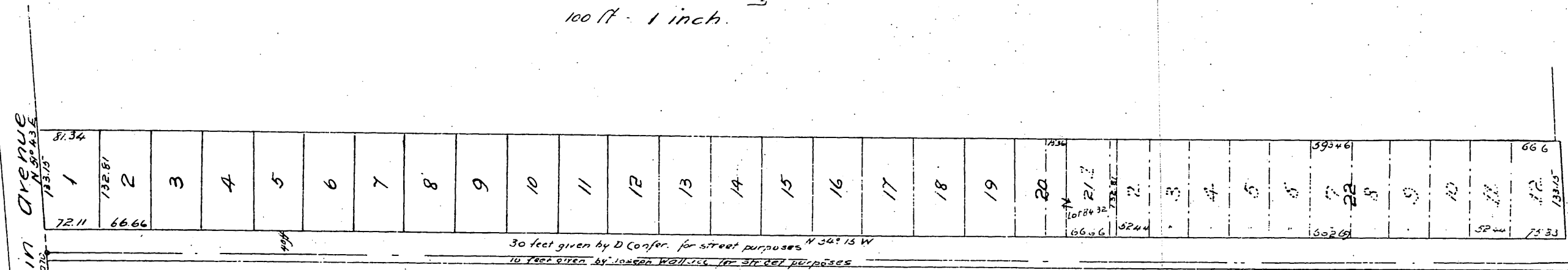


Plat of
D. Confer's Subdivision
Pasadena, Cal.

Willie H. Thomson Sur. Aug. 1886
100 ft. = 1 inch.

Plat
of the
Beach Peach Orchard
Being a subdivision of Lots 20, 21 & 22 Confer's
Subdivision. Subdivision lines in Red ink.



Mountain Avenue
30 FEET TO FAIR OAKS AVE

A full, true and correct copy of the original
(reduced to the scale of 150 feet to one inch)
recorded Dec. 31, 1886 at 10 min. past 4. P. M.
at request of W. W. Beach
Frank A. Gilem County Recorder.
By Geo. Bugbee Deputy.

13