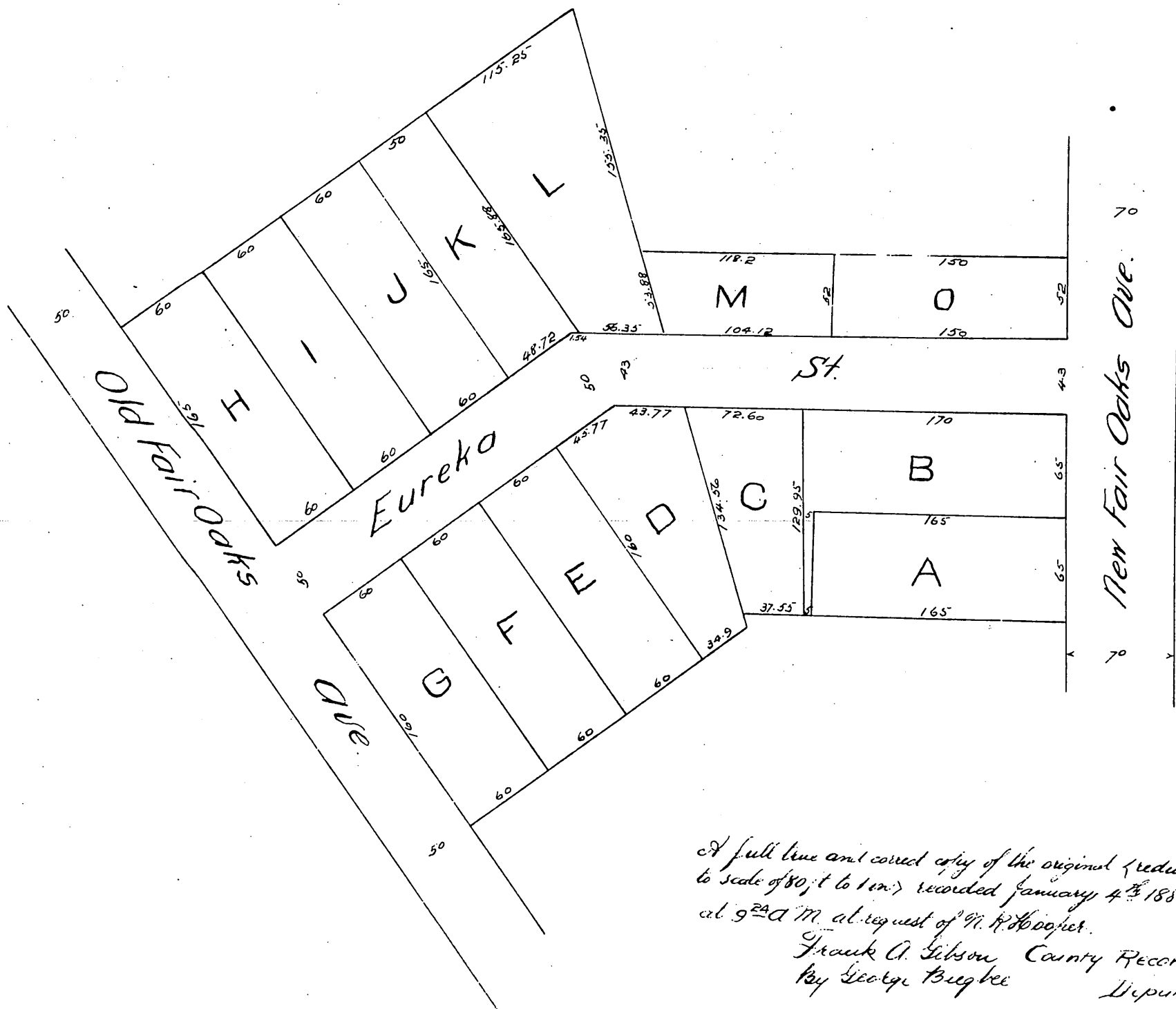


4317

Map
of the
Hooper Subdivision
of Lots 11, 12, 13, 27, 28, 29, 30, 31 Block E of the New Fair Oaks Ave. Grad.
PASADENA, LOS ANGELES CO. CAL.
Surveyed Dec. 1886 by J.M. Willard, C.E.
Scale 60ft to one inch.



A full true and correct copy of the original (reduced to scale of 80 ft to 1 in.) recorded January 4th 1887 at 9th A.M. at request of W. H. Hooper.
Frank A. Gibson County Recorder.
by George Bugbee Deputy.