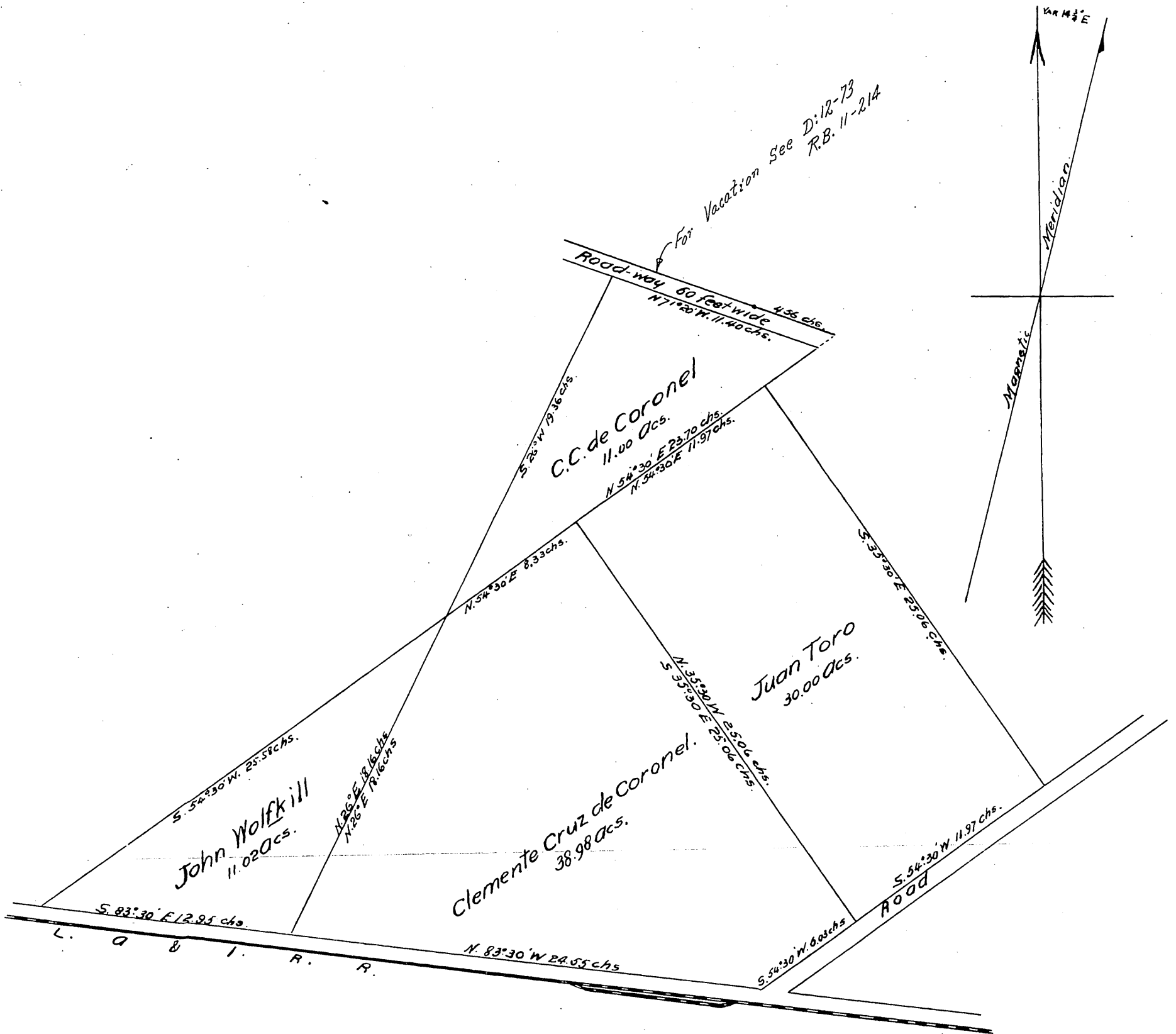


Map
 of a part of
 Rancho Rincon de los Bueyes
 PROPERTY OF
 Clemente O. de Coronel

Surveyed by John N. Wildy March 1885
 Scale 3 chains to 1 inch.



A full, true and correct copy of the original
 (reduced to the scale of 6 chs. to one inch) recorded
 January 4, 1887 at 16 min. past 12 M. at request of
 M. V. Biscalviz.

Frank A. Siskin County Recorder.
 by Geo. Bugbee. Deputy.