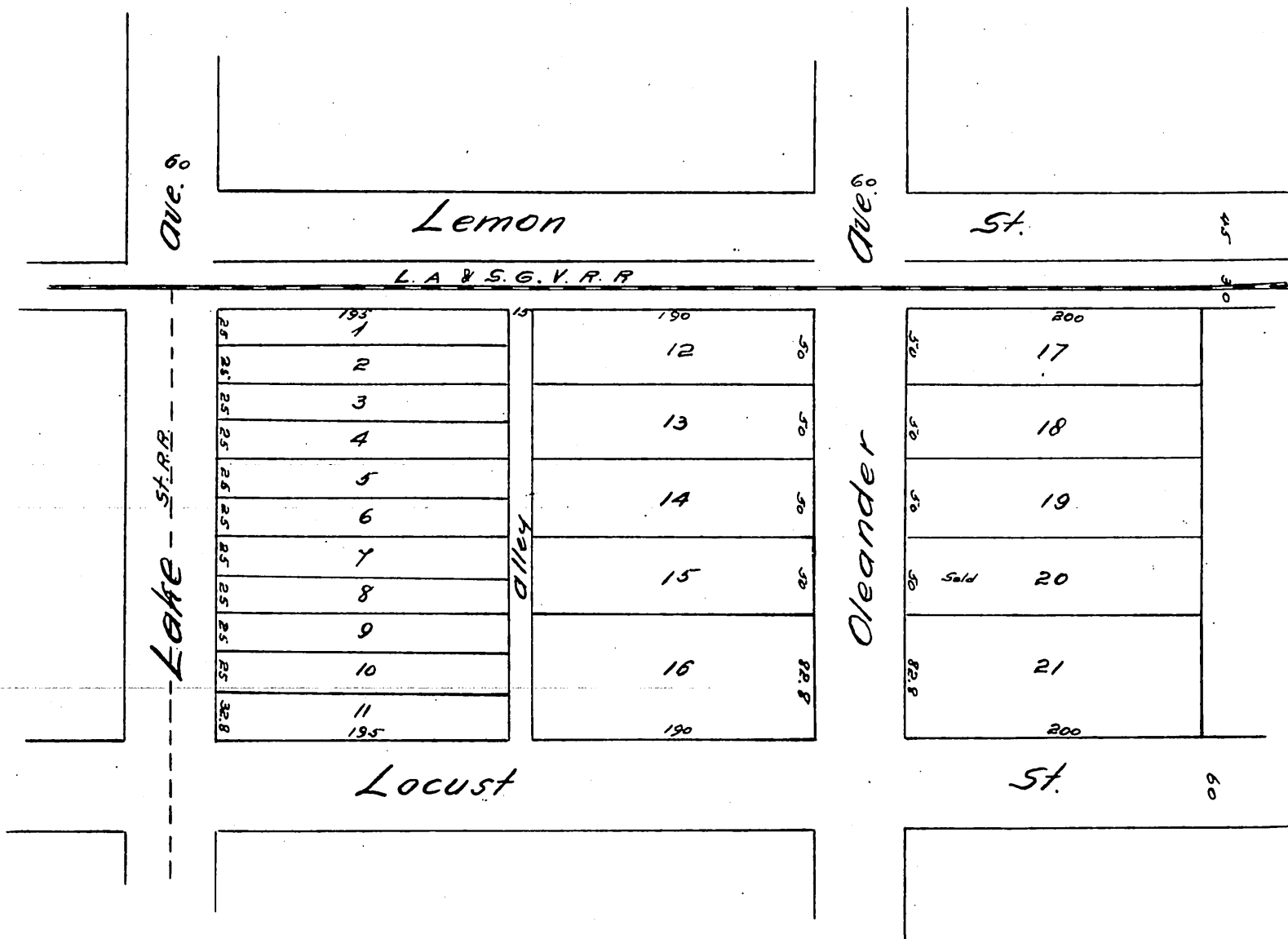


1321

Map
of
Arnold & Mills Co's
Olivewood Subdivision
OF
Lots 1, 2, 3 & 4 Block 8 in Olivewood, Pasadena.
Los Angeles Co, Cal.
Surveyed Dec. 1886 by T.D. Allin.
Scale 50ft. to the inch.



A full true and correct copy of the original (reduced to scale of 100ft. to one inch) recorded January 6th 1887 at 11⁵² a.m. at request of Arnold & Mills Co.
Frank A. Gibson County Recorder.
by Geo. Bugbee Deputy.