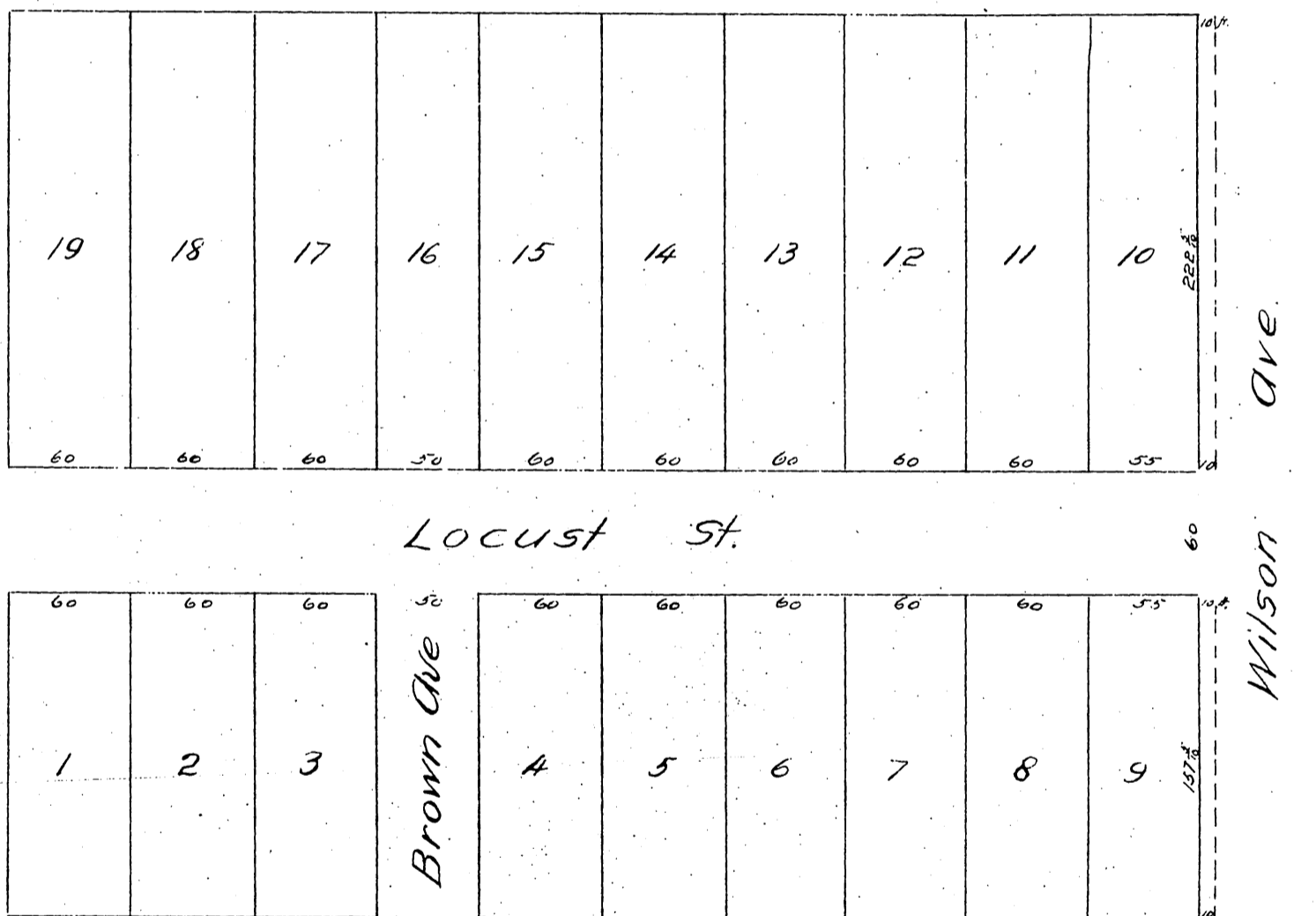


MAP
of
Farris and Lyman's Subdivision
of Lots 21 and 22 in Block F of the lands of the
MUTUAL ORCHARD COMPANY

Williell Thomson Sur
Surveyed Aug. 1886.

Wetherby Draughtsman

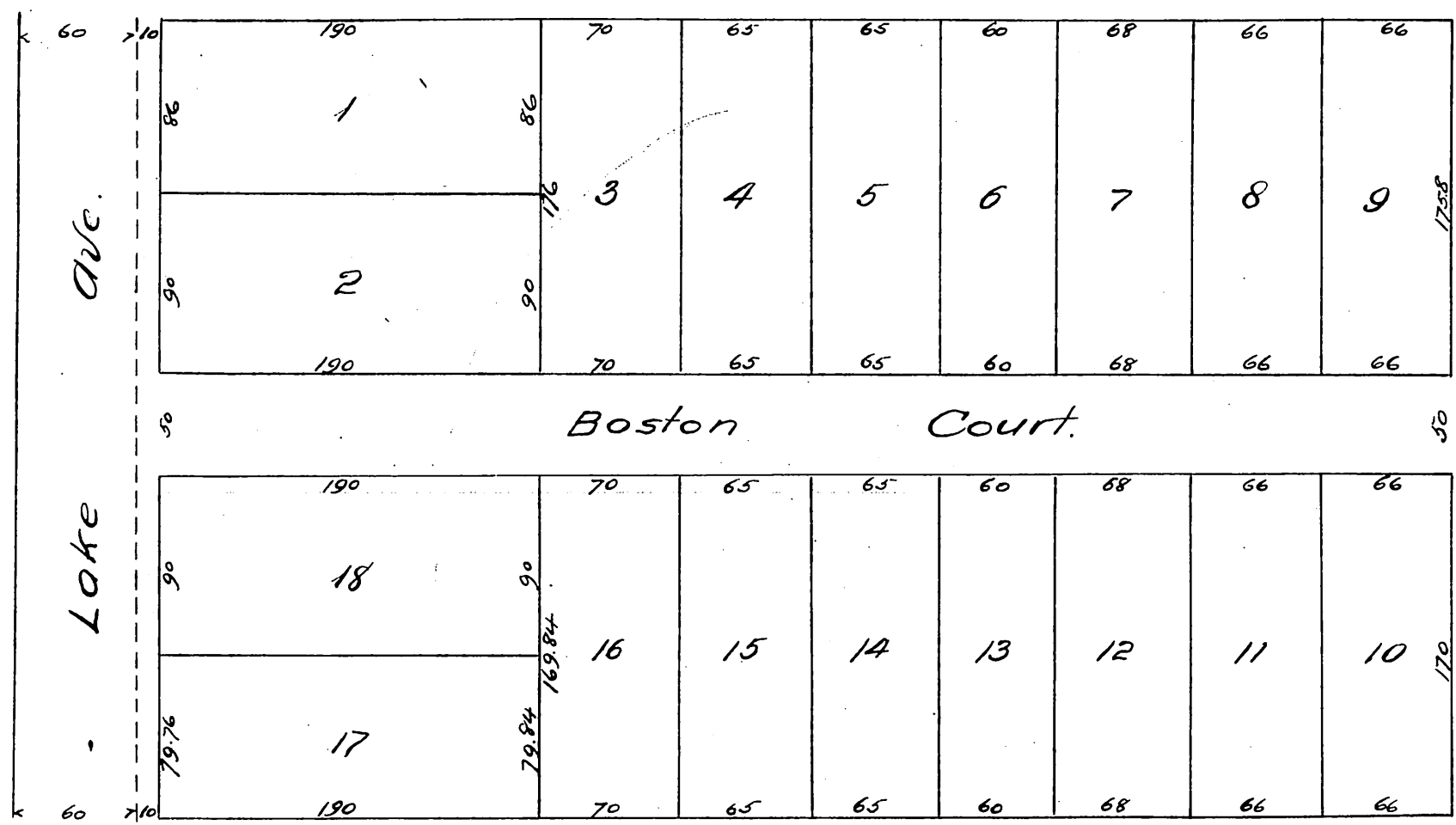


A full, true and correct copy of the original
(reduced on the scale of 80 feet to one inch)
recorded January 8, 1887 at 44 min. past 11 O. M.
at request of Ed. L. Farris.

James L. Gibson, County Recorder.
By George Bugbee, Deputy.

MAP
 OF
Farris and Lyman's Subdivision
 of lots "32" and "33" of lands of the Mutual Orchard Co.
 San Pascual Tract
 PASADENA
 LOS ANGELES CO. CAL.

Surveyed Nov. 1886 by J.M. Willard, C.E.
 Scale 60 ft to 1 inch.



A full, true and correct copy of the original
 (reduced to the scale of 80 feet to one inch)
 recorded January 8, 1887 at 45 min. past 11 A.M.
 at request of Ed. L. Farris.
 Frank A. Gibson, County Recorder.
 by Geo. Hughes, Deputy