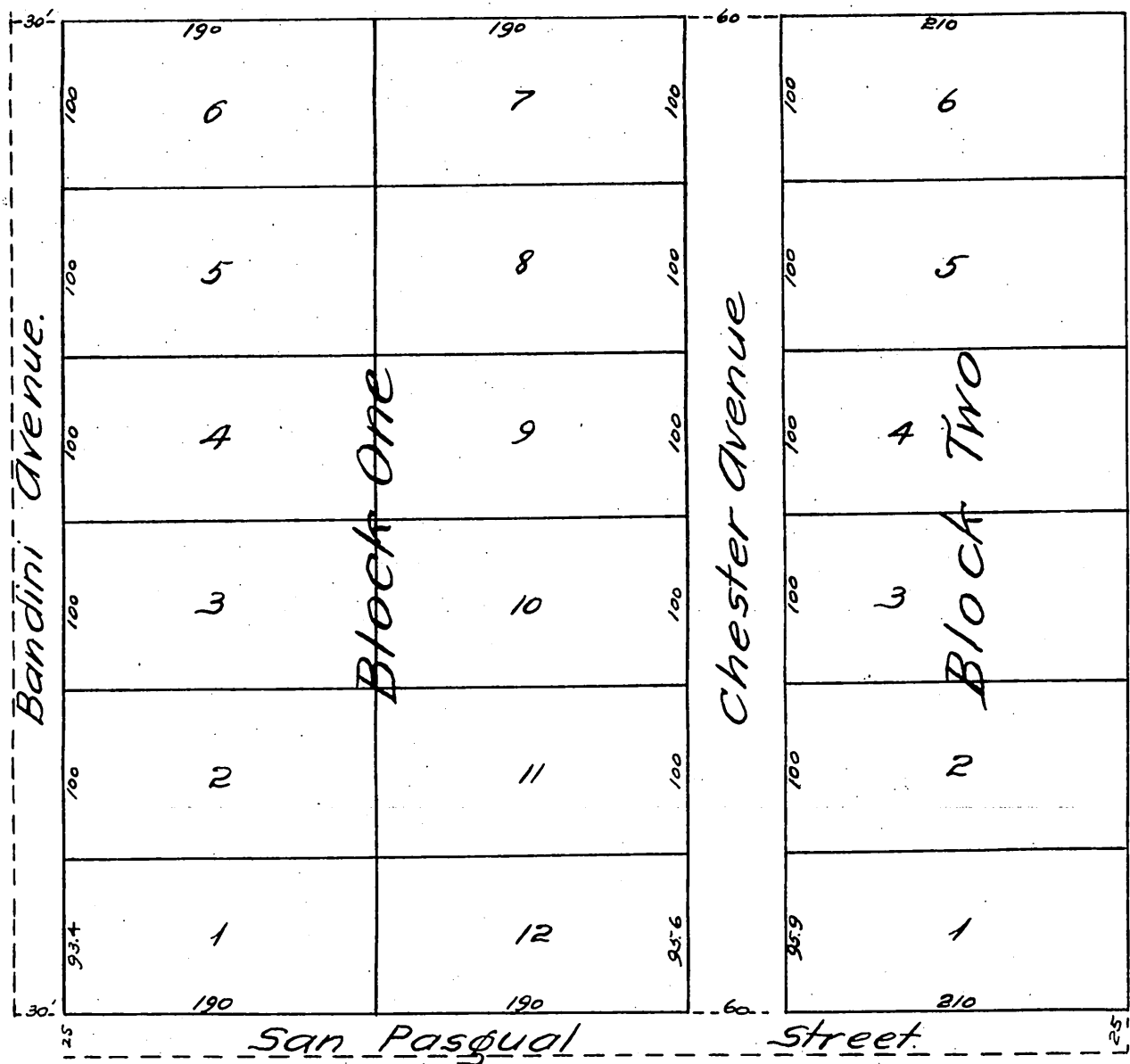


D. W. Shelhamer's Subdivision
 of $9\frac{23}{100}$ acres in the South West corner of the 20 acre tract
 conveyed by George N. Briggs by deed to Daniel W. Shelhamer
 recorded in Book 137 of Deeds Page 331 Records of
 Los Angeles County Cal.

Riggins and Jessup Surveyors
 Scale 60 ft = 1 inch.



a full, true and correct copy of the original
 (reduced to the scale of 100 feet to one inch)
 recorded January 10 1887 at 23 min past 8
 a.m. at request D. W. Shelhamer.
 Frank A. Gibson, County Recorder.
 by Geo. Bugbee, Deputy.