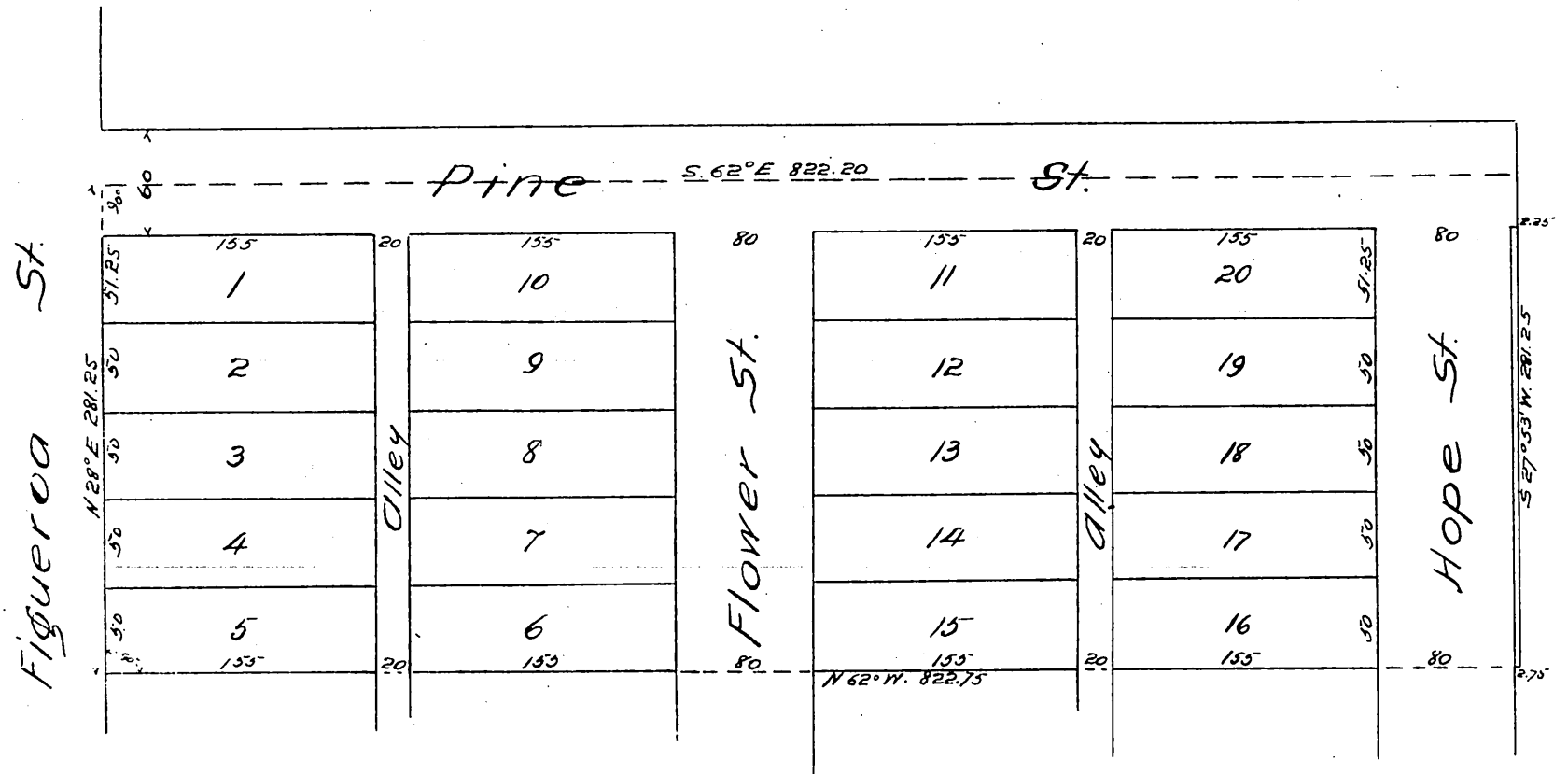


MAP OF THE Lemmert Tract.

Surveyed Oct. 1886.
Geo. C. Cleveland Surveyor.
P.H. Lemmert. Owner.
Scale 50 ft to 1 inch.



A full, true and correct copy of the original
(reduced to the scale of 100 feet to one inch)
recorded January 10, 1887 at 11³⁶ A.M.
at request of P.H. Lemmert.

Frank O. Gibson County Recorder.
By George Bugbee Deputy.