

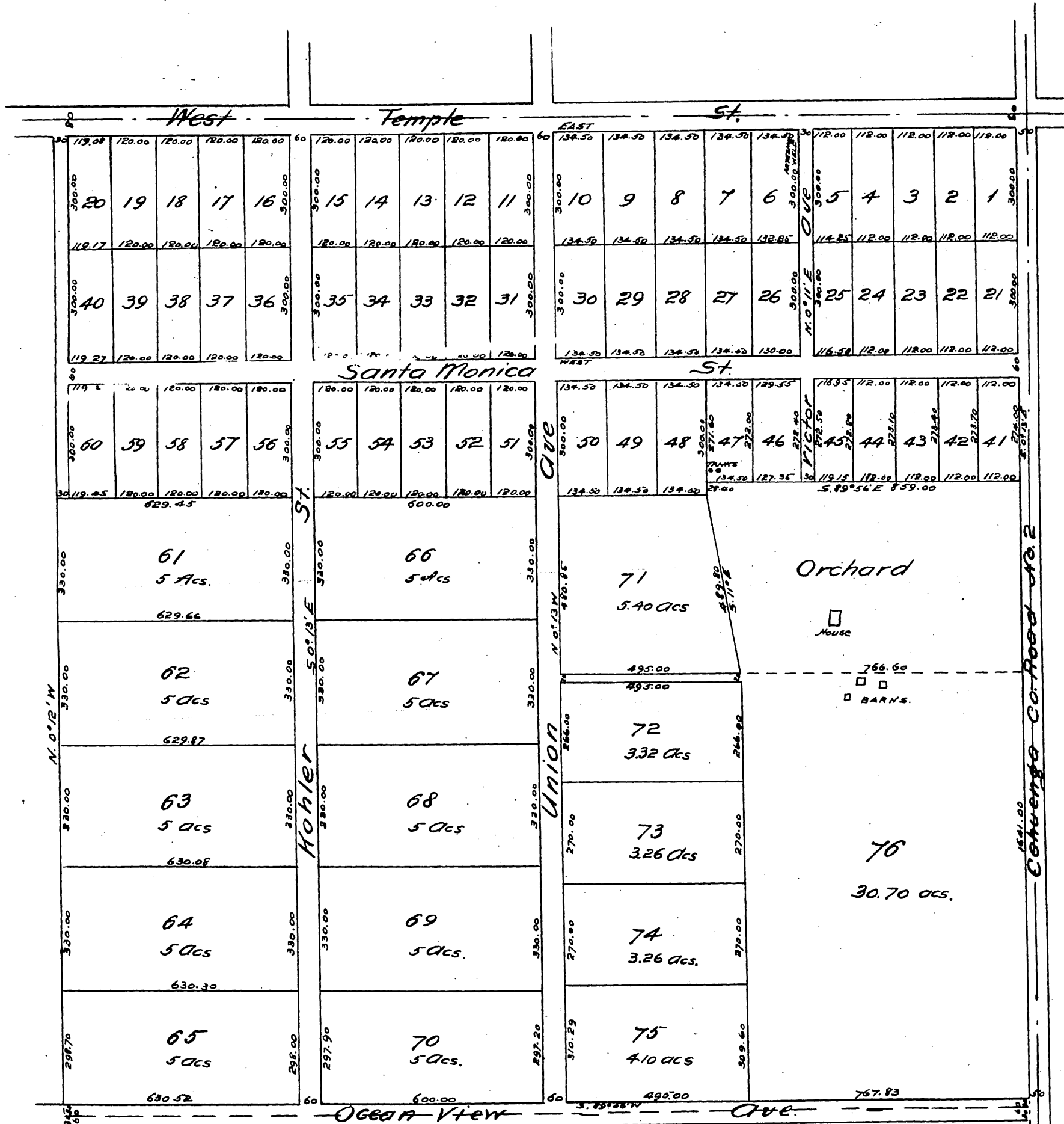
# Map

## I. A. Weid's Subdivision

of the  
S.E. 1/4 Sec. 14, T. 1 S., R. 14 W., S. 20 N.

Surveyed Dec 24<sup>th</sup> 1886 by E. J. Wright Co. Surveyor.

Scale 200 ft. to one inch.



A full true and correct copy of the original (reduced to scale of 300 feet to 1 inch) recorded January 11<sup>th</sup> 1887 at 11 A.M. at request of I. A. Weid.

Frank A. Gibson County Recorder.  
by George Bugbee Deputy.