



MAP

OF

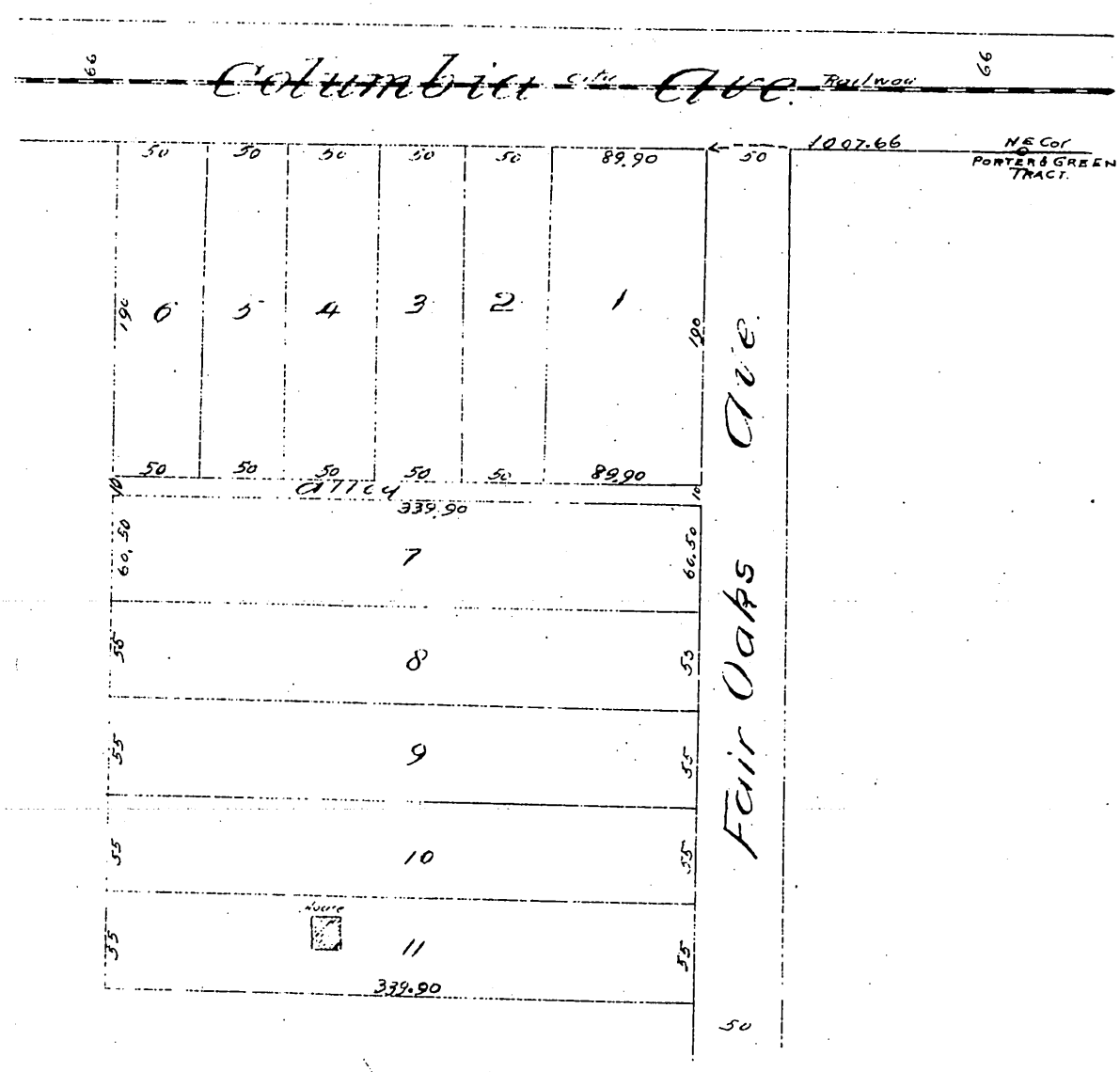
George M. Stimson's Subdivision

of a part of the

Porter & Green Tract in Division G of the San Gabriel Orange Grove Association Lands,
South Pasadena, Los Angeles Co, Calif

Recorded in Book 2 Miscellaneous Records Los Angeles Co Page 556 to 559
Surveyed Dec 1886 by J. Norton, C.E.

Scale 50 ft to 1 in.



A full true and correct copy of the original (reduced
one half) recorded January 11th 1887 at 3²³ P.M.
at request of George M. Stimson
Frank A. Gibson County Recorder
By George Bugbee Deputy