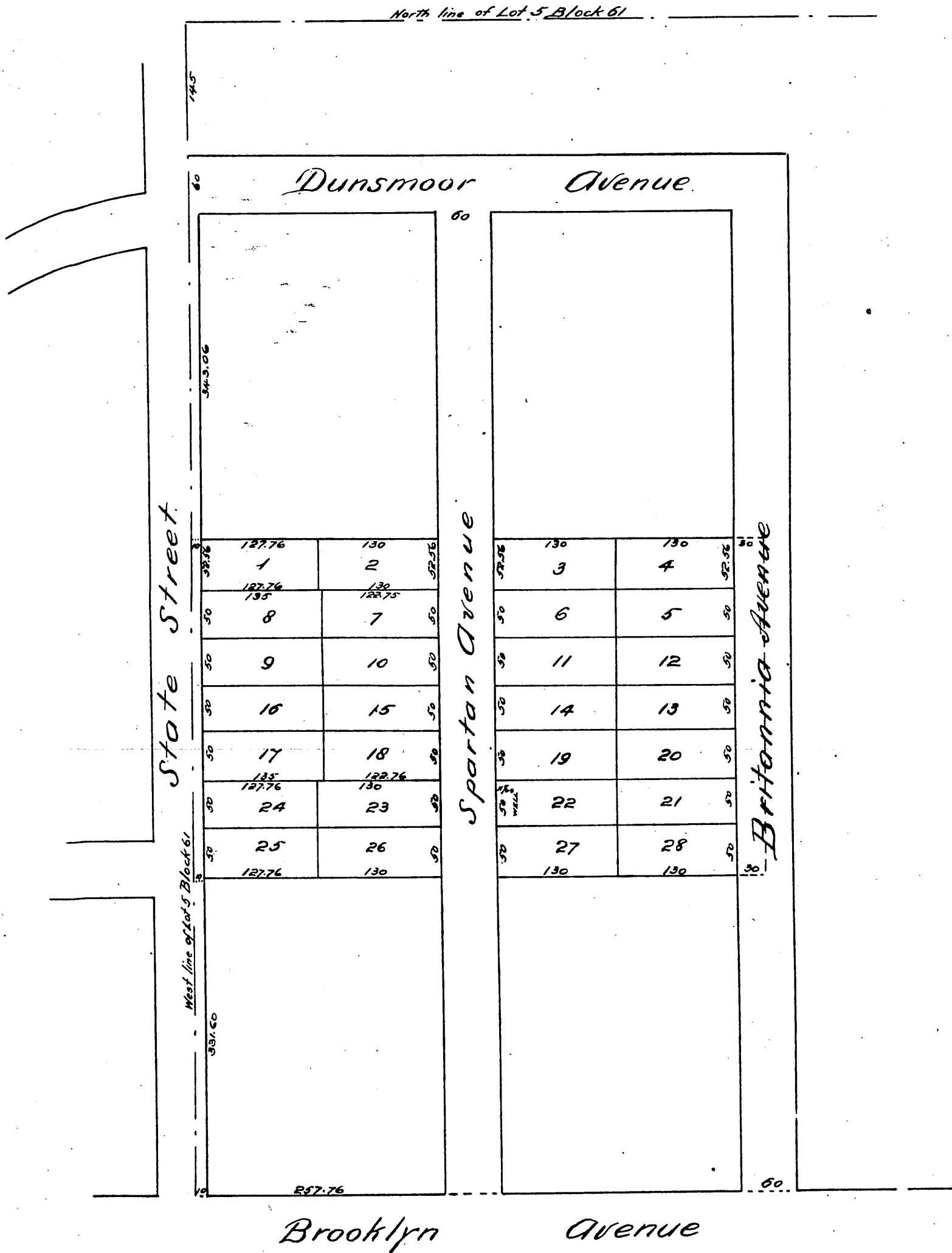


1343

Map
 of
 Wirsching's Subdivision
 of a part of
 Lot 5 Block 61, Hancock Survey of Los Angeles City Division Lots.
 Made in June 1886 by J. St. Bernal.

Scale 60ft = 1 inch.



A full true and correct copy of the original (reduced to scale of 120 feet to 1 inch) recorded January 11th 1887 at 4²³ P.M. at request of P. E. Wirsching
 Frank A. Gibson. County Recorder.
 by Geo. Bugbee Deputy.