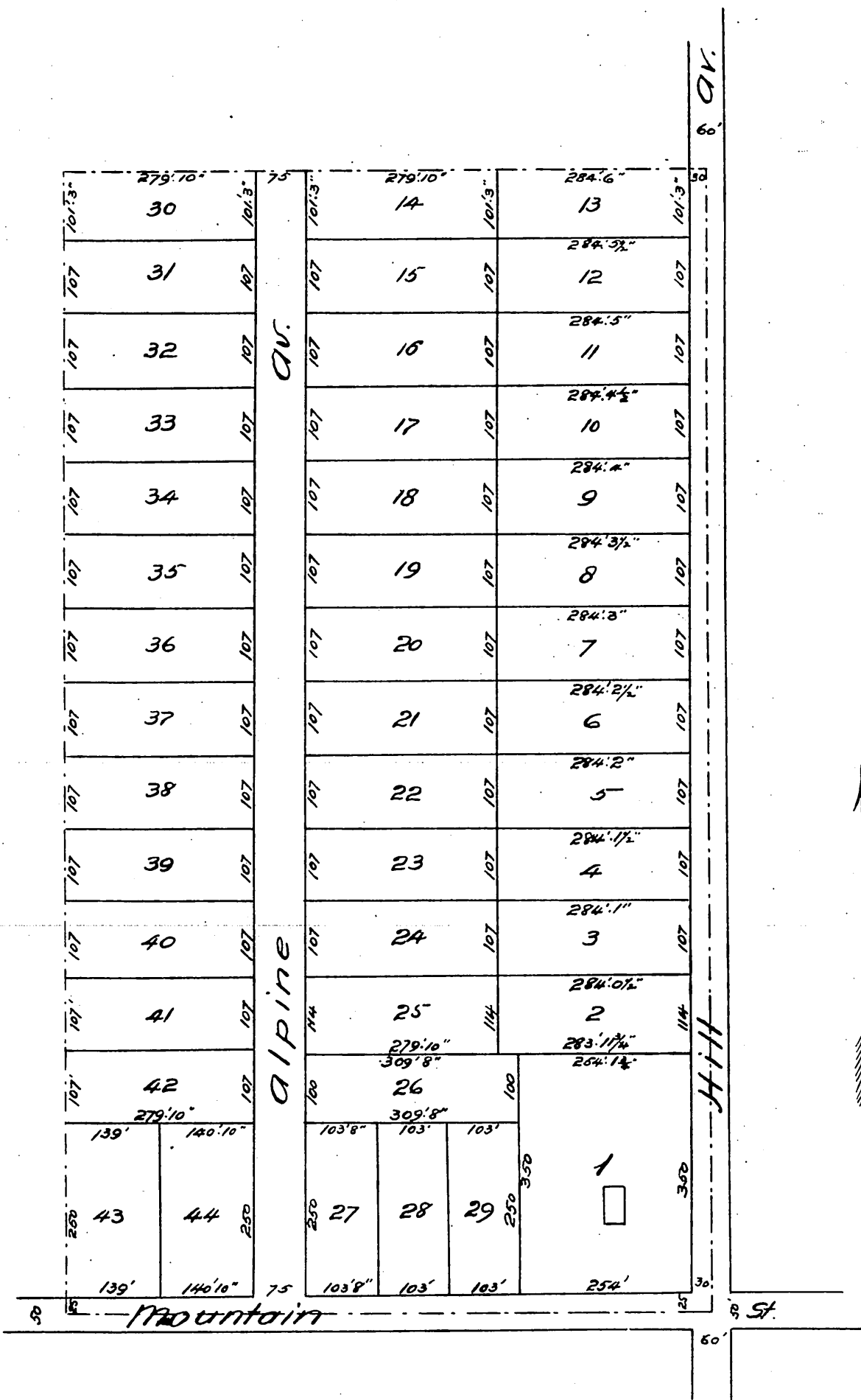


1350

# Map OF R. Williams' Subdivision OF THE Alpine Tract.

Surveyed December 1886 by James F. Place C.E.  
Surveyor.



A full, true and correct copy of the original  
(reduced to the scale of 200 feet to one inch)  
recorded January 14, 1887 at 15 min. past 9 A.M.  
at request of R. Williams.

Frank A. Gibson, County Recorder.  
by George Kugler, Deputy.