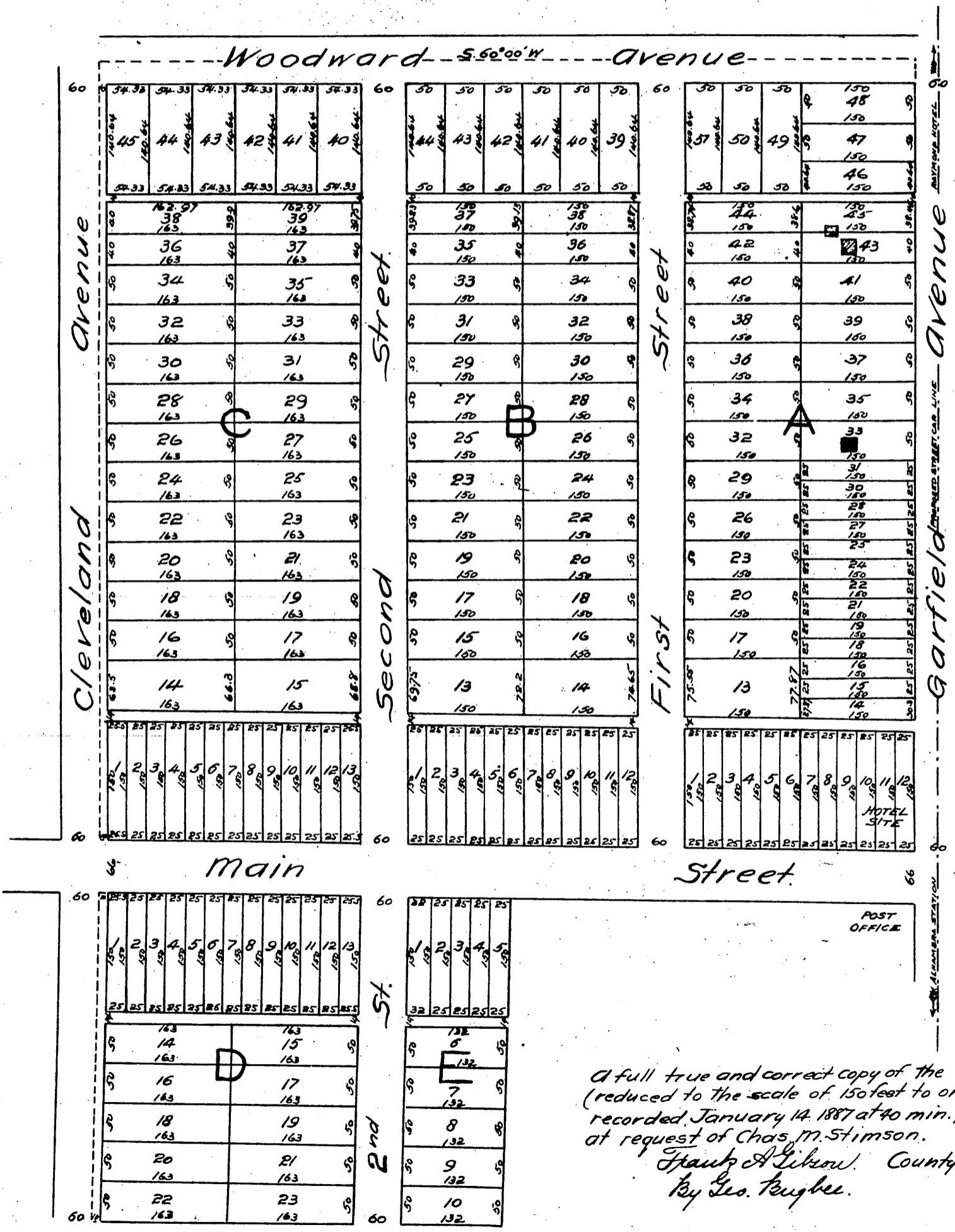


For appendix to this map see Book 8. Page 618 Misc. Records.

PLAN OF POMEROY & STIMSON'S Subdivision of the Town of ALHAMBRA.

Nov. 17th 1886 by L. H. Carver Civil Engineer
Scale 1 in = 100 ft.



A full true and correct copy of the original (reduced to the scale of 150 feet to one inch) recorded January 14, 1887 at 40 min. past 12 M. at request of Chas. M. Stimson.
Frank A. Likow, County Recorder.
By Geo. Hughes, Deputy.