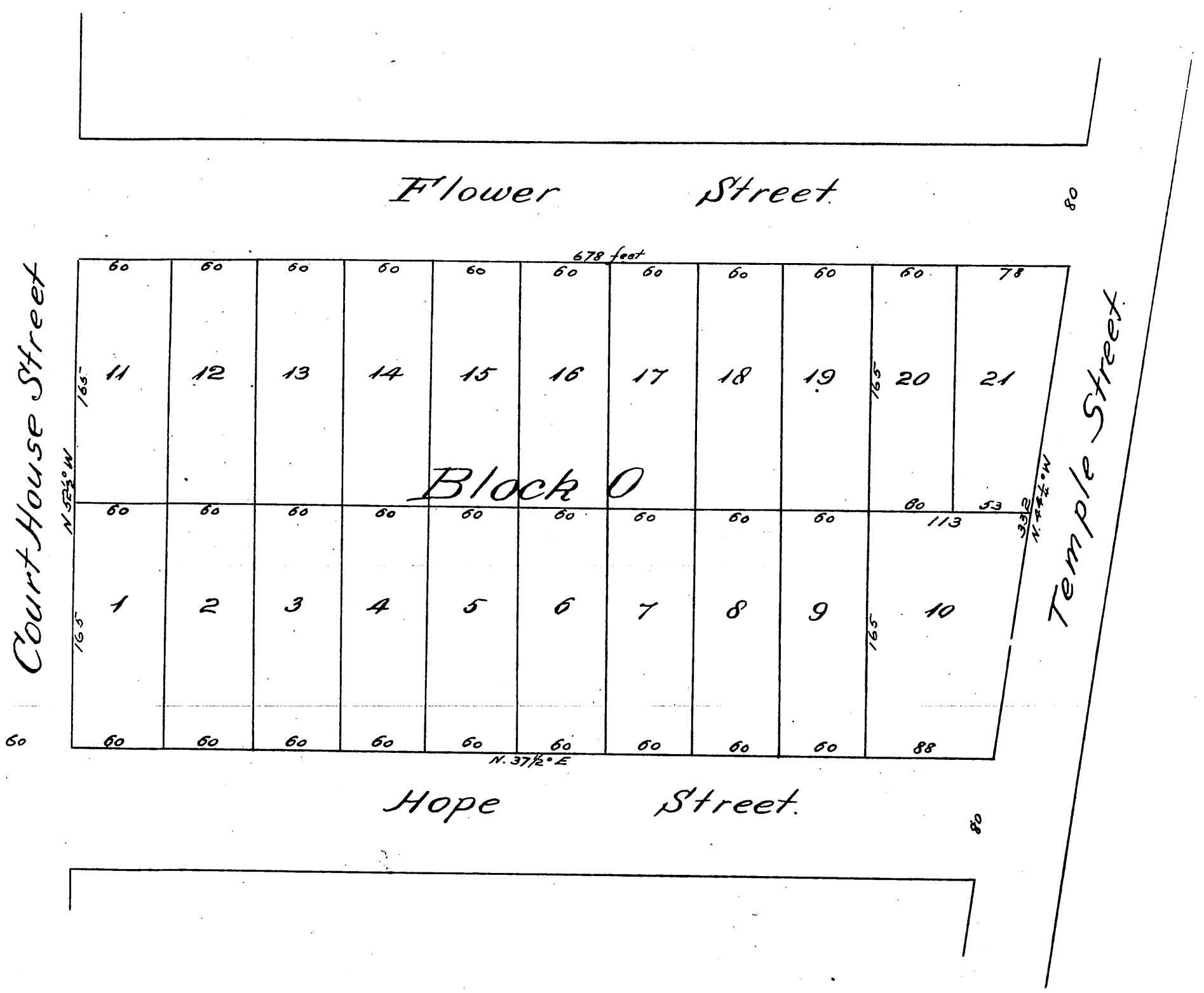


1355

Map
 OF
 Block O of the Mott Tract
 as subdivided and surveyed 1868 & 1869
 by H. Pickett, C.E.
 Scale 80ft per inch.



A full true and correct copy of the original recorded
 January 15th 1887 at 9³⁰ A.M. at request of P. Bilderrain
 Frank A. Gibson. County Recorder
 by Geo. Bugbee Deputy.