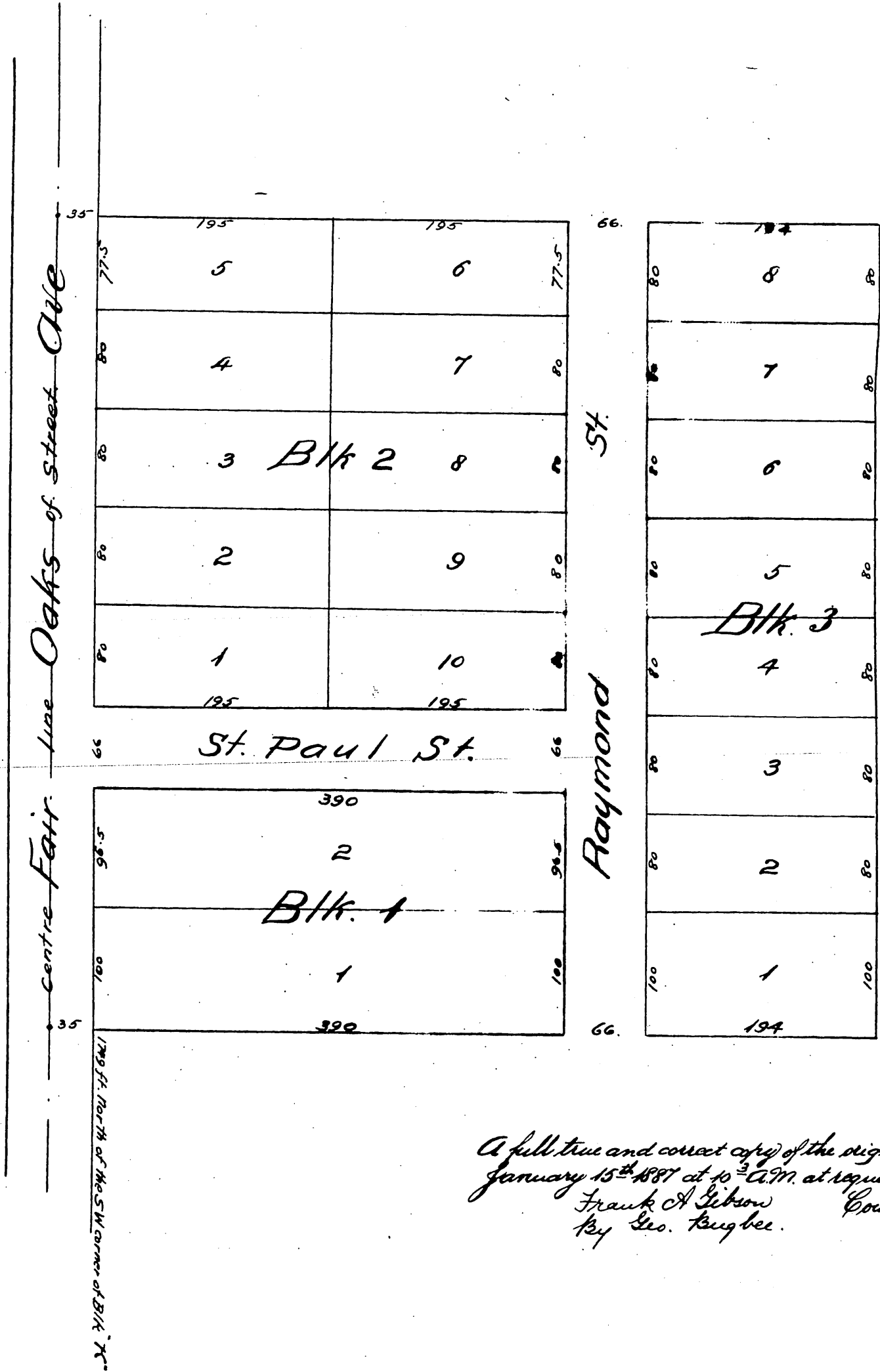


+13+58

# Map OF Nelsons Subdivision

OF  
Ten acres in Blk. H of the lands of J. A. Painter & P. F. Ball.  
Pasadena, Los Angeles Co. Cal.

Surveyed by J. M. Willard.  
Jan. 1887.



A full true and correct copy of the original recorded  
January 15<sup>th</sup> 1887 at 10<sup>30</sup> A.M. at request of J. P. Nelson.  
Frank A. Gibson County Recorder  
by Geo. Kugbee Deputy.