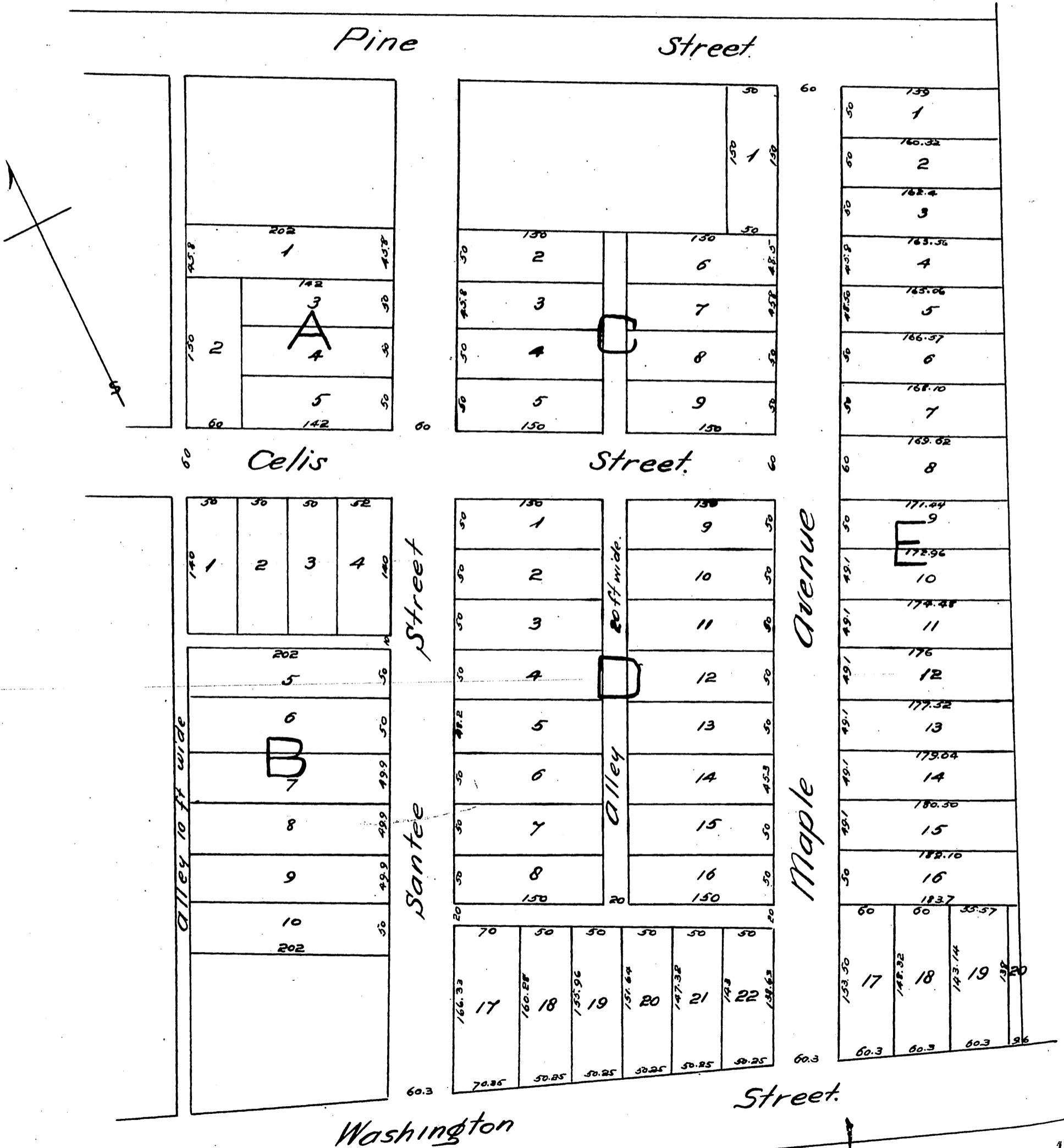


# Supplemental Map

of  
Newell & Rader Subdivision  
of the  
Celis Vineyard Tract.

Scale 100 feet to one inch.



A full, true and correct copy of the original  
recorded January 17<sup>th</sup> 1887 at 2.24 P.M. at request  
of M. F. O'Dea.

Frank A. Gibson, County Recorder  
By Geo. Bugbee Deputy.