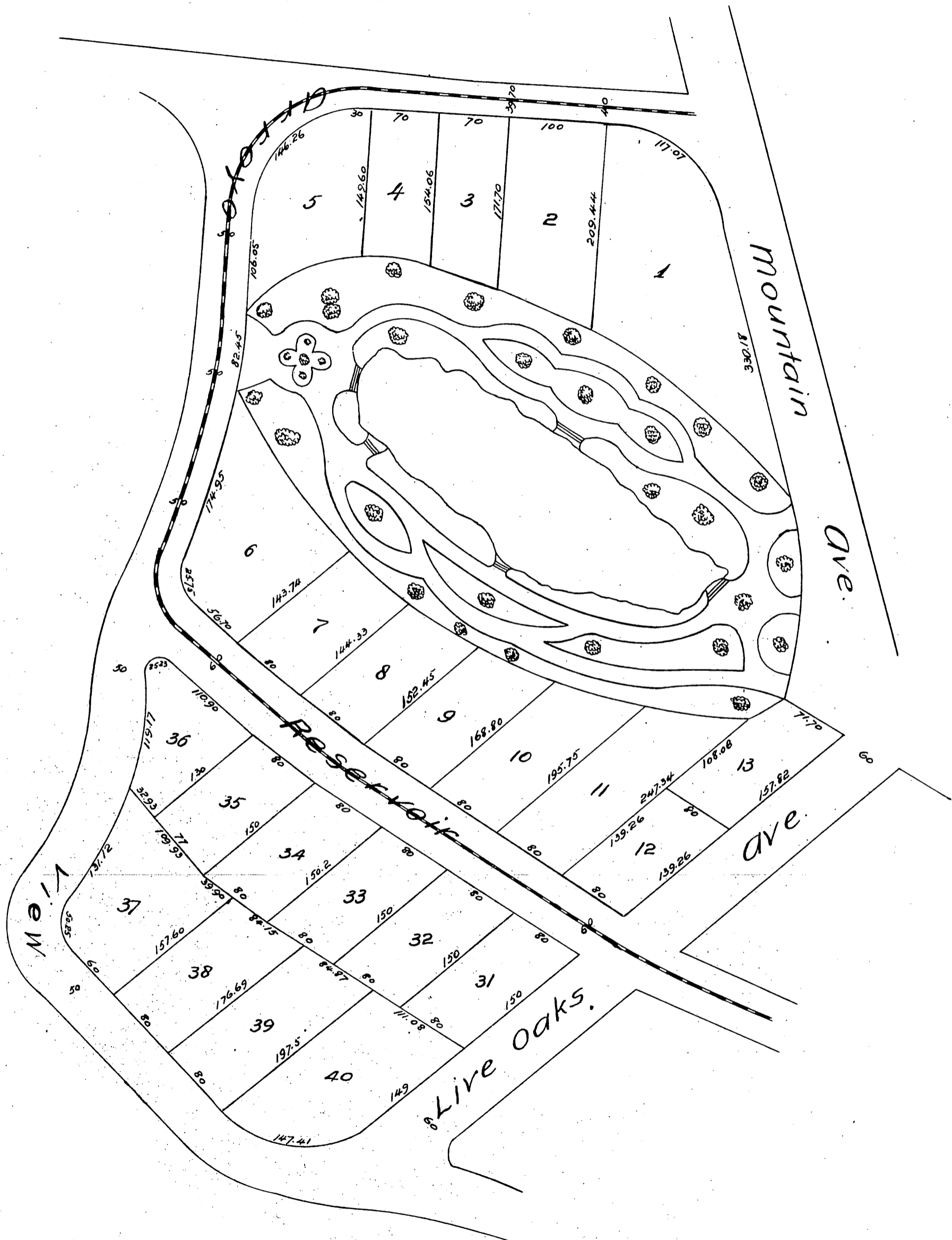


1361



1302

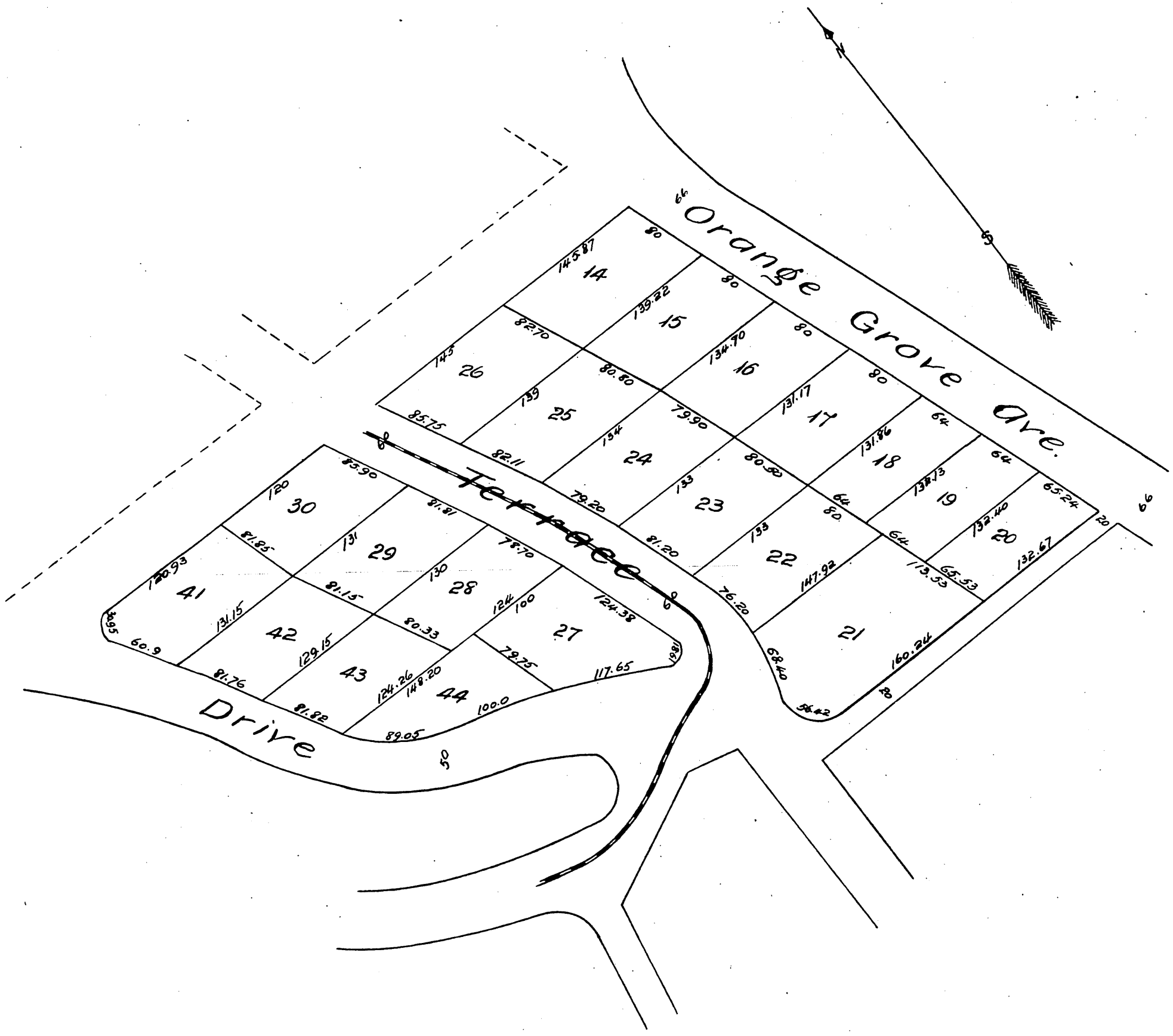
# Park Place

## Lands of the Park Place Improvement Co.

Subdivision of the North 363 ft. of lands marked Vawter Division "D"  
and the Eastern portion of Reservation Lands marked Reservoir Park  
of the lands of the San Gabriel Orange Grove Association

### Pasadena, Los Angeles Co Calif.

Surveyed Dec. 1886 by J. M. Willard C. E.  
Scale 100 ft to 1 inch.



A full true and correct copy of the original  
 recorded January 17, 1887 at 54 min. past 2 P.M.  
 at request of I. N. Mundell  
 Frank A. Sisson. County Recorder.  
 By Geo. Bugbee Deputy.