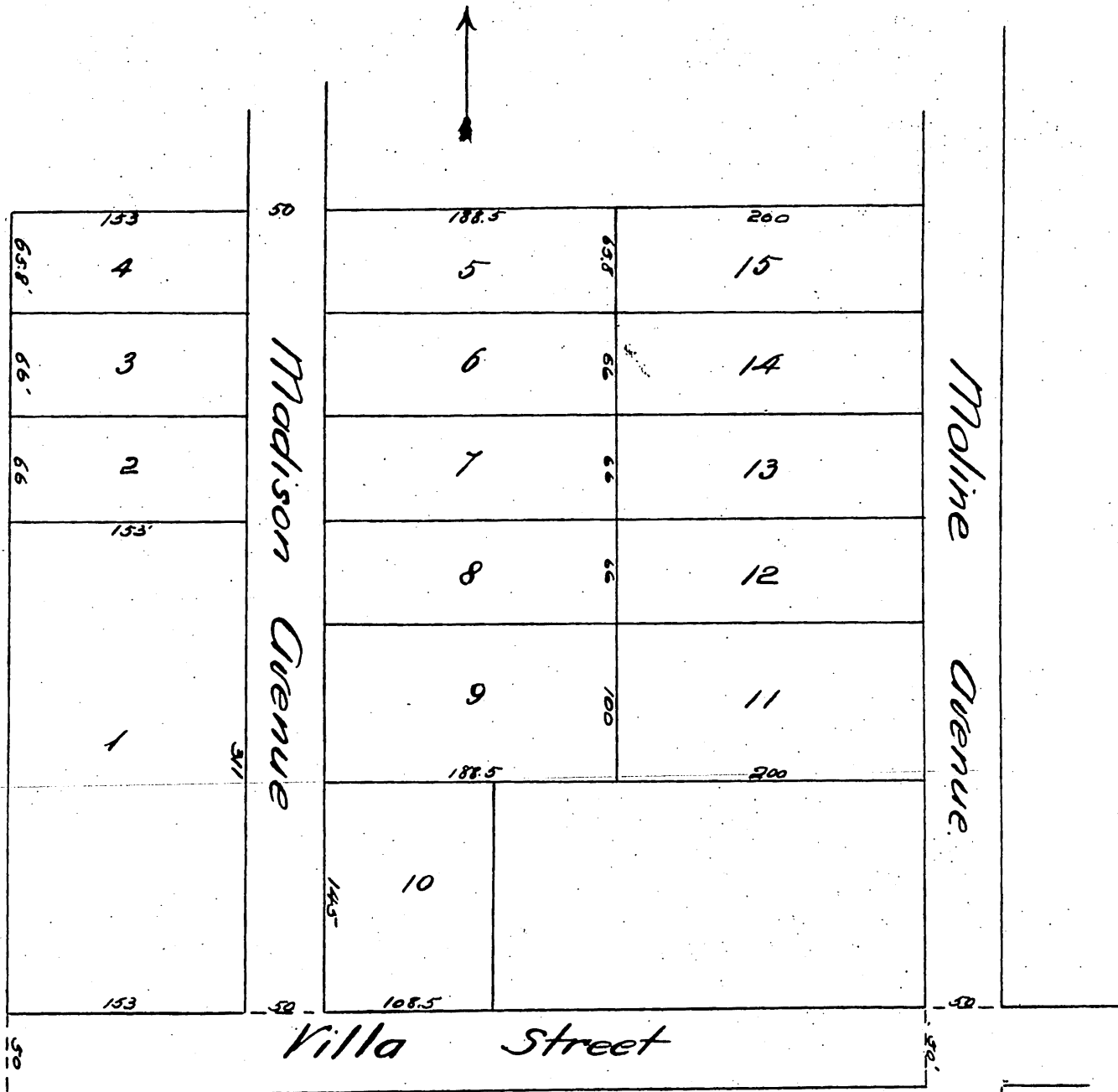




Bundy's Second Subdivision
 of
Lot 4 Blk S San Pasqual Tract & part of Grogan Tract,
Except Lot 1, First Subdivision,
 Pasadena, Cal.
 Riggins & Jessup, Surveyors Dec. 30th 1886.
 Scale 60ft = 1 inch.
 Reduced to scale of 100ft to one inch



A full true and correct copy of the original recorded
January 19th 1887 at 9⁵⁰ A.M. at request of Samuel Bundy.
 Frank A. Gibson County Recorder
 by Geo. Bugbe Deputy.