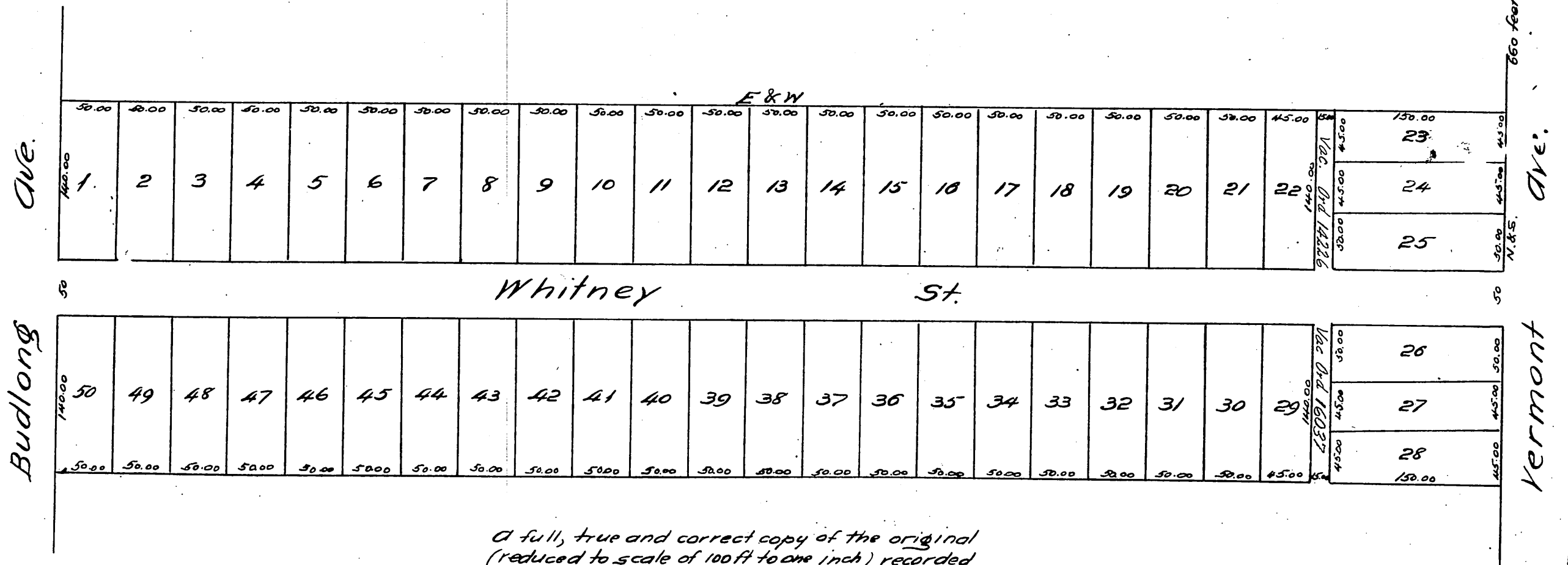


Map OF THE Whitney Tract.

Being the subdivision of part of the E 1/2 of
T. E 1/4 of Sec. 1 T. 2 S., R. 14 W., S. B. M.

Scale 50 feet to one inch.

E. G. Jones C.E.



A full, true and correct copy of the original
(reduced to scale of 100 ft to one inch) recorded
January 19 1887 at 9²⁰ A M at request of Robert Turner
Frank A. Liborn County Recorder.
By Geo. Bugbee. Deputy.

