

1300

# Map

of

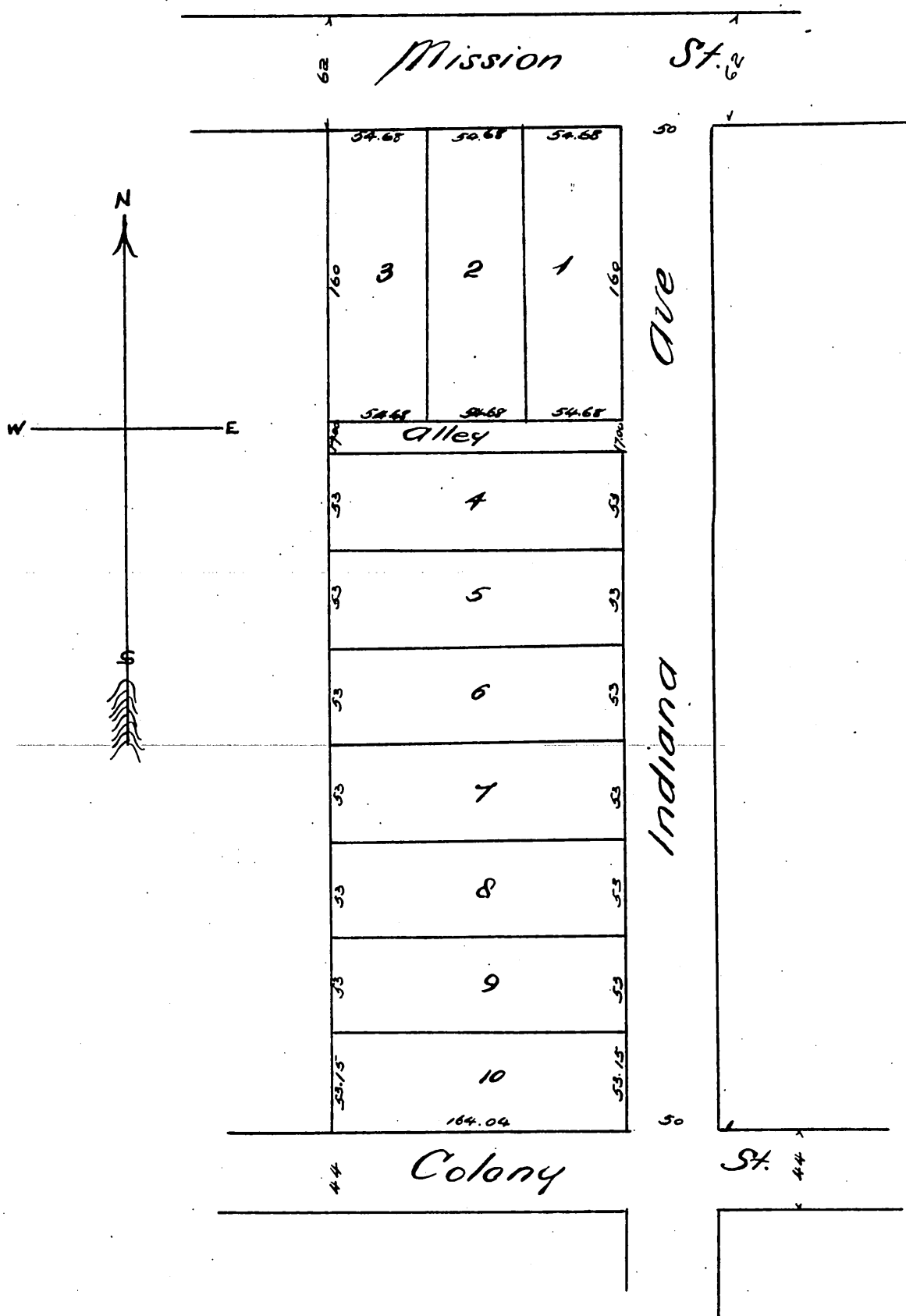
## Fletcher, Randall & Twombly's Subdivision

of

Lots 5, 6, 7 & 8 Block 1 of the Taylor Tract a part of Div. I of the San Gabriel Orange Grove Ass'n, recorded in Book 7 page 19 Mis' Records of Los Angeles Co.

Surveyed Jan. 1887 by J. Morton, C.E.

Scale 50 ft to 1 in.



A full, true and correct copy of the original (reduced to the scale of 80 ft to 1 inch) recorded January 19<sup>th</sup> 1887 at 38 Min. past 9 O. M. at request of W. H. Fletcher.  
 Frank A. Gibson County Recorder.  
 By Geo. Bugbee Deputy.