

C.C. Olmsted's Subdivision

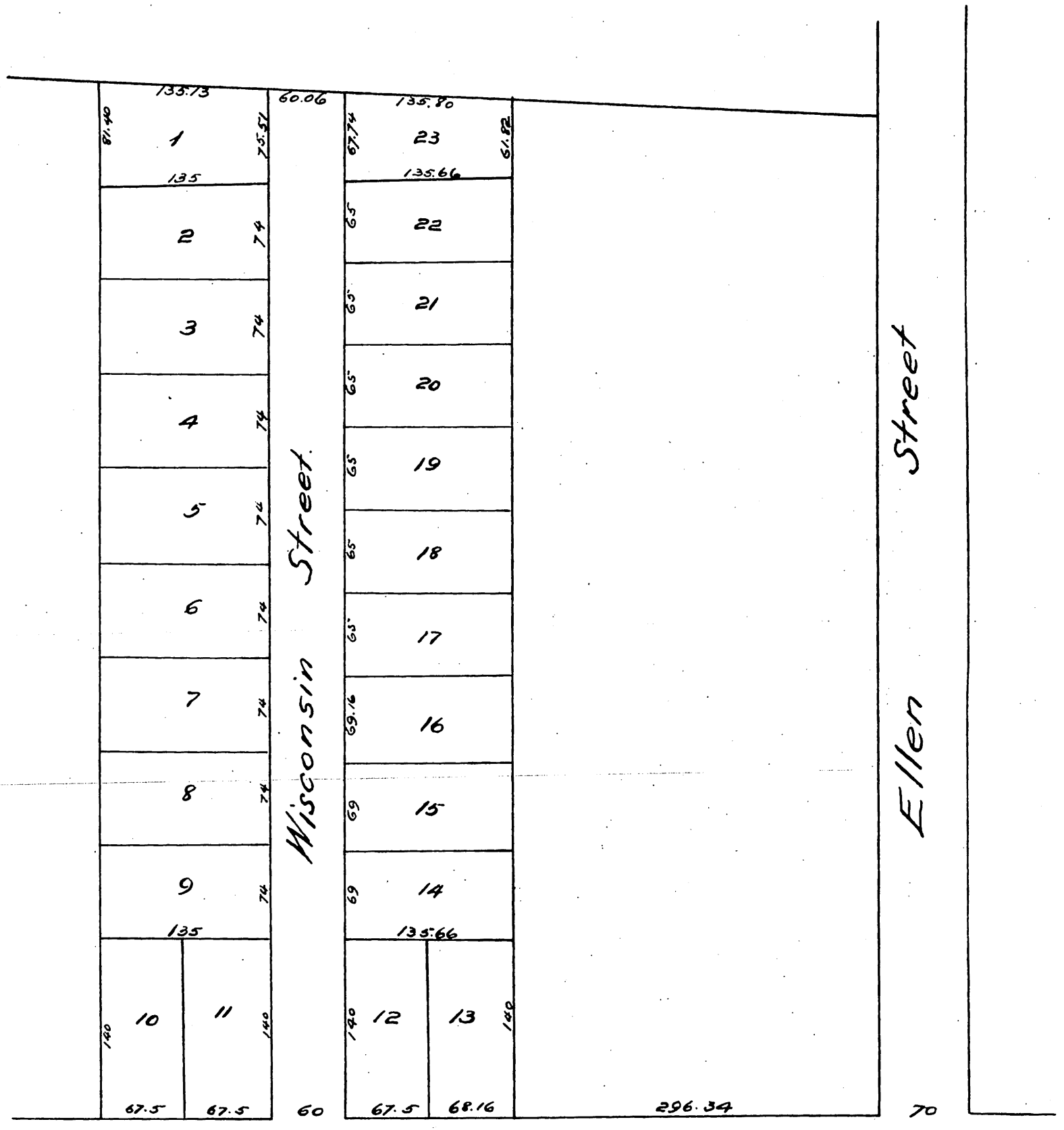
OF

Lot 2. Block 181. Pomona,

Los Angeles Co., Cal.

Jas. T. Taylor. Surveyor, January 1887

Scale 50 feet to 1 inch.



Holt Avenue.

Rebecca St.

A full true and correct copy of the original
 reduced to the scale of 100ft to 1 inch) recorded
 January 20th 1887 at 3³⁰ PM. at request of House & Thomas.
 Frank A. Gibson County Recorder.
 by George Bugbee Deputy.