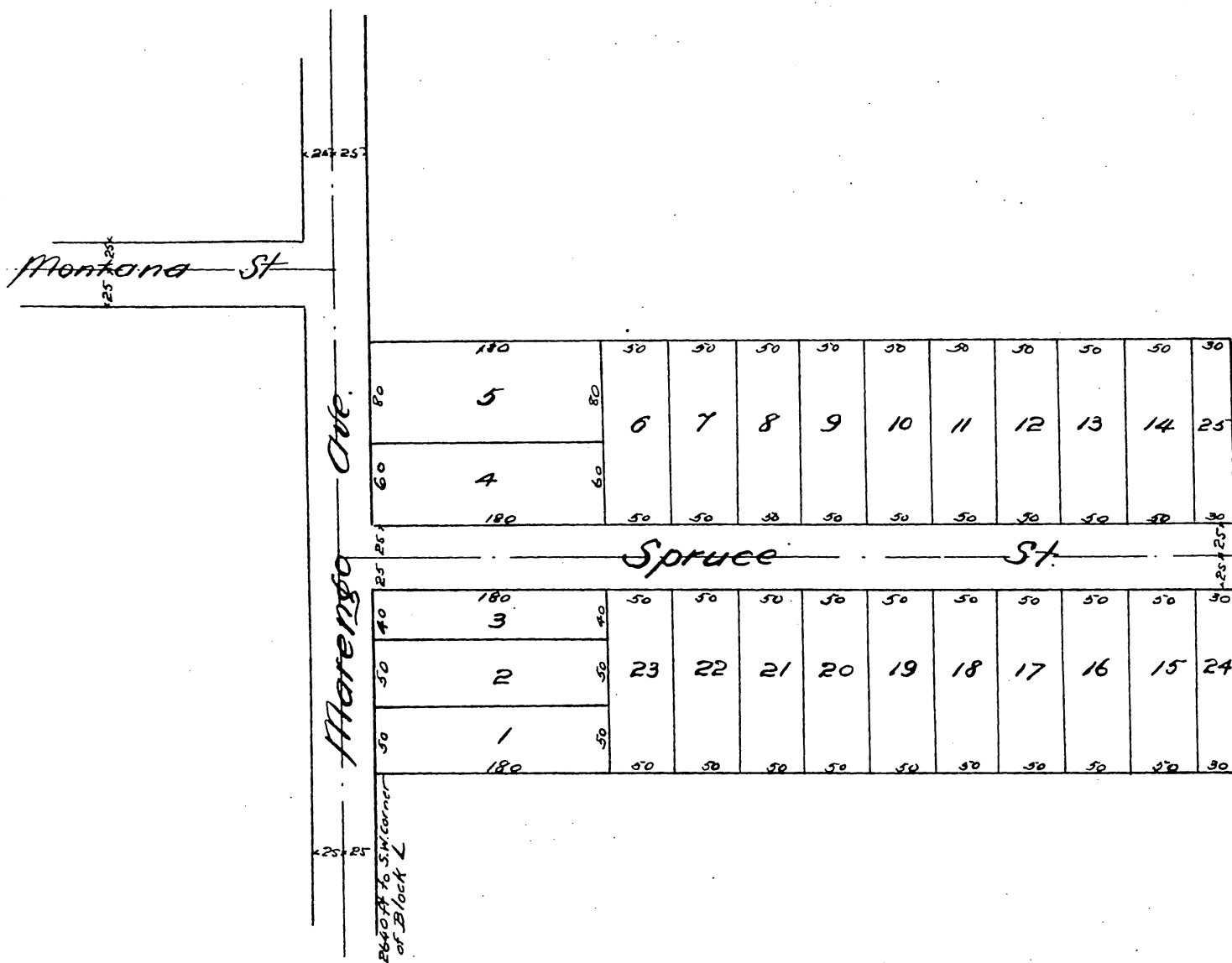




Map
 of
Powells Subdivision
 of the central portion of.
Block L of the subdivided lands of J. A. Painter & B. F. Ball.
Pasadena, Los Angeles Co., Cal.
Surveyed Jan. 1887 by J. M. Willard. C. E.
Scale 60 ft to 1 inch.



A full, true and correct copy of the original (reduced to the scale of 120 ft. to one inch) recorded 21st January, 1887 at 56 Min. past 11 O. M. at request of James B. F. Powell.
Frank A. Gibson County Recorder.
By Geo. Dugbee. Deputy.