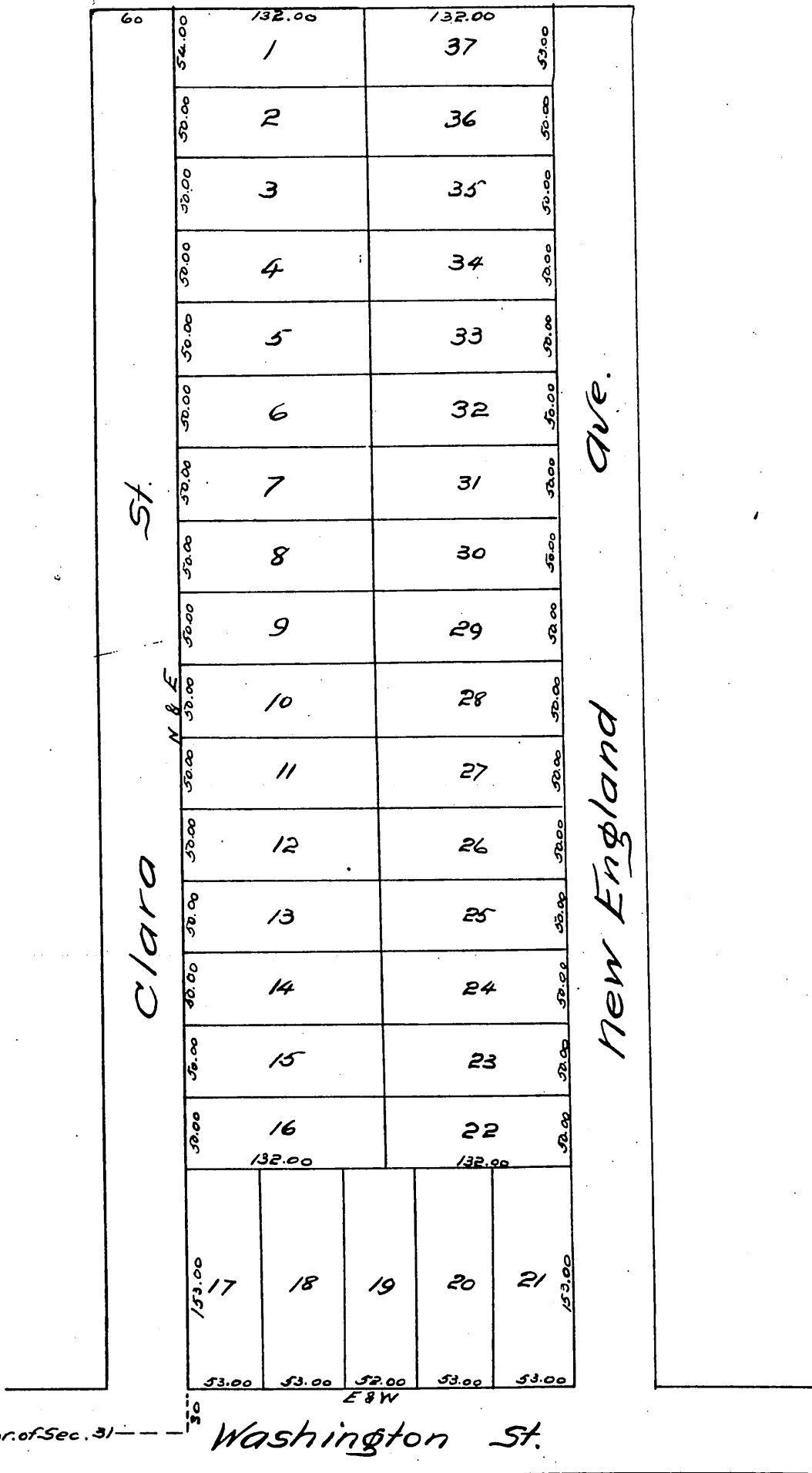


Map OF THE Aurora Tract.

Being the subdivision of part of the fractional
N. W. 1/4 of Sec. 31 T. 15. R. 13 W. S. B. M.

Scale 100 feet to 1 inch

E. G. Jones. C. E.



--- 891 feet from SW. cor. of Sec. 31 ---

A full, true and correct copy of the original
recorded January 21, 1887 at 35 min. past 1
P. M. at request of O. W. Baldwin.

Frank A. Sibley County Recorder
By Geo. Hughes Deputy.