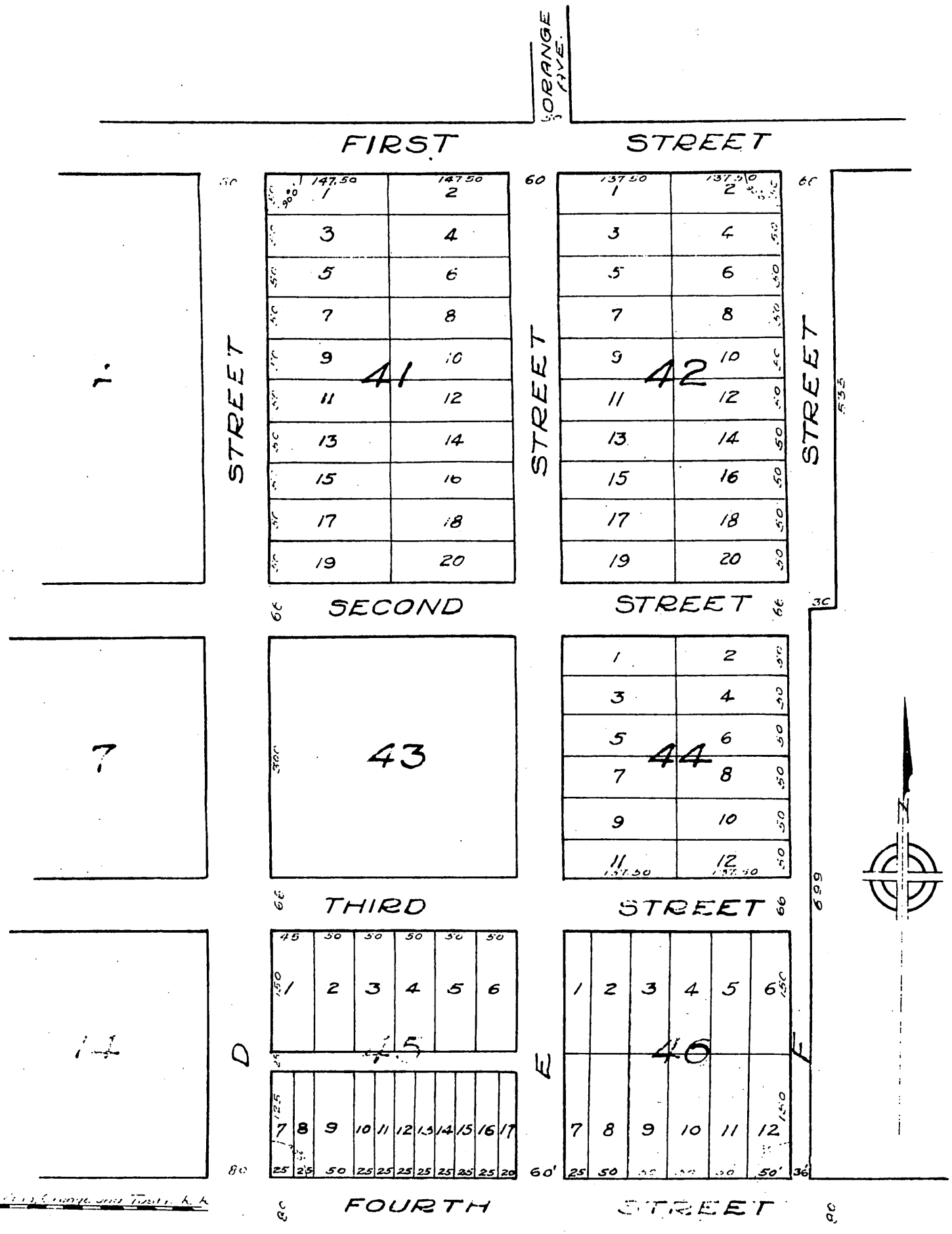




**Map**  
 of a  
**Part of Tustin**  
 in the  
 County of Los Angeles  
 Showing the subdivision of the lands owned by the Tustin Land and  
 Improvement Company, subdivided of request  
 of said Company, in Jan. 1887  
 by Charles T. Healey, C.E.  
 Scale. 100ft to one inch.



A full true and correct copy of the original (reduced  
 to the scale of 150 feet to an inch), recorded January 22<sup>nd</sup>  
 1887, at 55 min. past 9 A.M. at request of G. E. Prible.  
 Frank G. Gibson, County Recorder.  
 By Geo. Bugbee, Deputy.