

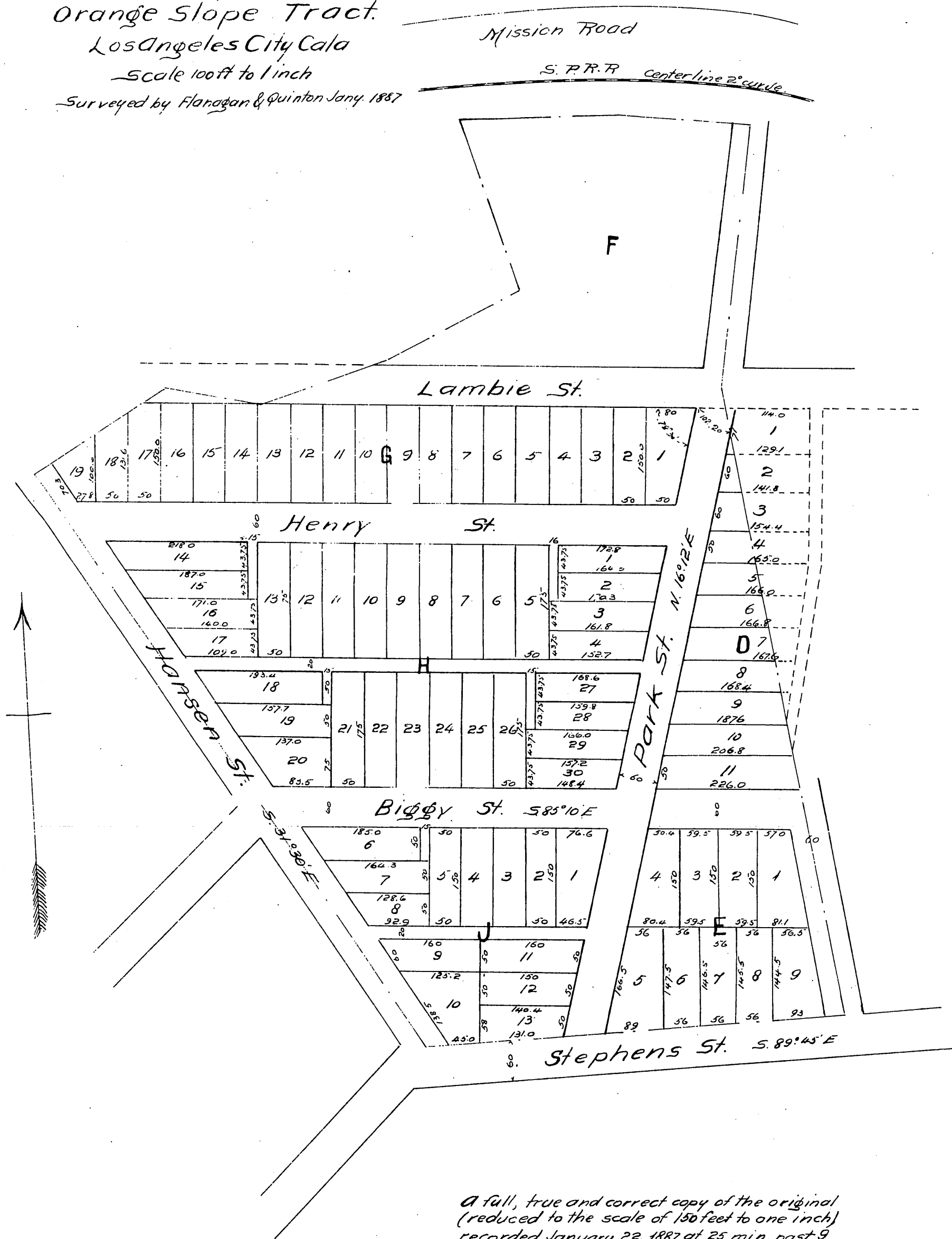
Map OF THE Flanagan Subdivision

OF
Orange Slope Tract.

Los Angeles City Cala

Scale 100ft to 1 inch

Surveyed by Flanagan & Quinton Jany. 1887



A full, true and correct copy of the original
(reduced to the scale of 150 feet to one inch)
recorded January 22, 1887 at 25 min. past 9
A. M. at request of T. J. Flanagan.

Frank A. Gibson, County Recorder.
By Geo. Bugbee, Deputy.