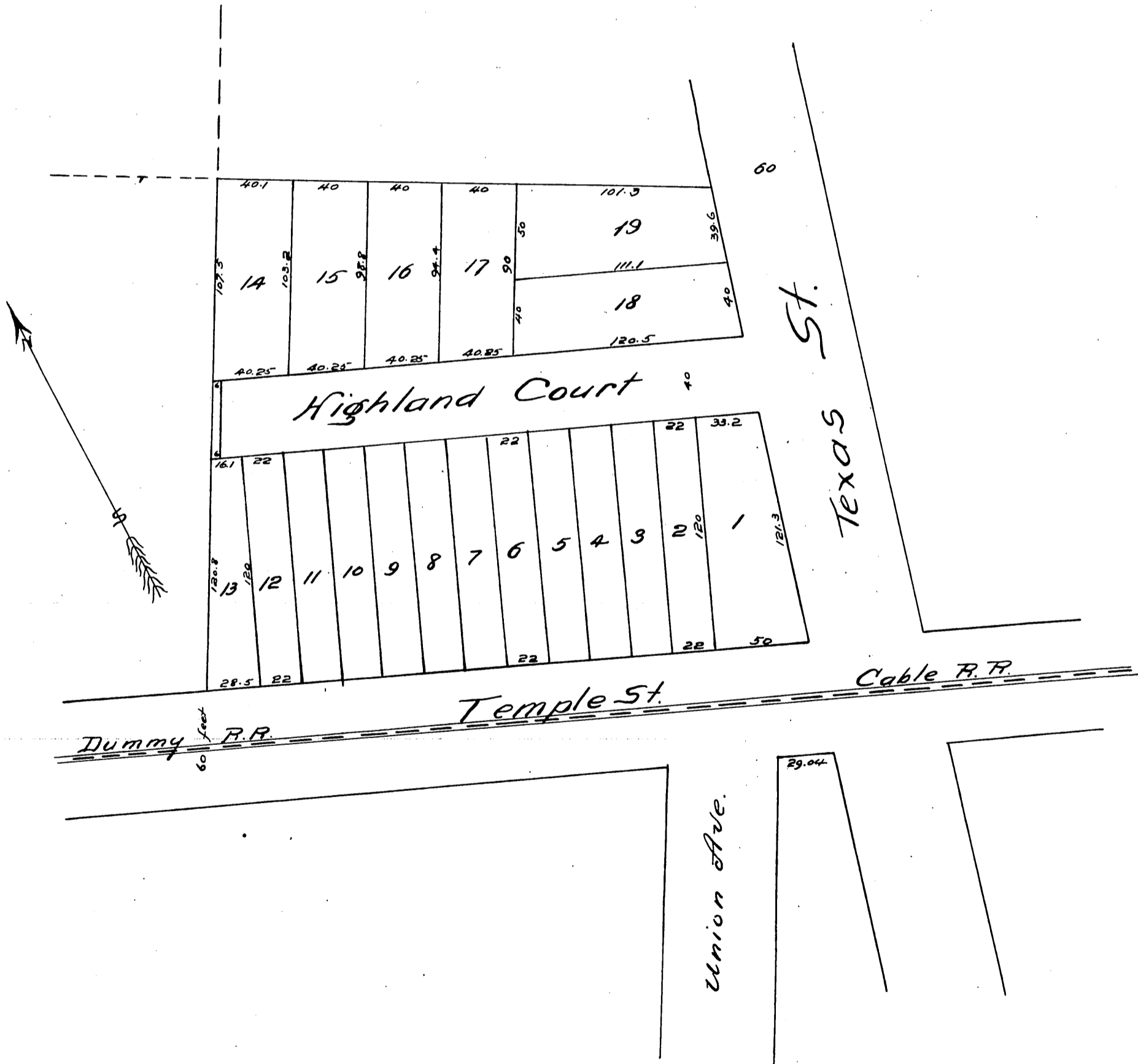


1304

Map
of the
Temple & Texas Tract
a Subdivision of Lot 2 in Lot 3, Block 39 (Hancock Survey)
Highland Tract,
(Recorded in Book 5 p 119 Miss. Records)
Los Angeles, Cal.
H. J. Olverson Sur. December 1886
Scale 60ft per inch.



A full true and correct copy of the original recorded
January 22nd 1887 at 1:10 P.M. at request of J. H. Blanchard
Frank A. Gibson. County Recorder.
By Geo. Bugbee. Deputy.