

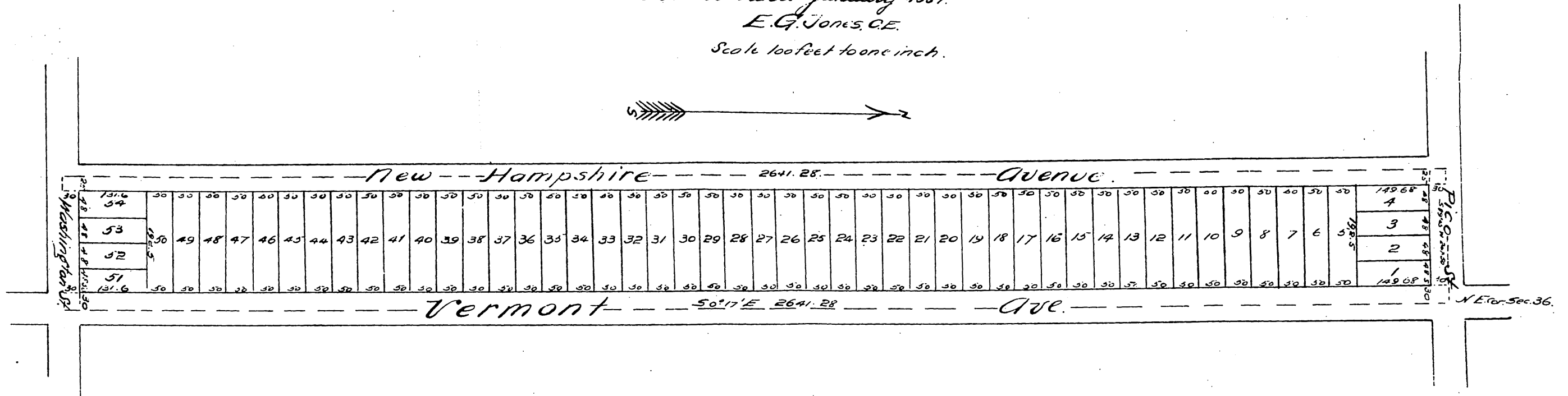
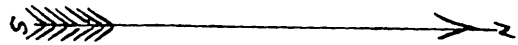
Map OF THE Buhler Tract

Being the Subdivision of a portion of Sec. 36, T. 1, R. 14 N. S. B. 77.

As subdivided January 1887.

E. G. Jones, C.E.

Scale 100 feet to one inch.



A full true and correct copy of the original (reduced to scale of 200 feet to 1 inch) recorded January 22nd 1887 at 2⁵³ P.M. at request of Los Angeles Land Bureau.

Frank A. Gibson, County Recorder.

By Geo. Bugbee

D. Deputy

