

Map of

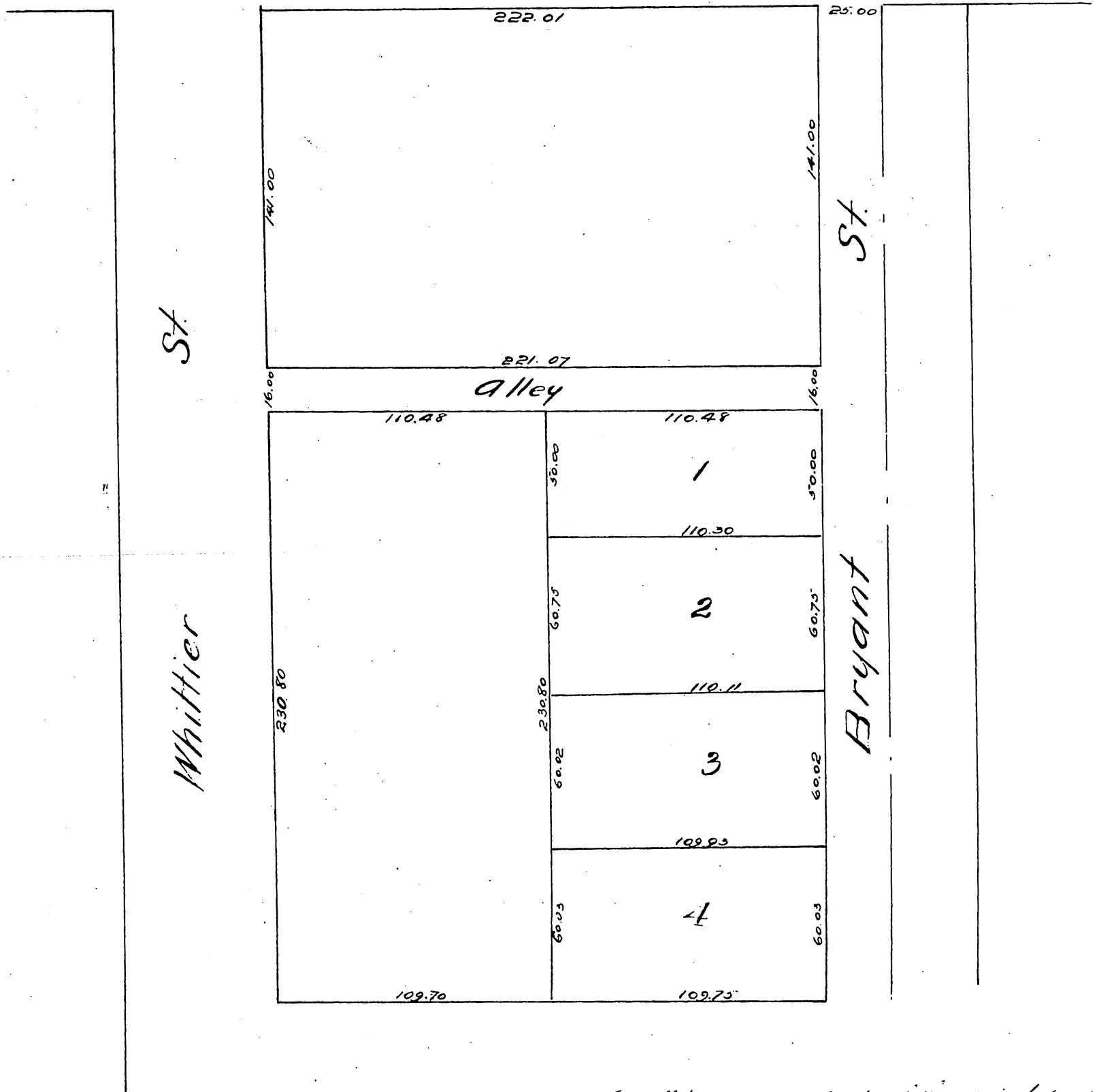
J. O'Neil's Subdivision on Bryant Street

LOS ANGELES, CAL.

Being a portion of Lot 7, Block 37, Hancock's Survey.
Surveyed Jan 1887 by E.T. Wright.

Scale 50 ft to one inch.

Seventh St.



A true and correct copy of the original recorded
 January 22nd 1887 of 3 min. part 37th M at request of J. O'Neil.
 Frank U. Gilmore County Recorder
 by Geo. R. Bee Deputy.