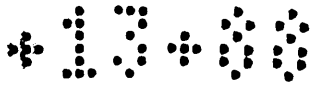


Plat of
 Of Mills and Wicks Extension of Second
 Stand adjoining subdivision in the City of Los
 Angeles California from Lot 1 to 144 inclusive
 and Lots 160 to 236, inclusive subdivided at the
 request of M. L. Wicks and Howard W. Mills in
 April and May 1886, under the direction of Geo.
 C. Knox; and additional subdivisions comprising
 lots 145 to 157 inclusive, and lots 237, 237 $\frac{1}{2}$ -238, 238 $\frac{1}{2}$, 239
 240, 241, 242 and 243, made at the request of the same
 persons and under the same direction in Jan 1887
 n.B. There are no lots numbered 158 and 159 in said subdivisions

Scale 100 ft to one inch.

Note.

Fences ————
 Willow Hedge ————
 There is a strip 3.00 feet in width between
 Alley East of lots 222 and 223 and the North
 boundary of the Keller Tract.

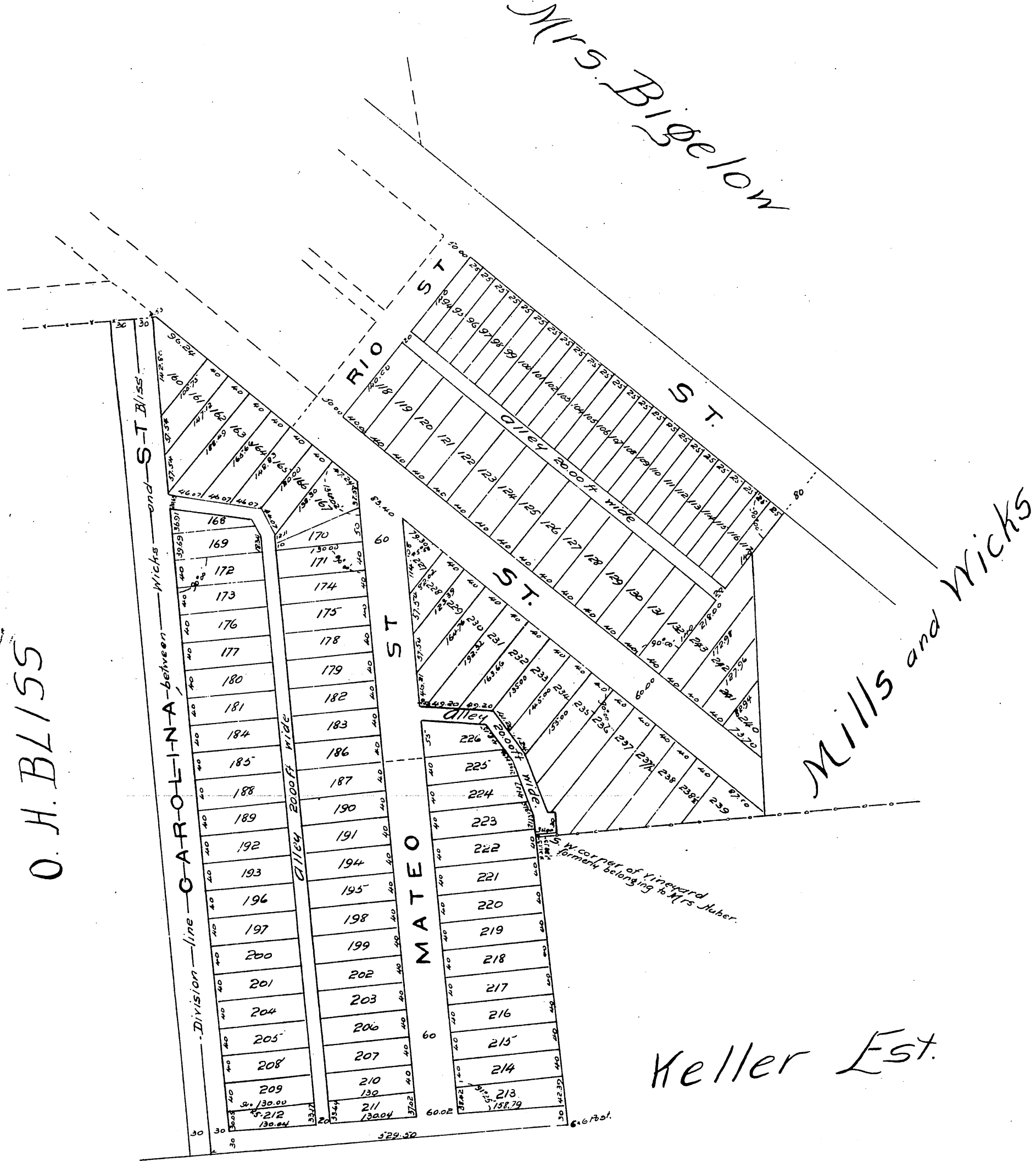


Mrs. Bigelow

O. H. BLISS

Mills and Wicks

Keller Est.



A full, true and correct copy of the original
 (reduced to the scale of 150 feet to one inch)
 recorded January 24, 1887 at 50 min. past 8
 A. M. at request of M. L. Wick's

Frank O. Gilson County Recorder
 by Geo. Bugher Deputy.