

Mrs. C.B. JONE'S SUBDIVN.

South 1/2 of West 1/2 of Lot 15

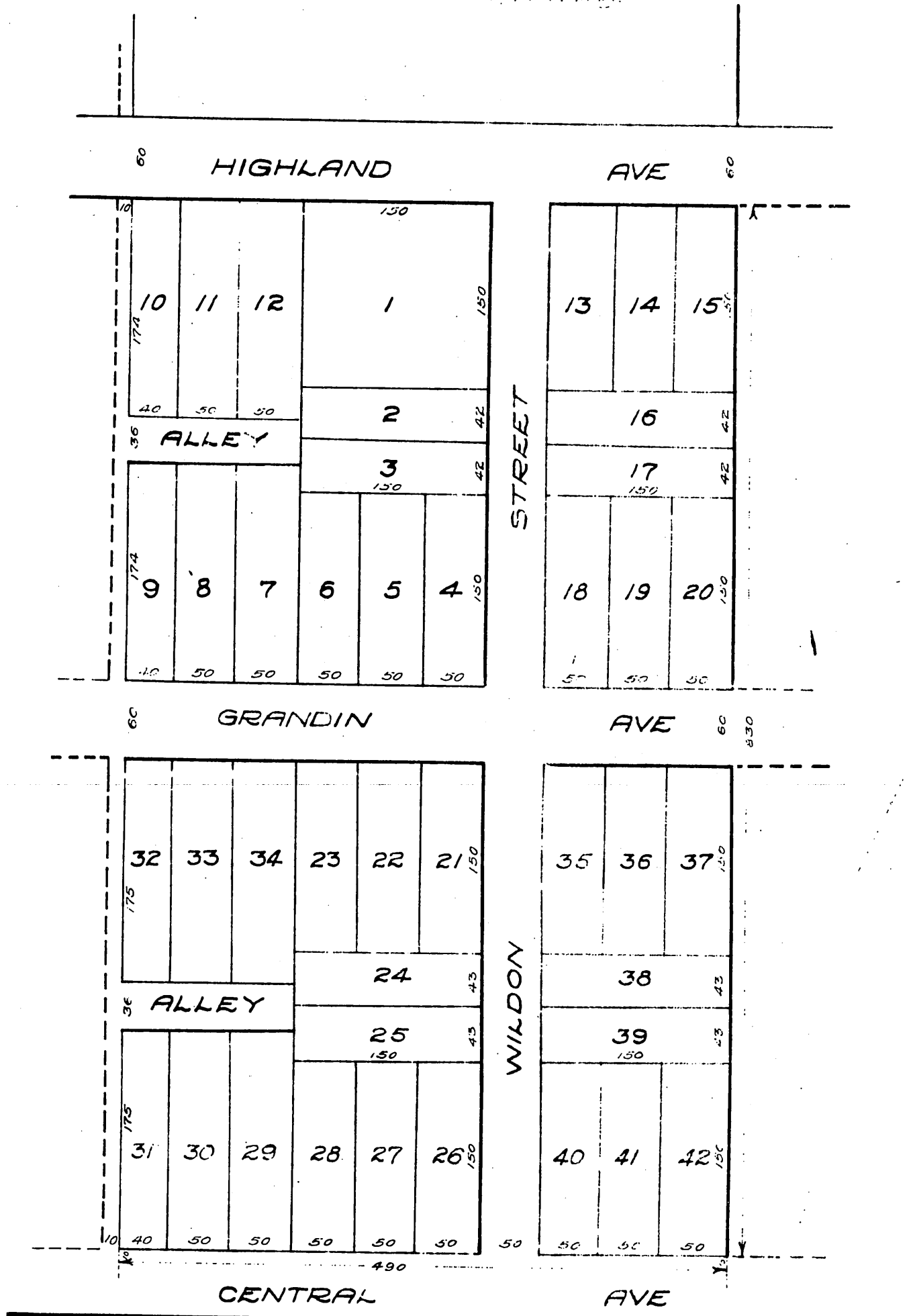
SIERRA MADRE TRACT

Sierra Madre

Cal.

Simpson & Archer, Architects & Civil Engrs., Pasadena, Cal.

Scale 100 ft. = 1 in.



Note: Stakes on Central Ave. 10 ft. North of line.

A full true and correct copy of the original recorded
 January 22nd 1887 at 10.30 A.M. at request of Mrs. C.B. Jones.
 Frank A. Gibson, County Recorder
 By Geo. Baybee, Deputy