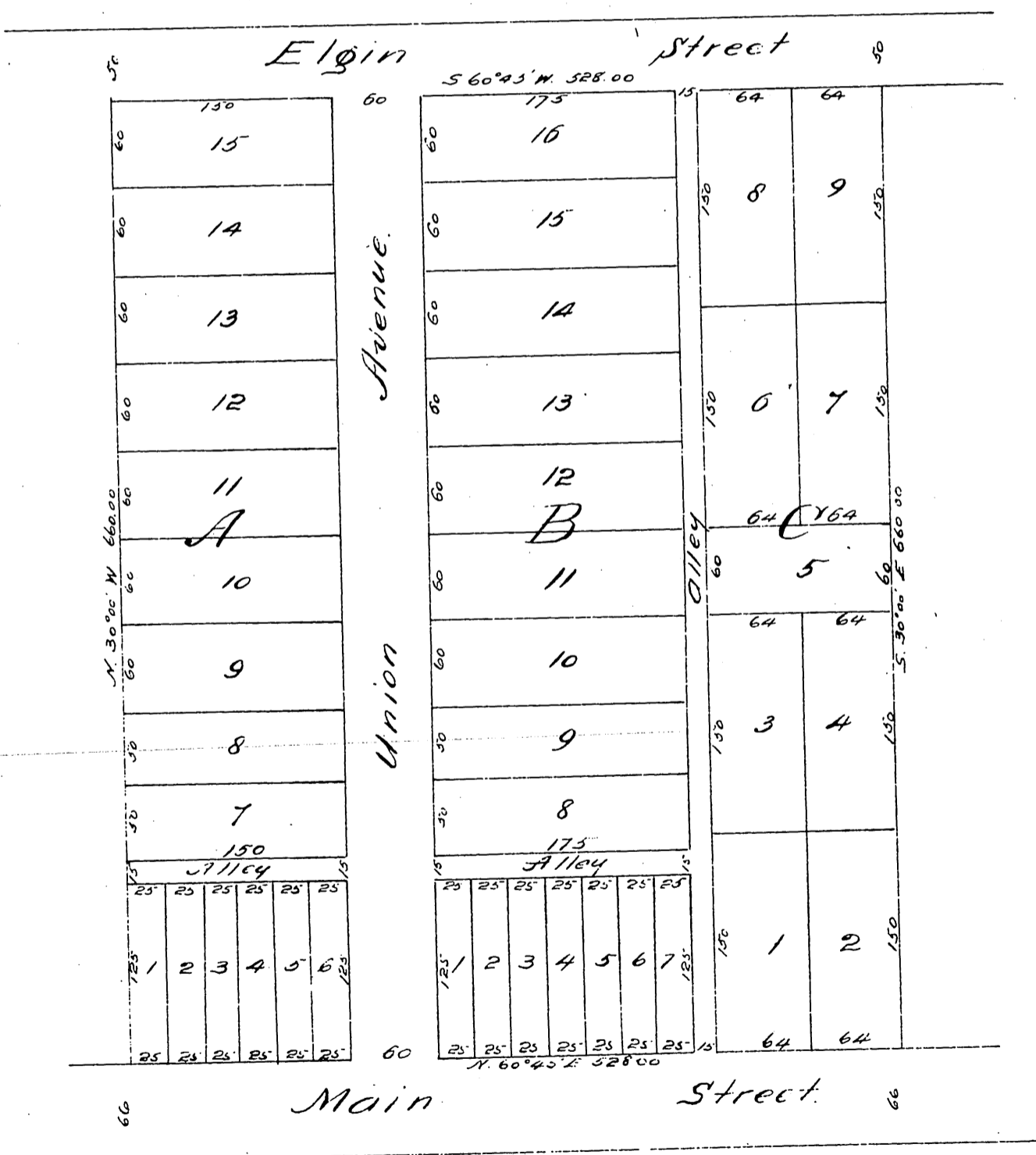


1392

W.E. Ferguson's Subdivision
 of
 Lots 6, 7, 10 & 11 of G.B. Adams Subdivision
 of
 Lots 4, 5 & 6 of P. 8, & Lots 4, 5 & 6 of P. 9.
 Alhambra Odd Tract.
 Jan'y 17, 1887
 Scale 100 ft = 1 in True Courses.
 W.E. Ferguson, C.E.



A full, true and correct copy of the original recorded
 January 25th 1887 at 2³⁵ P.M. at request of W.E. Ferguson.
 Frank A. Gibson County Recorder.
 by Geo. Younglee Deputy.