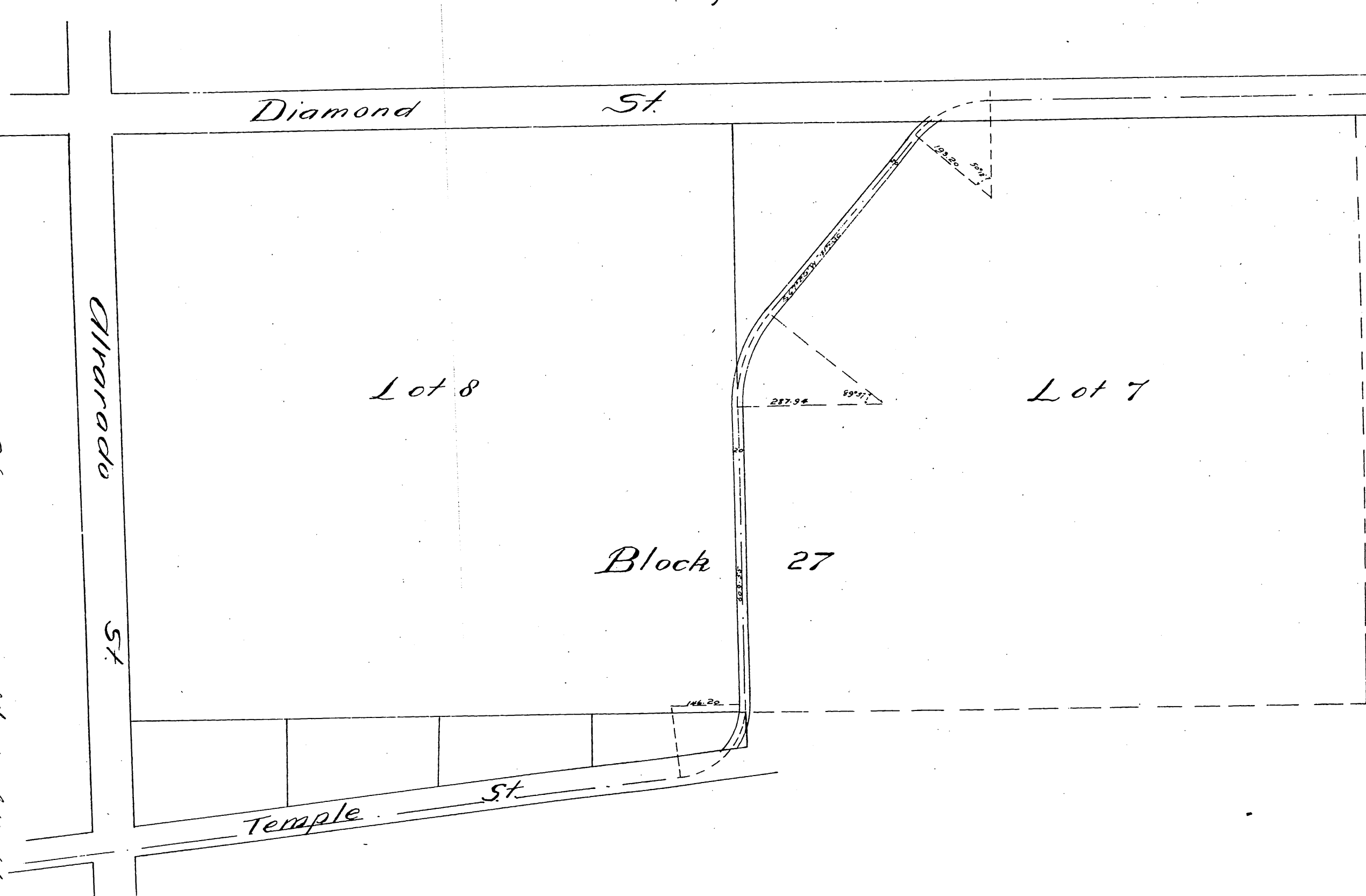


Plat showing Railway line from the
 Northern line of Block 27 Hancock's Survey, through
 Lots 7 & 8 to Diamond St
 Surveyed Jan 1887 by Geo. E. Pillsbury, C.E.
 Scale 200ft to one inch.



A full true and correct copy of the original recorded
 January 26th 1887 at 10 20 A.M. at request of Geo. W. Searles
 Sheriff of Alameda County
 Geo. E. Pillsbury
 Deputy