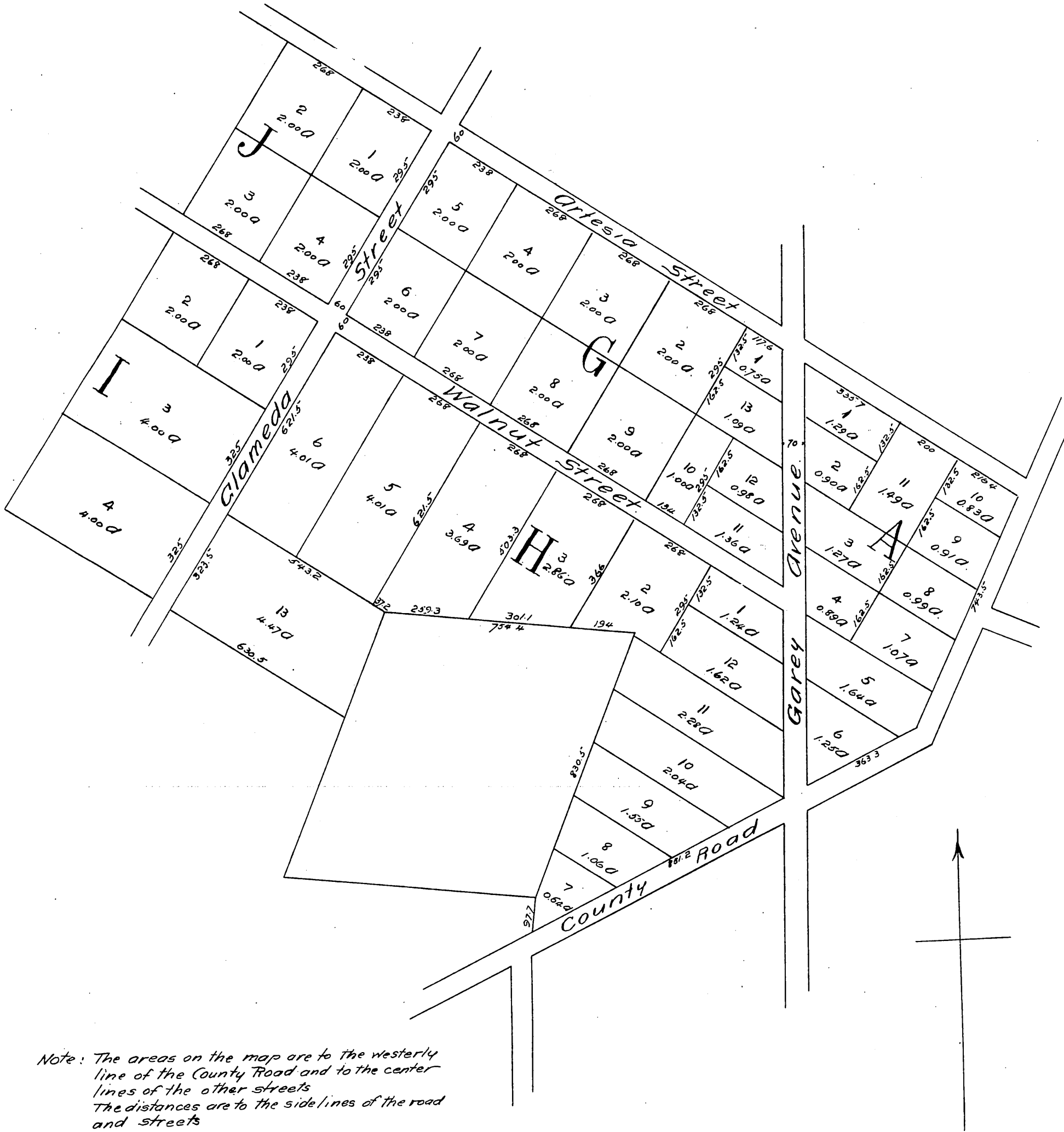


1395

Map of a part of the Palomares Tract as subdivided by the Pomona Land & Water Co Pomona Los Angeles Co. Cal.

Scale 200 feet to 1 inch.
Jas. T. Taylor, Surveyor. January 1887.



Note: The areas on the map are to the westerly line of the County Road and to the center lines of the other streets
The distances are to the sidelines of the road and streets

A full, true and correct copy of the original
(reduced to the scale of 300 feet to one inch)
recorded January 27, 1887 at 5th min past 10 A.M.
at request of Pomona Land & Water Co.
Frank A. Gibson, County Recorder.
By Geo Bugbee, Deputy.