

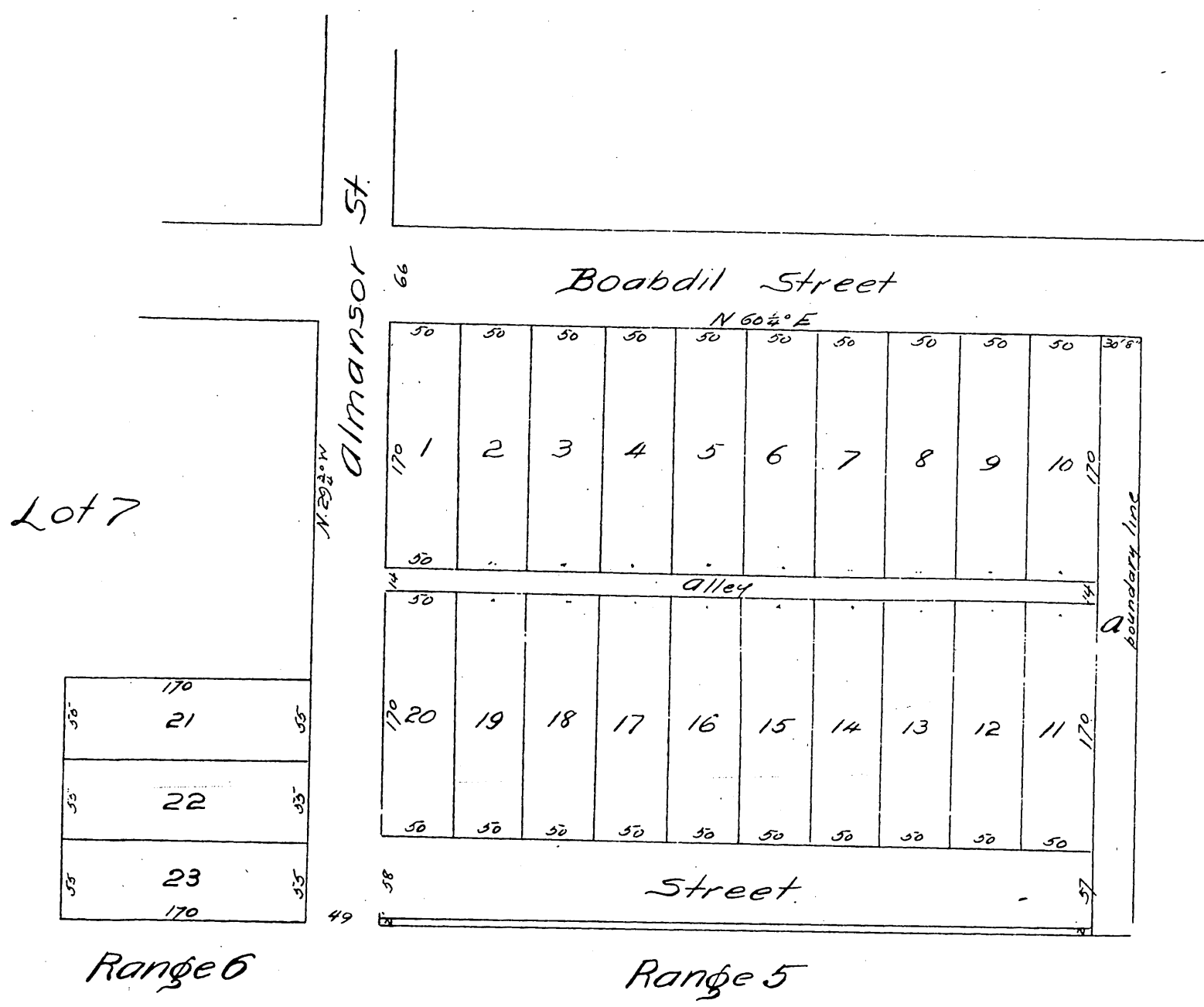
4398

Kelloff Tract

Alhambra California

Being T.D. Kelloff's Subdivision of Lot 7 Range 5 and part of Lot 7 Range 6 of the Alhambra Tract, as recorded in book 3 page 266 Miss Records. Scale 100 feet to 1 inch

Surveyed by Gervaise Purcell C E



A full, true and correct copy of the original recorded January 27 1887 at 26 min. past 12 M. at request of T.D. Kelloff

Frank A. Gibson. County Recorder.
By Geo. Bugbee. Deputy.