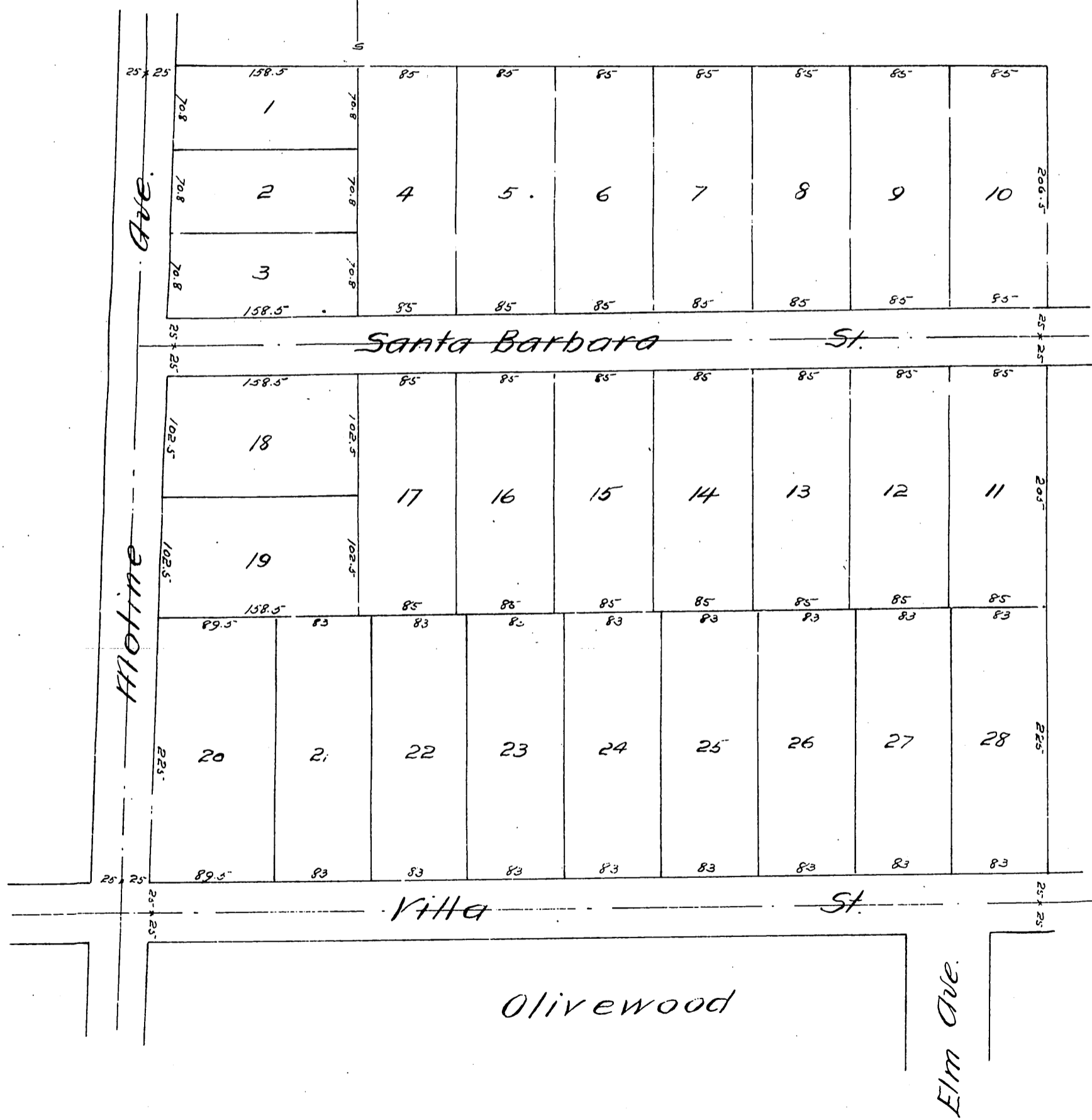
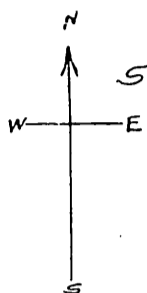


1399

# Map OF Lacey's Addition TO Olive wood

Being a part of a tract of land conveyed  
by Alex B. Grogan to Nancy E. Lacey on Feb 22<sup>nd</sup>  
1881 by deed recorded in Book 77 deeds page 413  
Los Angeles County Records.  
Los Angeles Co. Calif.  
Surveyed Jan. 1887 by J. M. Willard C.E.  
Scale 60 ft to 1 in.



a full true and correct copy of the original  
(reduced to the scale of 100 feet to one inch)  
recorded January 28, 1887 at 10 O. M. at re-  
quest of F. E. Lacey  
Frank O. Gibson County Recorder.  
By Geo. Bugbee Deputy.