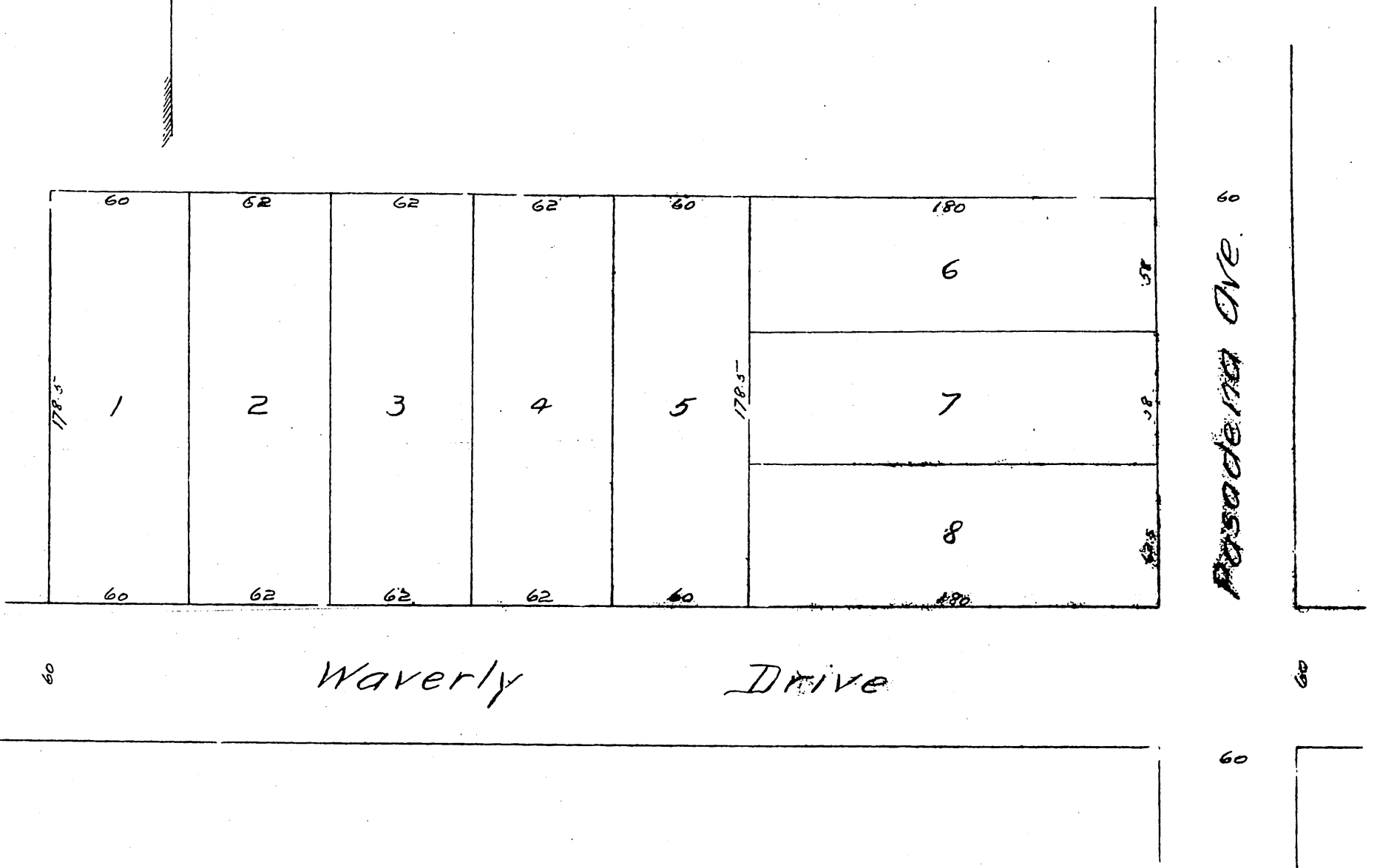
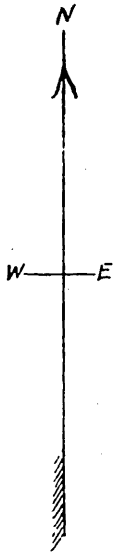


43100

Map
 OF THE
 Hartwell^{and} Loughery Subdivision
 Being the East 486 ft. of Lot 3 Division 0 of the
 James Smith Tract Pasadena Los Angeles Co. Calif.

Surveyed 1886 by J. M. Willard C.
 Scale: 1" = 100 ft.



A full, true and correct copy of the original
 recorded January 28, 1887 at 55 min. past 12 M
 at request of W. B. Loughery.
 Frank A. Gibson. Co. Recorder.
 Roy Geo. Bugbee. Deputy.