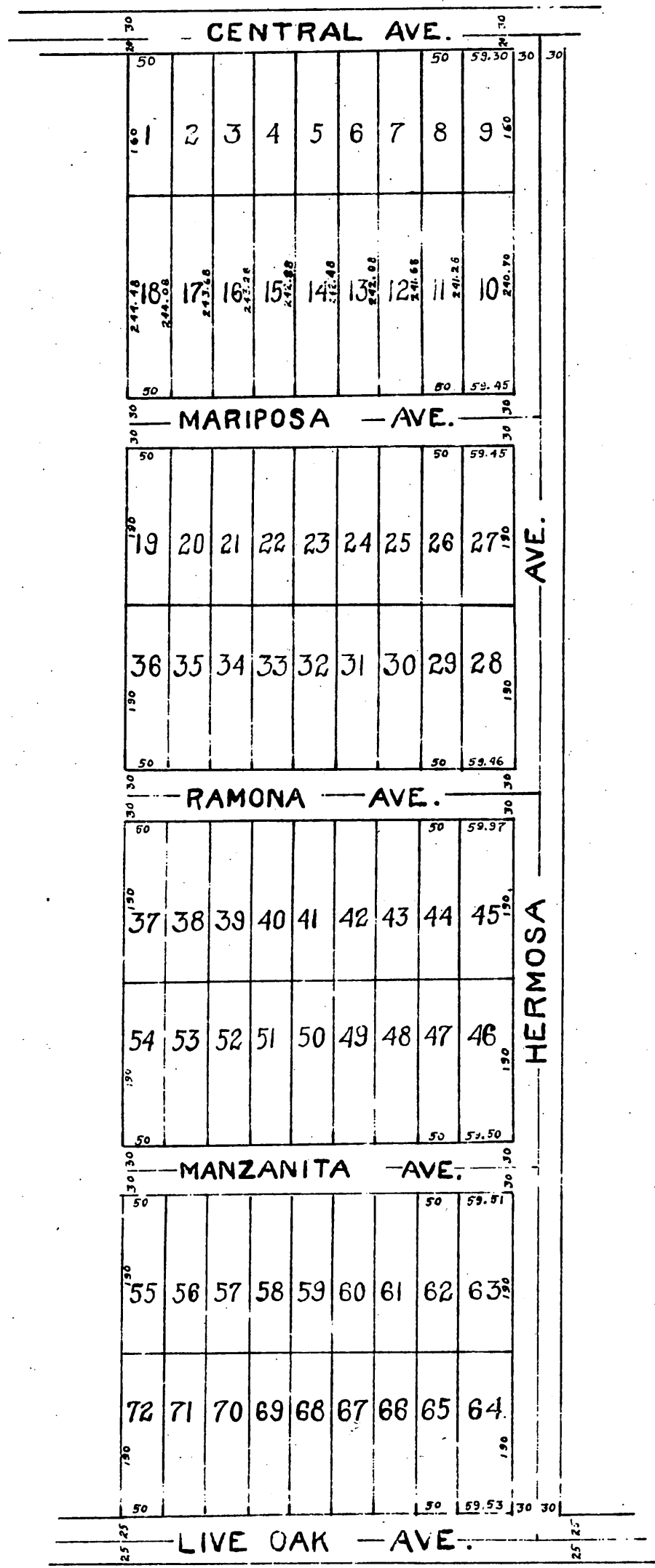


MAP OF
HART'S SUBDIVISION
 OF the West half of Lot 4 Sierra Madre Tract
 Sierra Madre L.A. Co. Calif
 Surveyed Jan. 1887 by J.M. Willard C.E.

Scale 80ft. to inch



Recorded Jan. 31, 1887 at 11:59 A.M.
 request of J. Hart