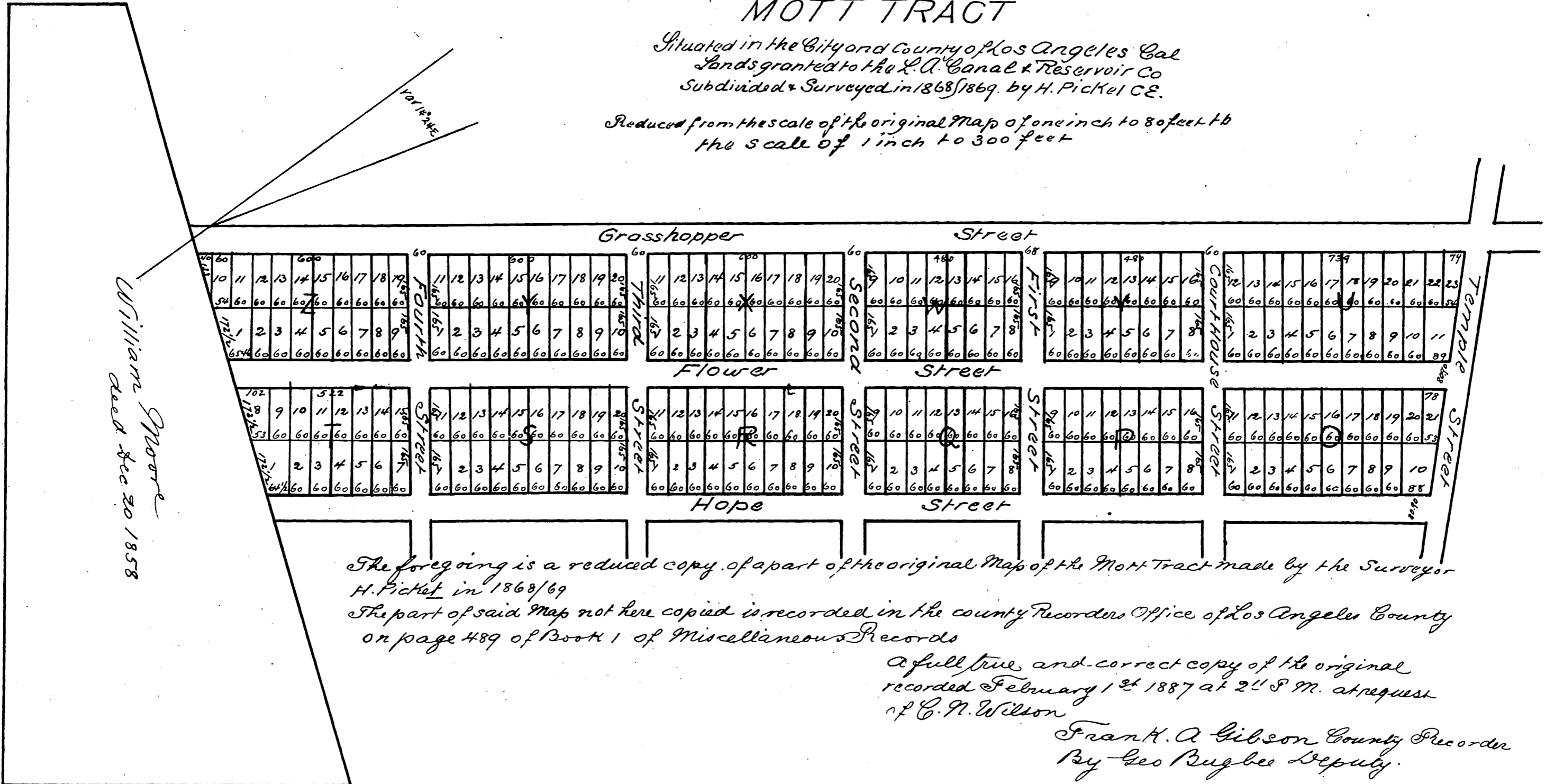


Copy of a part of the  
**MAP**  
of the  
**MOTT TRACT**

Situated in the City and County of Los Angeles Cal  
Lands granted to the L.A. Canal & Reservoir Co  
Subdivided & Surveyed in 1868/1869 by H. Pickett CE.

Reduced from the scale of the original map of one inch to 80 feet to  
the scale of 1 inch to 300 feet



The foregoing is a reduced copy of a part of the original Map of the Mott Tract made by the Surveyor  
H. Pickett in 1868/69

The part of said map not here copied is recorded in the county Recorder's Office of Los Angeles County  
on page 489 of Book 1 of Miscellaneous Records

A full true and correct copy of the original  
recorded February 1<sup>st</sup> 1887 at 2<sup>11</sup> P.M. at request  
of C. N. Wilson

Frank A. Gibson County Recorder  
By Geo Bugbee Deputy.

William Moore  
deed Dec 30 1858

